

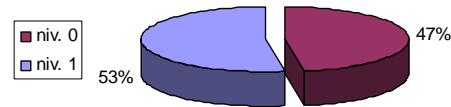
CENTRALIZER OF THE ANSWERS PROVIDED AT THE LEVEL OF THE ACTIVE TRAVEL NETWORK URBAN MOBILITY QUESTIONNAIRE IN SEBES MUNICIPALITY

The ATN survey was based on BYPAD questionnaires adapted and extended so that to include additional issues and refer as well to walking. The possible answers provided in the Active Travel audit questionnaire (2011) covered a large choice of options presented in the ascending order of the level of involvement of the local authorities concerning sustainable urban mobility. Thus, the questions from x.1 series were encoded from the level 0 (no implication) until the 4th level (the highest level of implication). The answer options for the questions x.2 regarding the need of action have been presented and quoted from the minimum (Level 0: minimal need) to maximum (Level 2: high need). For both of the series, the non-answers have been noted with NR.

Module A: User needs

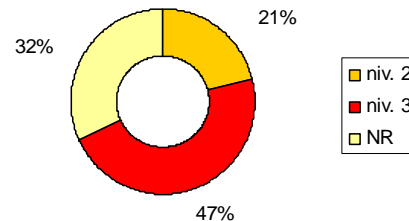
1.1. How does the city government receive information about the needs of cyclists / pedestrians?

| Question 1.1. | | |
|---------------|----------------|------|
| | No. of answers | % |
| level 0 | 9 | 47.4 |
| level 1 | 10 | 52.6 |
| Total | 19 | 100 |



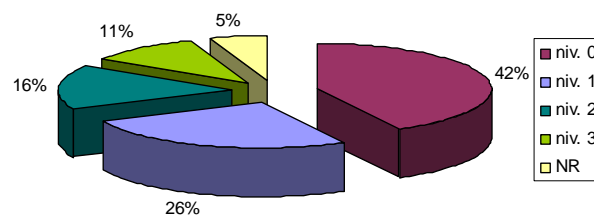
1.2. Estimate the need of action in this field.

| Question 1.2. | | |
|---------------|----------------|------|
| | No. of answers | % |
| level 2 | 4 | 21.1 |
| level 3 | 9 | 47.4 |
| NR | 6 | 31.6 |
| Total | 19 | 100 |



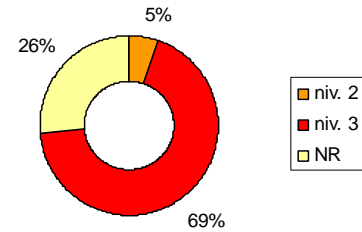
2.1. What are the possibilities for bikers / pedestrians to actively participate in the decision making process of transport policy?

| Question 2.1 | | |
|--------------|----------------|------|
| | No. of answers | % |
| level 0 | 8 | 42.1 |
| level 1 | 5 | 26.3 |
| level 2 | 3 | 15.8 |
| level 3 | 2 | 10.5 |
| NR | 1 | 5.3 |
| Total | 19 | 100 |



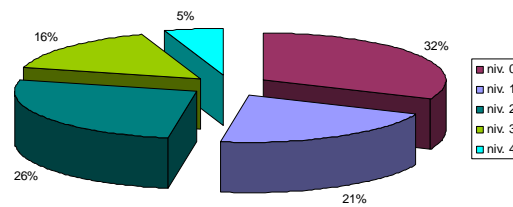
2.2. Estimate the need of action in this field.

| Question 2.2 | | |
|--------------|----------------|-------|
| | No. of answers | % |
| level 2 | 1 | 5.3 |
| level 3 | 13 | 68.4 |
| NR | 5 | 26.3 |
| Total | 19 | 100.0 |



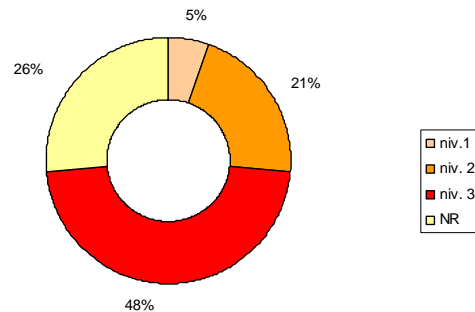
3.1. What is the status of active travel in daily life?

| Question 3.1 | | |
|--------------|----------------|-------|
| | No. of answers | % |
| level 0 | 6 | 31.6 |
| level 1 | 4 | 21.1 |
| level 2 | 5 | 26.3 |
| level 3 | 3 | 15.8 |
| level 4 | 1 | 5.3 |
| Total | 19 | 100.0 |



3.2. Estimate the need of action in this field.

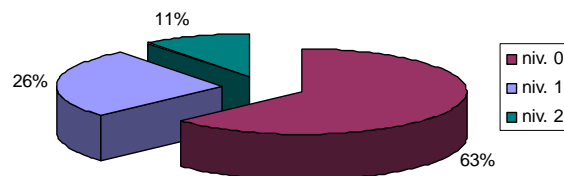
| Question 3.2 | | |
|--------------|----------------|-------|
| | No. of answers | % |
| level 1 | 1 | 5.3 |
| level 2 | 4 | 21.1 |
| level 3 | 9 | 47.4 |
| NR | 5 | 26.3 |
| Total | 19 | 100.0 |



Module B: Policies and Coordination

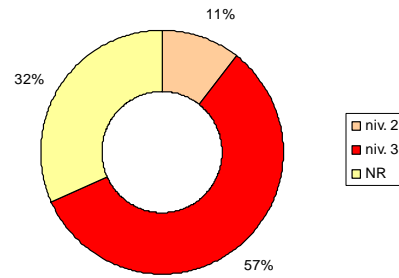
4.1. How is active travel anchored in transport policies?

| Question 4.1 | | |
|--------------|----------------|-------|
| | No. of answers | % |
| level 0 | 12 | 63.2 |
| level 1 | 5 | 26.3 |
| level 2 | 2 | 10.5 |
| Total | 19 | 100.0 |



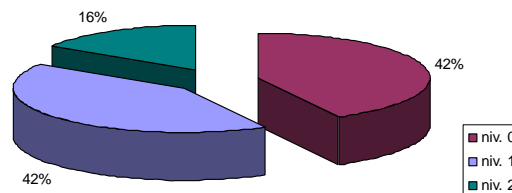
4.2. Estimate the need of action in this field.

| Question 4.2 | | |
|--------------|----------------|-------|
| | No. of answers | % |
| level 2 | 2 | 10.5 |
| level 3 | 11 | 57.9 |
| NR | 6 | 31.6 |
| Total | 19 | 100.0 |



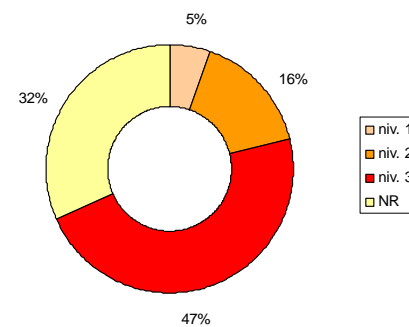
5.1. How intensive is the co-operation with external organisations (neighbouring municipalities, province, etc.)?

| Question 5.1 | | |
|--------------|----------------|-------|
| | No. of answers | % |
| level 0 | 8 | 42.1 |
| level 1 | 8 | 42.1 |
| level 2 | 3 | 15.8 |
| Total | 19 | 100.0 |



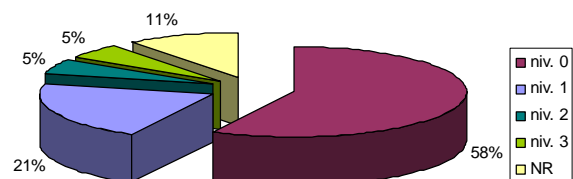
5.2. Estimate the need of action in this field.

| Question 5.2 | | |
|--------------|----------------|-------|
| | No. of answers | % |
| level 1 | 1 | 5.3 |
| level 2 | 3 | 15.8 |
| level 3 | 9 | 47.4 |
| NR | 6 | 31.6 |
| Total | 19 | 100.0 |



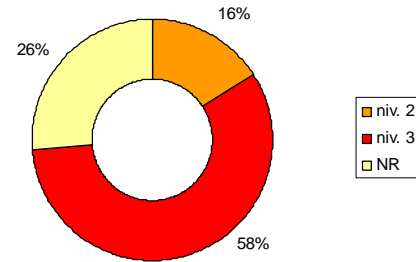
6.1. To what extent does the city development policy support active travel?

| Question 6.1 | | |
|--------------|----------------|-------|
| | No. of answers | % |
| level 0 | 11 | 57.9 |
| level 1 | 4 | 21.1 |
| level 2 | 1 | 5.3 |
| level 3 | 1 | 5.3 |
| NR | 2 | 10.5 |
| Total | 19 | 100.0 |



6.2. Estimate the need of action in this field.

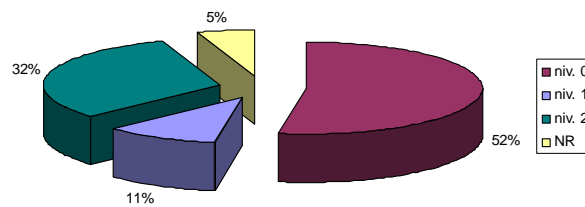
| Question 6.2 | | |
|--------------|----------------|-------|
| | No. of answers | % |
| level 2 | 3 | 15.8 |
| level 3 | 11 | 57.9 |
| NR | 5 | 26.3 |
| Total | 19 | 100.0 |



Module C: Means & Personnel

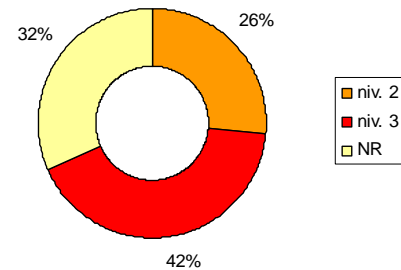
7.1. How is the funding of active travel policies guaranteed?

| Question 7.1 | | |
|--------------|----------------|-------|
| | No. of answers | % |
| level 0 | 10 | 52.6 |
| level 1 | 2 | 10.5 |
| level 2 | 6 | 31.6 |
| NR | 1 | 5.3 |
| Total | 19 | 100.0 |



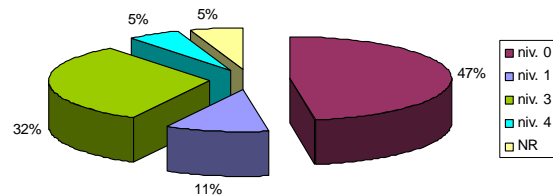
7.2. Estimate the need of action in this field.

| Question 7.2 | | |
|--------------|----------------|-------|
| | No. of answers | % |
| level 2 | 5 | 26.3 |
| level 3 | 8 | 42.1 |
| NR | 6 | 31.6 |
| Total | 19 | 100.0 |



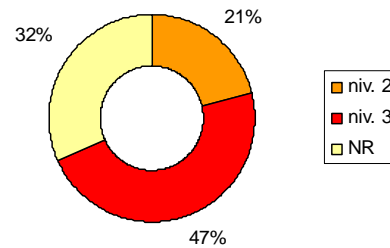
8.1. Who is responsible for the implementation of active travel policies?

| Question 8.1 | | |
|--------------|----------------|-------|
| | No. of answers | % |
| level 0 | 9 | 47.4 |
| level 1 | 2 | 10.5 |
| level 3 | 6 | 31.6 |
| level 4 | 1 | 5.3 |
| NR | 1 | 5.3 |
| Total | 19 | 100.0 |



8.2. Estimate the need of action in this field.

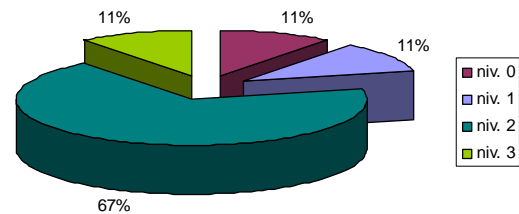
| Question 8.2 | | |
|--------------|----------------|-------|
| | No. of answers | % |
| level 2 | 4 | 21.1 |
| level 3 | 9 | 47.4 |
| NR | 6 | 31.6 |
| Total | 19 | 100.0 |



Modulul D: Infrastructure & Safety

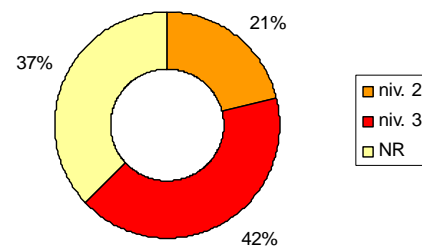
9.1. Quality of the pedestrian network in city/town

| Question 9.1 | | |
|--------------|----------------|-------|
| | No. of answers | % |
| level 0 | 2 | 10.5 |
| level 1 | 2 | 10.5 |
| level 2 | 13 | 68.4 |
| level 3 | 2 | 10.5 |
| Total | 19 | 100.0 |



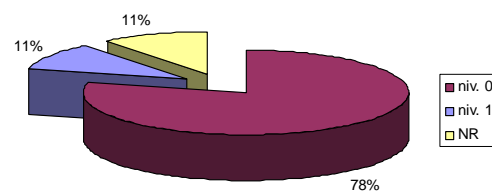
9.2. Estimate the need of action in this field.

| Question 9.2 | | |
|--------------|----------------|-------|
| | No. of answers | % |
| level 2 | 4 | 21.1 |
| level 3 | 8 | 42.1 |
| NR | 7 | 36.8 |
| Total | 19 | 100.0 |



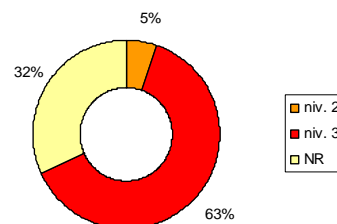
10.1. Quality of the bicycle traffic network in city/town

| Question 10.1 | | |
|---------------|----------------|-------|
| | No. of answers | % |
| level 0 | 15 | 78.9 |
| level 1 | 2 | 10.5 |
| NR | 2 | 10.5 |
| Total | 19 | 100.0 |



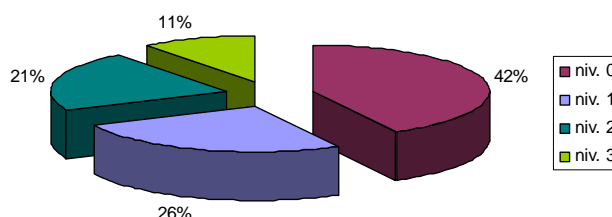
10.2. Estimate the need of action in this field.

| Question 10.2 | | |
|---------------|----------------|-------|
| | No. of answers | % |
| level 2 | 1 | 5.3 |
| level 3 | 12 | 63.2 |
| NR | 6 | 31.6 |
| Total | 19 | 100.0 |



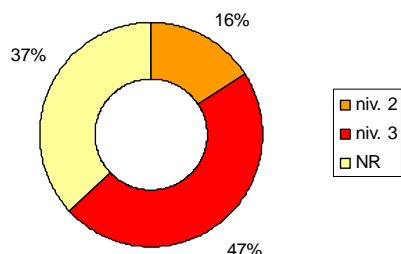
11.1. How is the maintenance of the bicycle and pedestrian infrastructure organized?

| Question 11.1 | | |
|---------------|----------------|-------|
| | No. of answers | % |
| level 0 | 8 | 42.1 |
| level 1 | 5 | 26.3 |
| level 2 | 4 | 21.1 |
| level 3 | 2 | 10.5 |
| Total | 19 | 100.0 |



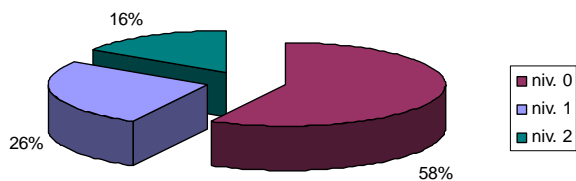
11.2. Estimate the need of action in this field.

| Question 11.2 | | |
|---------------|----------------|-------|
| | No. of answers | % |
| level 2 | 3 | 15.8 |
| level 3 | 9 | 47.4 |
| NR | 7 | 36.8 |
| Total | 19 | 100.0 |



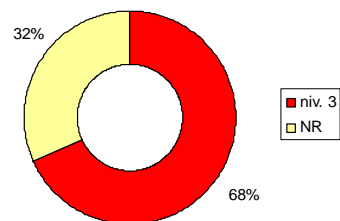
12.1. What is done to increase the safety of walking / cycling?

| Question 12.1 | | |
|---------------|----------------|-------|
| | No. of answers | % |
| level 0 | 11 | 57.9 |
| level 1 | 5 | 26.3 |
| level 2 | 3 | 15.8 |
| Total | 19 | 100.0 |



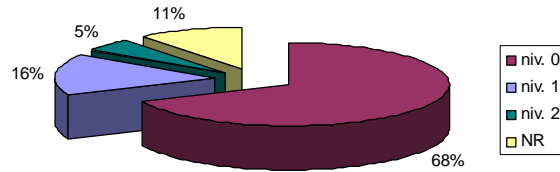
12.2. Estimate the need of action in this field.

| Question 12.2 | | |
|---------------|----------------|-------|
| | No. of answers | % |
| level 3 | 13 | 68.4 |
| NR | 6 | 31.6 |
| Total | 19 | 100.0 |



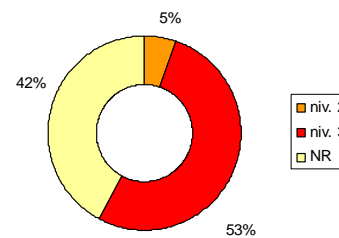
13.1. What is done to park bicycles and decrease theft?

| Question 13.1 | | |
|---------------|----------------|-------|
| | No. of answers | % |
| level 0 | 13 | 68.4 |
| level 1 | 3 | 15.8 |
| level 2 | 1 | 5.3 |
| NR | 2 | 10.5 |
| Total | 19 | 100.0 |



13.2. Estimate the need of action in this field.

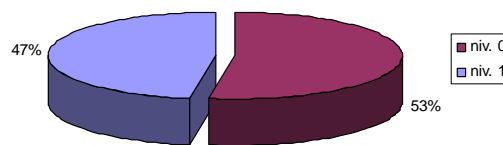
| Question 13.2 | | |
|---------------|----------------|-------|
| | No. of answers | % |
| level 2 | 1 | 5.3 |
| level 3 | 10 | 52.6 |
| NR | 8 | 42.1 |
| Total | 19 | 100.0 |



Module E: Information & Education

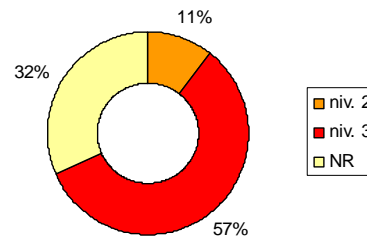
14.1. How well is the public informed concerning active travel policy and activities?

| Question 14.1 | | |
|---------------|----------------|-------|
| | No. of answers | % |
| level 0 | 10 | 52.6 |
| level 1 | 9 | 47.4 |
| Total | 19 | 100.0 |



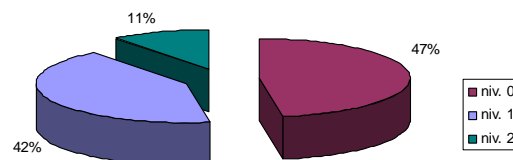
14.2. Estimate the need of action in this field.

| Question 14.2 | | |
|---------------|----------------|-------|
| | No. of answers | % |
| level 2 | 2 | 10.5 |
| level 3 | 11 | 57.9 |
| NR | 6 | 31.6 |
| Total | 19 | 100.0 |



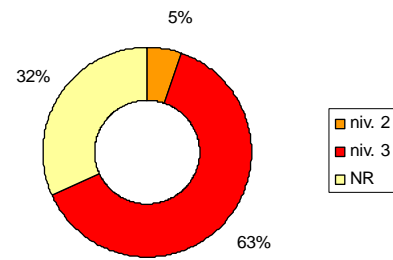
15.1. How is the quality of signposting?

| Question 15.1 | | |
|---------------|----------------|-------|
| | No. of answers | % |
| level 0 | 9 | 47.4 |
| level 1 | 8 | 42.1 |
| level 2 | 2 | 10.5 |
| Total | 19 | 100.0 |



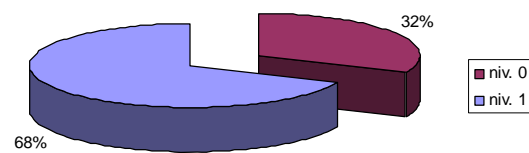
15.2. Estimate the need of action in this field.

| Question 15.2 | | |
|---------------|----------------|-------|
| | No. of answers | % |
| level 2 | 1 | 5.3 |
| level 3 | 12 | 63.2 |
| NR | 6 | 31.6 |
| Total | 19 | 100.0 |



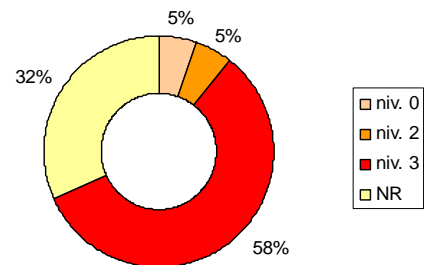
16.1. What is done in the fields of traffic education and training?

| Question 16.1 | | |
|---------------|----------------|-------|
| | No. of answers | % |
| level 0 | 6 | 31.6 |
| level 1 | 13 | 68.4 |
| Total | 19 | 100.0 |



16.2. Estimate the need of action in this field.

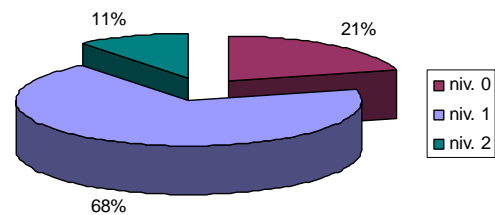
| Question 16.2 | | |
|---------------|----------------|-------|
| | No. of answers | % |
| level 0 | 1 | 5.3 |
| level 2 | 1 | 5.3 |
| level 3 | 11 | 57.9 |
| NR | 6 | 31.6 |
| Total | 19 | 100.0 |



Module F: Promotion & Partnerships

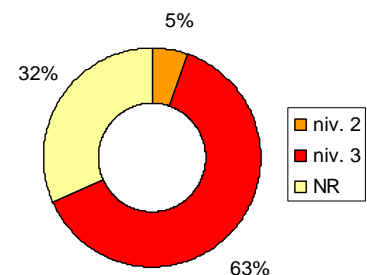
17.1. What initiatives are taken to encourage cycling / walking of various age groups?

| Question 17.1 | | |
|---------------|----------------|-------|
| | No. of answers | % |
| level 0 | 4 | 21.1 |
| level 1 | 13 | 68.4 |
| level 2 | 2 | 10.5 |
| Total | 19 | 100.0 |



17.2. Estimate the need of action in this field.

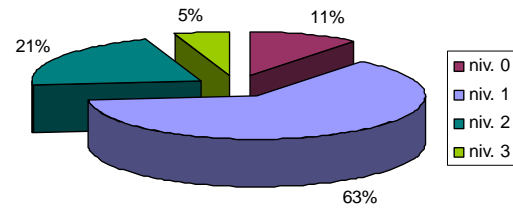
| Question 17.2 | | |
|---------------|----------------|-------|
| | No. of answers | % |
| level 2 | 1 | 5.3 |
| level 3 | 12 | 63.2 |
| NR | 6 | 31.6 |
| Total | 19 | 100.0 |



Modulul G: Complementary Actions

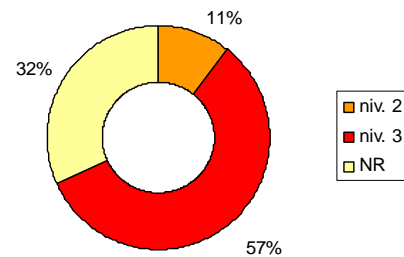
18.1. What is done to tame motorised traffic?

| Question 18.1 | | |
|---------------|----------------|-------|
| | No. of answers | % |
| level 0 | 2 | 10.5 |
| level 1 | 12 | 63.2 |
| level 2 | 4 | 21.1 |
| level 3 | 1 | 5.3 |
| Total | 19 | 100.0 |



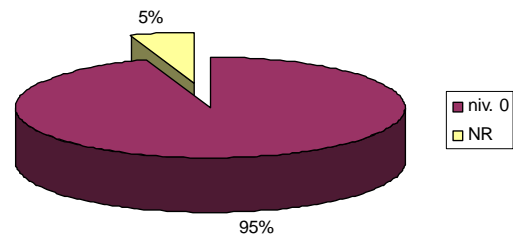
18.2. Estimate the need of action in this field.

| Question 18.2 | | |
|---------------|----------------|-------|
| | No. of answers | % |
| level 2 | 2 | 10.5 |
| level 3 | 11 | 57.9 |
| NR | 6 | 31.6 |
| Total | 19 | 100.0 |



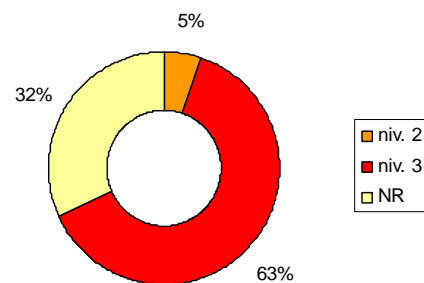
19.1. What is done to ensure an efficient use of public space regarding parking space management and access restrictions for motorized traffic?

| Question 19.1 | | |
|---------------|----------------|-------|
| | No. of answers | % |
| level 0 | 18 | 94.7 |
| NR | 1 | 5.3 |
| Total | 19 | 100.0 |



19.2. Estimate the need of action in this field.

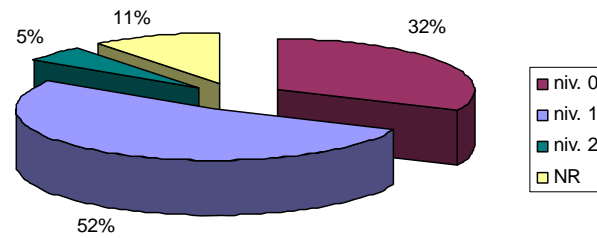
| Question 19.2 | | |
|---------------|----------------|-------|
| | No. of answers | % |
| level 2 | 1 | 5.3 |
| level 3 | 12 | 63.2 |
| NR | 6 | 31.6 |
| Total | 19 | 100.0 |



Modulul H: Evaluation and Effects

20.1. How are data for active travel collected and adopted?

| Question 20.1 | | |
|---------------|----------------|-------|
| | No. of answers | % |
| level 0 | 6 | 31.6 |
| level 1 | 10 | 52.6 |
| level 2 | 1 | 5.3 |
| NR | 2 | 10.5 |
| Total | 19 | 100.0 |



20.2. Estimate the need of action in this field.

| Question 20.2 | | |
|---------------|----------------|-------|
| | No. of answers | % |
| level 2 | 3 | 15.8 |
| level 3 | 10 | 52.6 |
| NR | 6 | 31.6 |
| Total | 19 | 100.0 |

