	URBACT II Type 1: Analytical case study	Template April 2010
---	--	-------------------------------

Using this template: As you fill in the various sections below, your text should replace the instructions (in italics) with the text of your case study. Please refer to the Guidance document on URBACT Case Studies which will help you to produce, validate and capitalise on this case study.

Name of Project: **Urban and sub-urban re-qualification plans through target actions to remove aerial high tension cables with emphasis on city outlook improvement to reinforce citizens' city- good-perception and use of public space**

Date: 2009 - 2011

Overview	<p><i>This project originated by the strong desire of continuing the already initiated reconciliation's process of local citizens with their city and the promotion of a healthier use of public space. This meant to stimulate the activation of specific urban re-qualification actions to (i) complete the removal of aerial electricity cables in the historical centre and (ii) to put the basis for the construction of healthy corridors connecting the historical centre of the city with its outskirts. The city we talk about here is Lecce, a medium-size pre-roman ancient city located in south-east Italy.</i></p> <p><i>As it is for many cities in Europe, several problems of different nature afflict the city such as environmental degradation (air pollution, traffic management, transport, etc.), unemployment, immigration, social integration, insufficient social services, building degradation etc.. Among these issues, the focus here was broadly on urban regeneration used as a tool for creating a better city environment and quality of life and facilitate the difficult relation between the preservation of the cultural heritage and the necessity of new territorial intervention that are often mandatory to guarantee modernity and efficiency.</i></p> <p><i>The historical centre of Lecce, is the vital and most vibrant zone of the city and where the majority of social aggregation and cultural activities take place. These are aspects very important for the quality of life of the Lecce citizens.</i></p> <p><i>Urban regeneration specifically is an important field of economical investment for the city, considering the relevance of its historical and cultural heritage which is at the basis of the tourism industry in the region. Tourism has grown faster in the last decades due to the implementation of several regeneration interventions made possible by the realisation of several projects facilitated by European funding contribution.</i></p> <p><i>Thanks to these projects, the historical centre of the city has undertaken a deep transformation of its exterior outlook, including the main Cathedral, the several baroque Churches,</i></p>
-----------------	---

the historical buildings, the roman amphitheatre, and theatre, the external ancient walls, the restoration of the original pavement ("basolato") and so on. However, still much need to be done. Among these the presence of aerial electric cables is still visible everywhere which negatively affects the full fruition of the artistic and historical man-made artefacts. In addition, associated to medium/high tension cables there is the problem of the increase of the electric magnetic field locally and the consequences of this type of environmental pollution for sensitive receptors (e.g. schools, hospitals etc.).

Starting from these considerations, the Lecce BHC project developed around the idea of identifying actions to complete the removal of aerial data transmission lines and medium tension cables in the historical centre of Lecce and to extend these types of interventions also in one of the peripheral neighbourhoods, where the main city's electrical sub-station is present.

Besides, the above objective reasons, the project intended to put the basis for future city territorial planning by implementing the new methodology based on health indicators developed within the BHC project. It was chosen a neighbourhood located in the outskirts of the city that overlaps with some of the physical boundaries of the city and where the future city expansion is likely to occur. This neighbourhood has the advantage of having some green natural areas, and the presence of old quarries which could be preserved, regenerated and managed for the development of "healthy corridors" between the centre and its peripheral zones.

Following the objectives designated above the Lecce LAP has been built on the basis of previous Actions carried out by the Lecce Municipality. Specifically those Actions addressed the removal of aerial wires and cables in the historical centre. In previous Actions about 3.6 km of electric cables were laid underground. Other Actions have been planned to deal with about 2 km of cables. During the project a series of Actions has been initiated (including both fund raising and actual structural planning) devoted to completion of the removal of aerial cables in the historical centre and in relation to the electric network that is connected with neighbourhood towns.

Specifically the main aims of the Lecce LAP in the context of BHC were:

- to complete the laying underground of aerial electrical and data transmission lines in the historical centre and in the outskirts neighbourhoods;*
- to contribute to reduce the electromagnetic field linked to electromagnetic pollution when relevant;*
- to continue the implementation of the program for the improvement of city outlook with the aim of further promoting tourism and the connected economical growth;*
- to promote the start of new programs for urban regeneration leading to the constitution of "healthy corridors" linking the city centre with the its peripheral neighbourhoods;*
- to promote within the public administration a further understanding of the close relationship between urban regeneration and quality of life of citizen by introducing*

	<p><i>the concept of citizen consultation;</i></p> <ul style="list-style-type: none"> • <i>to promote a new fruition of the city from citizens.</i>
--	--

Basic description of the background and setting	
Summary	<i>This project provides the ground for urban regeneration plans where people's perception of public space are clearly analysed and addressed</i>
Challenges that the practice addresses	<i>The real problem tackled in the project is at its core how to modify the environment without introducing further stresses' factors considering that any modification of the land-use may influence the microclimate. The consequences of any physical intervention may also influence how local transports (vehicles, buses, motorbikes, bicycles etc.) in a given city are planned. In our approach we adopted an holistic methodology which take into account the various aspects of the intervention from the technical and scientific point of view to the social and economical aspects. The assistance and advice provided by specialists both from academia and research institutes in each sector were somehow mandatory to achieve such a balance.</i>
The Context	<p><i>Our project has well-defined objectives: removal of cables and planning new healthy corridors through the realisation of a path that connects the historical centre with its outskirts. It also aims to design alternative plans for the removal of a electrical sub-station in one of the most popular outskirts of the city. These objectives were very simple and controllable. It was our intention to start with tangible and confined interventions where other elements could have been added on the way.</i></p> <p><i>The realisation of the project started with the identification of the areas with natural green space and dismissed quarries and design the elements of intervention by identifying the most efficient Local Support Group .</i></p> <p><i>To this aim it was decided to generate interest for the BHC project by introducing the themes and objectives of the BHC project to members of an existing working group of the Municipality of Lecce. This group formed already during the definition of the so-called "Lecce area Vasta (the territory of Lecce and surrounding municipalities)" programme. The scope of the programme was the identification of common priorities for structured and efficient environmental intervention and improvement. It is based on a high multi-disciplinary approach ranging from technical to social and economical aspects. Given the strong connection between territorial development and quality of life, both this programme and the BHC project had similar stakeholders.</i></p>
Aims and objectives	<i>The key aims of the practice adopted were to use trans-disciplines indicators and numerical modelling to evaluate the results of the undertaken actions. Indicators were not considered as pure metric tools to quantify specific results but also a way of exploiting results of the project. For example we not only used physical indicators, economic and social indicators but also i) a suitable combination</i>

	<i>through statistical cluster analysis and ii) predictive tools (numerical models) to evaluate ex-ante the effect of changes on the physical environment. Although the use of indicators and models is not a new practice taken each in isolation the combined use of them is innovative for this type of project.</i>
Social Innovation	<p><i>An essential part of our working methodology was the involvement of the local population which was informed through public events of the existence of the BHC project and its objectives and invited to contribute and share ideas.</i></p> <p><i>In addition, but fundamental in our methodology and approach was the strong involvement of the local media and press. Several articles were published regularly during the BHC project in local newspapers as well as in the local TV.</i></p> <p><i>Also two videos (one short in Italian and one longer in Italian and English) to describe the Lecce LAP objectives and aims were produced and made publicly available. The production of those videos was one of the strength of our working methodology and resulted to be very effective in the promotion of the BHC project vision to Lecce citizens and beyond. The incorporation of innovative visual tools in presenting our ideas to the local population can be considered innovative not only in our city but also at regional/national level.</i></p>

Case: Concise description and explanation of the practice	
Main components or parts of the practice	<i>The main components of the practice was the realisation of the Local Support Group. This guided the problem's identification and the approach to be followed. As already explained above it was important to adopt an holistic approach for the realisation of the project which included all aspects of the intervention from the technical and scientific aspects to the social and economical ones</i>
Timing - Start and duration	<i>The Action started with the inclusion of Lecce Municipality in the BHC project in 2009. The first phase of the project is completed and ended with the end of the BHC project. Currently, the Municipality of Lecce is starting the second phase of the project that is the implementation phase.</i>
Process - Development over time	<i>The process of the project was closely monitored through a tight coordination. Several meetings were undertaken during which technical individual results were analysed and evaluated. The evaluation procedure was undertaken in a consensus form by the contribution of managing authority and stakeholders</i>
Overcoming challenges	<i>One of the challenges during the project was the loss of momentum and interest by stakeholders and some of the Local Support members. This was most probably due to the modest financial resources available for running the project. This difficulty was somehow overcome by including the participation of other individuals already working in closely related projects within the Municipality and attract the attention of local citizens through the promotion of info days and workshops.</i>
Transnationality	<i>The BHC project has been a valuable and indispensable mean to gather information available at European level and to transfer it locally. The participation in the project of several cities representative of different geographical and economical areas of Europe was essential for the identifying the strategy of the Lecce project i.e. the adoption of the holistic approach. This somehow will</i>

	<p><i>allow our project to be exported in other contexts.</i></p> <p><i>Most probably without BHC the involvement of local citizens would have been less effective and attractive. The participation of our city in a European project has helped us to generate interest with the Managing Authorities. The results we have achieved have been validated through the direct comparison and sharing with other cities. This would have been not possible without BHC.</i></p> <p><i>The main idea of having “city donor and beneficiaries” implemented through the Exchange meetings has been one the key elements of innovation within BHC. Our city has assumed both the role of beneficiary and donor during the project. Both roles have been important for the achievement of the final results.</i></p>
Key actors	
Main actors involved	<p><i>The main idea of the project was developed by the Urban Planning Department of the Municipality of Lecce that takes care of the territorial interventions. The main players were more than twenty professionals (architects, engineers, ecologists, medical doctors, lawyers and others) many belonging to managing levels from various public institutions ranging from the smallest municipalities to the Lecce Province and to the Apulia region, as well as representatives from the University of Salento, the Italian Research Councils (CNR), the Regional Protection Agency (ARPA) and others. The group had monthly regular meetings which led to the formulation of the LAP and its goals. Once the LAP was formulated, it was decided to work with a smallest group of experts. They actively contributed to the identification of indicators, to inform local population about the importance of working at a European level as well as contributing to the implementation of the various stages of the project according to BHC schedule. This smallest group includes staff (around ten people) from the Municipality of Lecce and the Department of “Urbanistica”, environmental experts from the University and CNR as well as some external experts and representative of the Apulia Managing Authority. Several individuals mainly professionals were also invited to the regular meetings of the Local Support group. Stakeholders were involved through the various meetings organised during the all duration of the project.</i></p>
Coordination mechanisms	<p><i>The coordination was done through the appointment of a scientific coordinator and a technical adviser. The two individuals run the regular meetings and ensured the timely deliver of results (reports, questionnaires, meeting planning and execution and so on).</i></p>
Participation	<p><i>Local citizens were taken actively informed through the invitation to participate to public events. Presidents of the association of citizens of the interested neighbourhoods were invited to join the Local Support Group and had the responsibility of keeping local population active in the project. The media were used to publicize the project at larger scale.</i></p>
Supporting programmes and funding sources	
Total cost and Sources of funding	<p><i>An important aspect of the project has been the identification of funding programmes. For our case these programmes can be summarised in the following</i></p> <ul style="list-style-type: none"> • <i>Programma Operativo Fondo Europeo di Sviluppo Regionale (PO FESR) Puglia 2007-2013, Asse VII “Competitività e attrattività delle città e dei sistemi urbani”, Linea di Intervento 7.1</i>

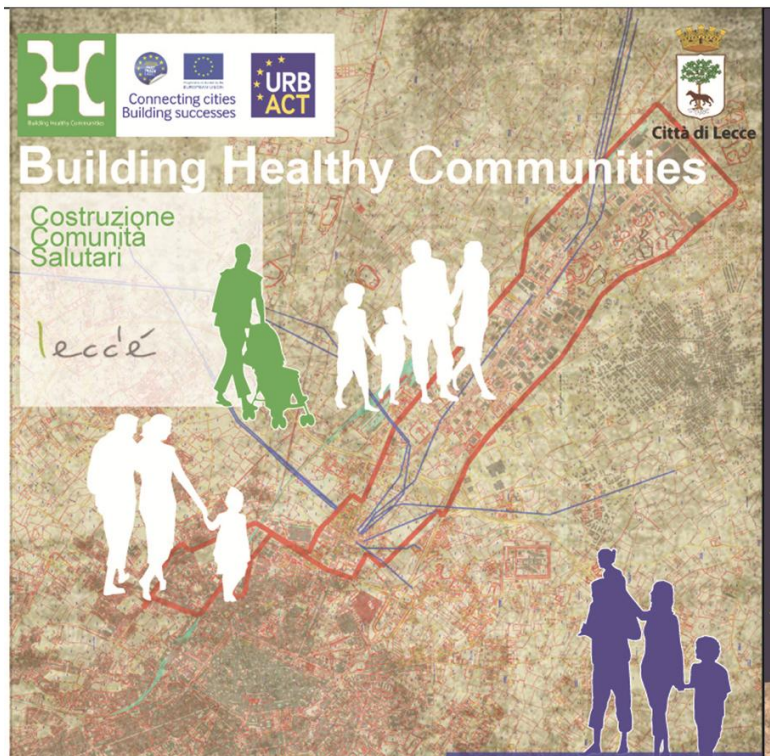
	<p><i>“Piani integrati di sviluppo urbano”.</i></p> <p><i>Action strategies: Integrated development plans for the city. Those plans will be focused on the ecological recovery, especially of those city areas where there has been an increasing industrial construction during the 60s and 70s and whose expectations have not been met. On the contrary, it has created new environmental problems as well as a economic development delay. In this context, particular attention will be paid to cities where there is a high risk of environmental crisis changes.</i></p> <p><i>Integrated urban development plans will be focused on the safeguard, valorisation of the cultural patrimony and fruition of the environment, especially in those areas characterized by high cultural, historical and symbolic significance as well as by environmental, social and economical problems due to the abandonment. Intervention strategies: infrastructural interventions, integrated urban development projects.</i></p> <ul style="list-style-type: none"> • <i>Programma Operativo Fondo Europeo di Sviluppo Regionale (PO FESR) Puglia 2007-2013, Asse VII “Competitività e attrattività delle città e dei sistemi urbani”, Linea di Intervento 7.2 “Piani integrati di sviluppo territoriale”.</i> <p><i>Action strategies: interventions focused on the valorisation of artefacts and abandoned places (within the city and in the neighbourhood) by mean of the construction of material and immaterial networks. Intervention strategies: infrastructural interventions, integrated urban development projects.</i></p> <ul style="list-style-type: none"> • <i>Programma Attuativo Regionale Fondo Aree Sottoutilizzate (PAR FAS) Puglia 2007-2013, Linea di Azione 7.1 “Interventi per l’edilizia residenziale sociale e la casa nel contesto della riqualificazione urbana”.</i> • <i>Activities: b) urban regeneration through environmental remediation (LR 21/08). Action strategies: pollution reduction and elimination in the city</i> • <i>Programma Attuativo Regionale Fondo Aree Sottoutilizzate (PAR FAS) Puglia 2007-2013, Linea di Azione 7.3 “Azioni pilota programmate in fase di elaborazione del PPTR a livello di Area Vasta e di azioni di regia diretta ad esso riferibili”.</i> <p><i>Activities: a) activation and realization of preliminary pilot projects developed within the PPTR in the Area Vasta project or directly directed by the Region. Objectives: link the landscape quality to the life quality (including production, consumption...)</i></p> <ul style="list-style-type: none"> • <i>Programma Attuativo Regionale Fondo Aree Sottoutilizzate (PAR FAS) Puglia 2007-2013, Linea di Azione 7.5 “Miglioramento della qualità ambientale nelle aree urbane”.</i>
EU financial contribution	17.250 €
Annual budget in Euro	<i>For the future implementation of the project it’s foreseen a need of about 1 million € per annum</i>
Immediate and lasting results	
Overall impact	<i>The project BHC has been an extraordinary opportunity for the city of Lecce to re-think about a new strategic development of the city and its territory. As already mentioned several activities were initiated to inform and involve local population and possible stakeholders about LAP and BHC Program. Among those the most successful are the two-day national workshops “ECOLecce” which</i>

	<p><i>held in Lecce in April and July 2010, the workshop held in February 2011 and the international BHC workshop held in March 2011. These workshops were platform for promoting some of the new ideas and results obtained by BHC regarding health indicators and improvement of quality of life. Also, the videos which were publicly shown and made available on the BHC web site were a successful tool to synthesize the results achieved in an effective manner and to generate interest between stakeholders and potential investors.</i></p> <p><i>According to feedback received, Lecce citizens benefited greatly by the various events organized and information delivered and increased their awareness about the right for a healthy life style in urban centers.</i></p> <p><i>To conclude an extra added value of the Lecce BHC project can be seen in the overall structure undertaken during the phases which led to final results. Specifically the LECCE project assumed to follow a sort of “enlightened” approach which connect people needs to the implementation of final actions through public consultation, the decisive scientific knowledge, technical expertise and decision makers in an objective and transparent manner towards a sustainable development of the territory.</i></p>
Beneficiaries	<p><i>The main beneficiaries of the projects were the entire Lecce Municipality as well as other neighboring cities which could have access to the project details and ideas developed for future implementation in their cities. Obviously, it is expected that the main beneficiaries where local citizens although the actual verification can only be achieved in future years.</i></p>
Concrete results	<p><i>Given the nature of the project which was improving people's perception of public space and the promotion of healthier life style it was not possible to assess the impact of the various indicators used. It will require a few years to do that. However, as already stated above indicators where used to identify weak points of previous interventions which had a poor use of health indicators. In this sense the concrete results of this projects were the adoption of the approach used here in current ongoing project at our Municipality. . The Lecce LAP was developed on the basis of existing actions. However, through the BHC project the overall objectives were widely enriched. For example while initially these actions concerned only the burial underground of electric cables, during the project it was given a more wide perspective by including the promotion of health indicators and sustainable development. This led to identification of “healthy corridors” for the city of Lecce. The participation of the regional Managing Authority was decisive in pushing us towards the definition of a actions plans which could be transferable to other cities in the region. In summary while initially the Lecce LAP intended to respond to local needs, during the experience gained in the various project phases it was developed towards a sort of pilot project which could be set as an example for other intervention concerning urban environments.</i></p>
Impact on governance	<p><i>Although the overall impact of a project on governance cannot be attributed to results of a single project, it is understood that health indicators for instance needs to be included more systematically in the actions being undertaken by the Lecce Municipality. In addition, it has been clarified that any intervention on the territory that leads to sustainable development requires the inclusion of people's needs. This may be achieved by including the active participation of citizens in the project proposals' definition.</i></p>

Lessons to be learnt	
Success factors	<i>The key factors which led to success were i) the clarity of the objectives; ii) the active role played by the Local Support Group; iii) the realisation of many public events and workshops; iv) the international level of the project; v) the effective management of the BHC project at European level; v) the support of the Managing Authority</i>
Barriers, bottlenecks and challenges	<ul style="list-style-type: none"> - <i>poor level of funding;</i> - <i>loss of momentum;</i> - <i>to keep the involvement of stakeholders high</i>

Future issues	<i>Future issues to be tackled are the access to funding which will require some time. Although there is an interest from the Managing Authority for our project formal requirements for funds to be released needs to be made. Those procedure may delay the implementation of the project.</i>
Transnationality	<i>As already mentioned the participation to BHC as a mean to make our case at international level had many positive aspects. Without it, the attention of the Managing Authority would have been less strong. The attention of the local media and local citizen would have been much less.</i>
Duration	<i>The project will continue in the following months until the adequate source of funding will be obtained.</i>
Transferability	<i>The practice we adopted can be transferable because the procedure and methodology developed is disjoint by the application.</i>
Expert opinion	<i>The case presented is interesting because it combines all aspects of a practical and real intervention on the territory (this is typical in many local authorities or municipality) with up-to-date methodologies in the field of urban sustainability. It combines various disciplines under the umbrella of scientific and technical innovation. The contribution of scientific experts from academia and research Institute has been very valuable.</i>
Stakeholder opinion	<ul style="list-style-type: none"> - <i>the case is of interest for local citizens because it deals with improving quality of life at local scale taking into account needs of population in specific areas of intervention (local citizen).</i> - <i>the case is valuable and worth to be implemented because it brings together several elements of originality and usefulness for the promotion of sustainability in our cities (funders)</i> - <i>the case is a good example of how different approaches can be combined together and how local professionals can have access to up-to-date techniques for the execution of their work (partners)</i>
Information sources	
Name of the initiative	<i>Building Healthy Communities (BHC)</i>
Country/region/city etc.	<i>Municipality of Lecce, Lecce, Puglia, Italy</i>
Administering organisation(s)	<i>The project was administered by the Municipality of Lecce. The work was mainly conducted by the Local Support Group and co-aided by citizen's representative, a group of young-stage architects, and a group of young professionals</i>
Contact details of administering organisation(s)	<p><i>Arch. Luigi Maniglio (BHC project co-ordinator), Lecce Municipality, luigi.maniglio@comune.lecce.it;</i></p> <p><i>Arch. Greco (BHC LSG member) Municipality of Lecce mariaantonieta.greco@comune.lecce.it</i></p> <p><i>Ing. Sofia Cordella, LSG Expert Consultant, Lecce Municipality sofia_cordella@hotmail.com;</i></p> <p><i>Dr Silvana Di Sabatino, (LSG scientific co-ordinator) University of Salento silvana.disabatino@unisalento.it</i></p>

	<p><i>Dr Raffaele Parlangei (BHC project manager), Lecce Municipality</i> <i>raffaele.parlangeli@comune.lecce.it;</i></p> <p><i>Dr Teresa Magrini, (BHC project team), Lecce Municipality</i> <i>t.magrini.ue@comune.lecce.it;</i></p> <p><i>Mrs Claudia Loiacono, (BHC project team), Lecce Municipality</i> <i>claudia.loiacono@comune.lecce.it</i></p>
Interviewed persons	<i>About 200 people were interviewed during the course of the project in several occasions: public info days, workshops and conferences. The complete list of people is available on request.</i>
Other documentation sources	<i>During the BHC project, several documents and articles of different nature have been produced by the Local Support Group.. Some of them, in Italian can be found in Lecce Municipality web site (www.comune.le.it) and others in English can be found on the official BHC web site. Of interest is the video projected during the workshop held in Lecce in March 2011. Of further interest is the production of the city guideline which is used to promote our results between BHC.</i>
Website URL	e.g. http://urbact.eu/project
Main author of the case	<i>Silvana Di Sabatino and Local Support Group</i>



Lecce city guide



Existing aerial lines in Lecce outskirts



Building new healthy corridors emphasizing elements from the natural environment

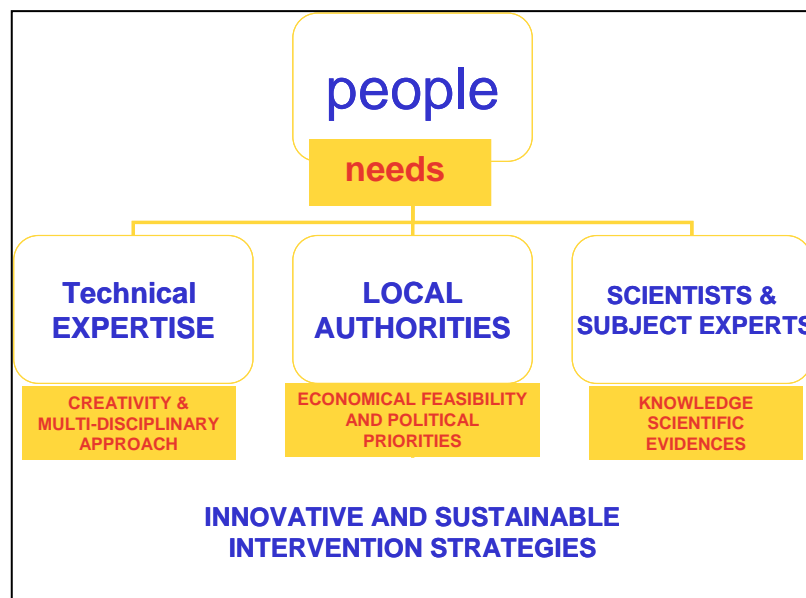


Diagram illustrating the project philosophy