

GreenPlace Let's do it together!

INTEGRATED ACTION PLAN

Limerick



Table of contents

| | | |
|--------|---|----|
| 1. | GREENPLACE. Let's do it together! | 3 |
| 2. | Why an Integrated Action Plan? | 4 |
| 3. | Context, Needs and Vision | 5 |
| 3.1 | Context | 5 |
| 3.2 | Relevant Existing Strategies | 6 |
| 3.3 | Local Challenge | 7 |
| 3.4 | Green Place in the Working Practices of Limerick | 8 |
| 3.5 | Problem Identification with and by Local Stakeholders | 8 |
| 3.5.1. | GreenPlace ULG | 8 |
| 3.5.2. | ULG Methodology | 9 |
| 3.5.3. | Co-Identification of Local Priorities | 10 |
| 3.5.4 | Co-Created a Vision for GreenPlace | 12 |
| 3.5.5 | Main Integration Challenges | 14 |
| 3.6 | Testing Actions | 15 |
| 3.6.1 | Testing Action Social Events | 16 |
| 3.6.2 | Testing Action Table | 18 |
| 4.0 | Overall Logic and Integrated Approach | 22 |
| 4.1 | Intervention Areas | 22 |
| 4.2 | The Strategic Objectives | 23 |
| 4.3 | Action Table | 27 |
| 4.4 | Integration of your Action Plan | 30 |
| 4.5 | The URBACT Cross-Cutting themes in your Action Plan | 32 |
| 5 | Action planning details | 33 |
| 6 | Implementation framework | 39 |
| 7 | Conclusion | 42 |
| 8 | Annexes | 44 |
| | Annex 1: Stakeholder analysis table | 44 |

1. GREENPLACE. Let's do it together!

GreenPlace is an URBACT network consisting of ten partners who aim at developing a set of activities for "recycling" unused urban areas, using social participation tools. The project takes into account not only the regional specificities and conditions of each of the partners but also introduces greenery as a key factor in limiting climate change in urban areas. It is running from July 2023 to December 2025.

It is led by the City of Wroclaw (Poland) and is composed of 9 project partners:

- Boulogne-sur-mer Développement Côte d'Opale - France
- Bucharest Metropolitan Area Intercommunity Development Association - Romania
- Cehegín - Spain
- Limerick - Ireland
- Löbau - Germany
- Nitra - Slovakia
- Onda - Spain
- Quarto d'Altino - Italy
- Vila Nova de Poiares - Portugal



Figure 1 GreenPlace Network

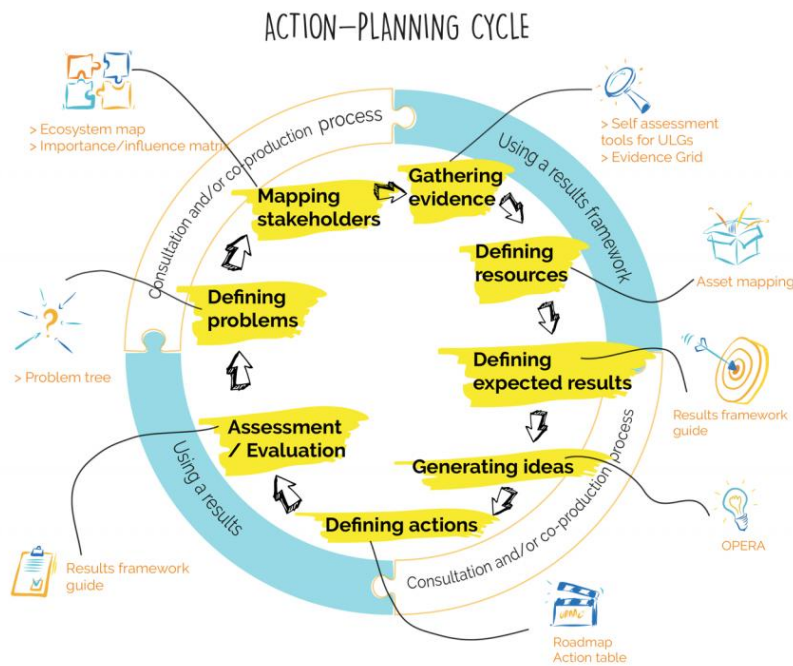
2. Why an Integrated Action Plan?

An URBACT Integrated Action Plan (IAP) is a key element of the URBACT methodology. It is a city-level output that defines actions to be implemented in order to respond to a specific urban policy challenge - reflecting the lessons learned from local stakeholders, transnational partners and the testing of actions at local level.

IAPs thus provide both a focal point and end goal of the action planning journey that cities undertake within their URBACT Action Planning Network (APN). IAPs help to ensure that both local-level discussions (within the URBACT Local Group) and transnational exchange (between the network partners) have a practical focus on planning a coherent set of actions to address the local policy challenge in each participating city, embedding an integrated and participative approach.

IAPs are future oriented – setting out the actions that cities will implement beyond the life cycle of the URBACT network. For this reason, each IAP not only sets out what the city intends to do on its specific topic, but also has a strong implementation focus, for example through the identification of specific funding opportunities, governance structures and timelines for how the actions will be implemented and monitored.

The IAP links with the overall [URBACT Action Planning Cycle](#).



3. Context, Needs and Vision

Restoring the visibility and accessibility of the old City Wall in Irishtown and its forgotten surrounding areas as a source of local heritage and pride, green spaces, natural habitats and community engagement.

3.1 Context

Limerick is the third largest city in the Republic of Ireland and is located 200 kilometres from the capital, Dublin, and approximately 60 kilometres inland from the Atlantic Ocean. According to the 2022 census, the population of Limerick is 205,444 with the urban/city population reaching 100,000. Limerick city has 73sqm of urban greenspace per capita, which is above the ideal WHO value (50 sqm) and exceeds by far the European average (18.2 sqm). The city's main areas of natural habitats are based around the large network of rivers, including the River Shannon, the Abbey River, the Park Canal and the Ballynacloough River with associated wetlands, as well as grasslands and established woodlands.

Limerick's climate is classified as temperate - being a mild climate with an annual average rainfall of 927mm, and an average temperature of 10°C.

Limerick county (hinterland) possesses a strong off-shore renewable energy potential, that is being investigated by the Shannon Estuary Eco Taskforce. The three largest economic sectors in Limerick are wholesale and retail trade, construction, and professional, scientific and technical activities.

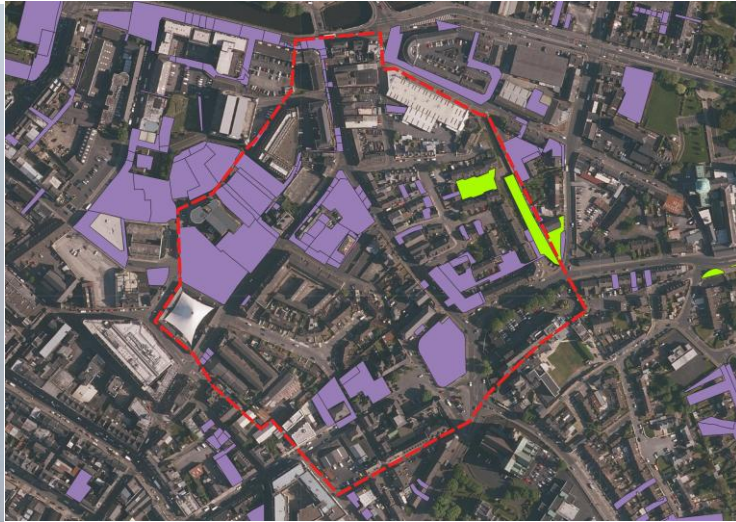
The city is also host to a number of colleges and universities including; the [University of Limerick](#), [Technological University of the Shannon: Midlands West](#), and [Mary Immaculate College](#) .

In terms of employment, the key sectors are human health and social work. Limerick city has large numbers of people not in work (due to unemployment, inability to work due to illness / disability or otherwise inactive). There are also significant numbers with low education and lone parent households with young children. The goal of the [Local Economic and Community Plan for Limerick City and County 2023-2028](#) (draft at present) is to establish the objectives and actions necessary to promote and support the economic development with local communities in mind. Limerick is a good place for business and employment, providing good quality jobs for all.

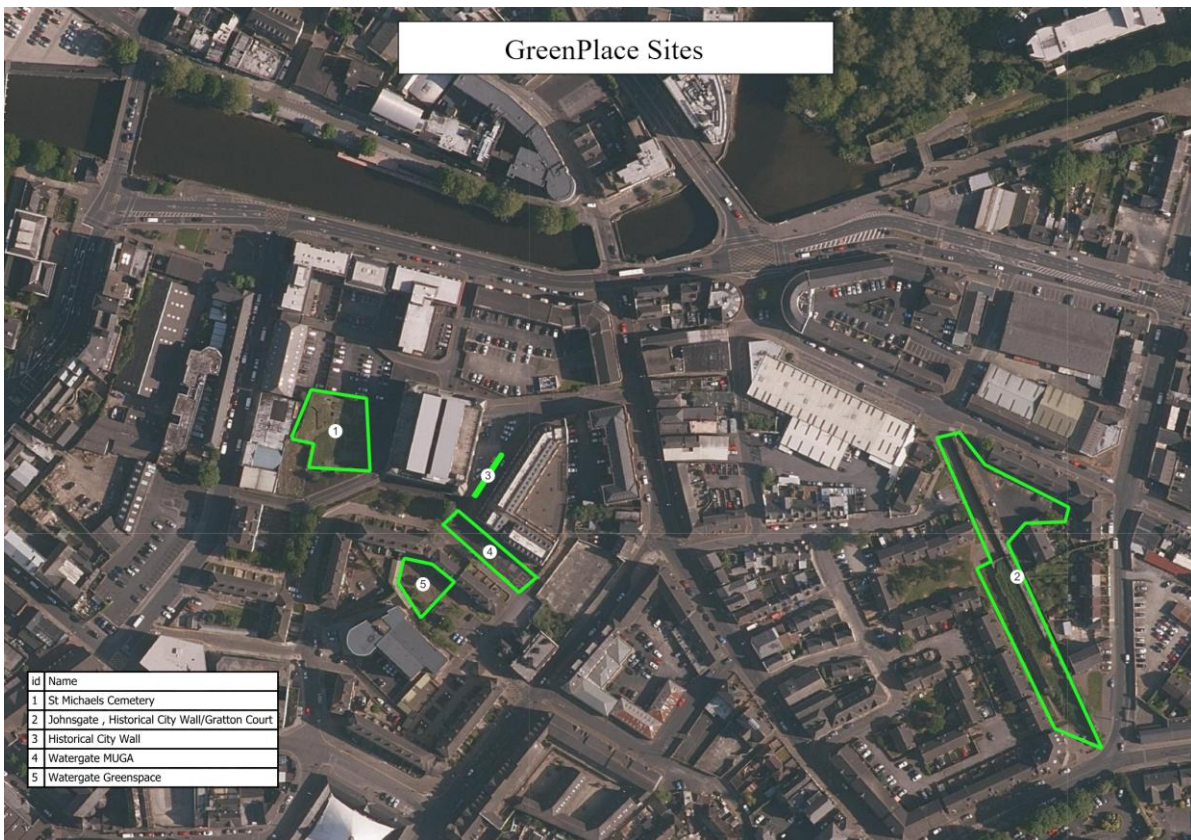
[Limerick City and County Council](#) has 40 elected members. Elections are held every five years and are by single transferable vote. In May 2019, the people of Limerick city and county voted in favour of a proposal for a directly elected Mayor with executive functions. An election to choose a Mayor was held together with the local and European elections on 7th June 2024. Limerick is the first ever local authority in Ireland where the voters were able to directly elect their Mayor. The Mayor of Limerick is the first Mayor in the country's history to have executive powers.

Limerick city is almost 1,100 years old. It has been a Viking settlement, a medieval walled town, and a Georgian city and is now a modern, vibrant metropolitan area with a rich and historic hinterland. Limerick is one of fifty-six walled towns in Ireland with physical or documentary evidence of walled defences. Appreciation of the location of the defences provides invaluable insights into Limerick's urban development. The monument known as the 'Limerick City Walls' plays an intrinsic part in the daily life of Limerick city to this day.

The Limerick City Defences incorporates the city wall, King John's Castle, towers, gates, fosses, ramparts, earthworks and other features which date from the eleventh century with modifications and additions right up to the end of the seventeenth century. The city evolved into two walled circuits namely, Englishtown (circuit 1650m, 14ha) and the suburb or basetown known today as Irishtown (circuit 1375, 13ha), and their imprint can still be seen in the urban landscape, most notably in the street pattern of the city today.



While Limerick city is one of Ireland’s oldest cities, many parts of the walls lack community awareness, and/or citizen ‘buy in’. There are a number of underutilised upstanding and below ground stretches of city wall of Irishtown in Johnsgate/Grattan Court/Old Clare Street on the east side which mirror a further stretch of wall close to further under utilised green areas, a multi-use games area (MUGA), and St Michael’s cemetery on the west side of the walled circuit in the Watergate area. The linear route between these two is Limerick’s focus for the GreenPlace project.



Green infrastructure that is sympathetic to and enhances peoples' nature connection with the walls in Irishtown is underdeveloped. Green solutions are virtually unknown and there are relatively few examples across the city to develop further. Cycling and walking infrastructure has progressed in recent years, however, greater development of and linkages between the city walls, the MUGA and green spaces could also bring added benefits economically (tourism, recreation).

This URBACT GreenPlace IAP is a valuable strategic document that will inform future plans for 'forgotten' historical spaces in the city so as to improve linkages between past and present, provide opportunities for social engagement and physical activity as well as enhancing biodiversity in (under)developed areas.

3.2 Relevant Existing Strategies

Limerick is aiming to become a green city region on the Shannon Estuary through engagement, innovation, resilient urban development and self-sustaining communities.

The GreenPlace project aligns with our existing strategies and objectives.

Limerick City and County Council's GreenPlace IAP will be informed and draw, where applicable, from these wider policy type documents.

This includes the Protection of Natural Heritage and Biodiversity Policy which focuses on protecting and conserving Limerick's natural heritage and biodiversity. It includes continuing to actively support the aims and objectives of the *All-Ireland Pollinator Plan 2021 – 2025*, by encouraging measures to protect and increase the population of bees and other pollinating insects in Limerick.

The [Limerick City Walls Conservation Management Plan](#), a conservation and management plan to retain, conserve and improve the fabric and integrity of the monument Limerick city walls was adopted by the Council in 2008. Limerick is a long-standing member of the Irish Walled Towns Network, the proposed project aligns completely with The Irish Walled Towns Network Strategy 2024-2028's Vision of Connect, Conservation & Regeneration. Limerick's Development Plan 2022-2028 underpins both of these documents in Objective EH O42 Town Defences and Layout. It is an objective of the Council to protect town defences and plot layout, carry out the objectives of the Conservation and Management Plans for Limerick City and Kilmallock and support the work of the Irish Walled Towns Network.

The purpose of the [Limerick City and County Heritage Plan 2017 - 2030](#) is to ensure Limerick's heritage continues to be unique and diverse, while being accessible to all. Key priorities are identified for a number of heritage areas in which Limerick City and County Council works including archaeology, built heritage, architecture, public realm, archives, the museum, biodiversity and environmental awareness, cultural heritage, local history, the diversity and integration of new communities.

The objective of the [Limerick Green and Blue Infrastructure](#) (GBI) strategy is to provide an evidenced based report that sets out a detailed series of recommendations to guide land use, objectives, policies, and design guidance on a wide range of GBI related issues within the proposed Limerick's Development Plan 2022-2028. The Blue and Green Infrastructure Strategy aligns with this policy as it guides the development of blue and green networks in Limerick for citizens (recreation, active travel, play, commute), conservation (wildlife habitats) and nature based solutions in public realm design.

The [Noise Action Plan 2024-2028](#) sets out to proactively manage environmental noise where it may have a significant adverse impact on the health and quality of life. The Council supports the aims of the Environmental Noise Regulations, through the development and implementation of Noise Action Plans.

Limerick City and County Council Climate Action Plan arising from The Climate Action and Low Carbon Development (Amendment) Act, 2021 enshrines the National Climate Objective to pursue and achieve, by no later than the end of 2050, the transition to a climate resilient, biodiversity rich, environmentally sustainable and climate neutral economy.

Developing as an environmentally sustainable and carbon neutral economy, a pioneer in sustainable growth, and the delivering of key recommendations are objectives also found in the [Limerick City and County Development Plan 2022-2028](#).

The URBACT GreenPlace IAP provides an opportunity for strategic thinking and planning for deliverable, manageable initiatives and projects to be taken forward by building on existing structures in Limerick City and County Council. The IAP draws on a number of collaborative projects and policy relevant programmes completed and ongoing in the city.

3.3 Local Challenge

The GreenPlace project is concerned with the urban regeneration of forgotten places and bringing them back for and with residents. The question therefore is how to reactivate, reanimate green spaces that have lost their primary function through circumstance, so that they can become once again functional spaces for communities, biodiversity and even tourism.

The URBACT GreenPlace IAP for Limerick city focuses on the Irishtown area of the city, in particular on the east, a standing section of the Old City Walls in Johnsgate/Grattan Court linking with an adjoining below ground section of the wall along Old Clare Street and also across to St John's Hospital where stands another section of the wall and the Citadel, the once military barracks of the Limerick Siege in 1691. The connectivity across to St John's Hospital is lost by the presence of New Road which segregates both standing sections of the City Wall. One of the actions that must be considered in this project is how to provide greater connectivity between these two sections of the City Wall. To the west at the Watergate Flats close to another two sections of the City Wall, is an unused multi-use games area (MUGA), under utilised open green spaces and the green space associated with St Michael's Cemetery, outside the walls. These discrete areas provide an east west link across the Medieval City which has the opportunity to link with the newest development, the Opera Centre. The Opera Centre development is a multi million euro development for Limerick, one of the key transformational projects identified in Limerick 2030, An Economic and Spatial Plan for Limerick.



Figure 2 Standing section of the wall Johnsgate



Figure 3 Watergate Flats

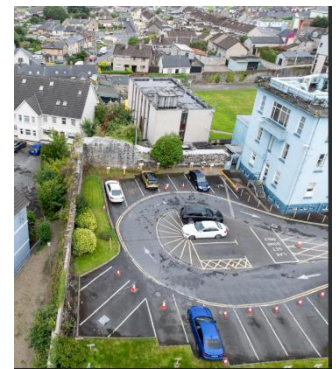


Figure 4 Standing section of the wall ,St Johns Hospital

These areas in Johnsgate and Watergate have been chosen because they all currently lack amenity value. The majority contain underutilised open space for physical activity, biodiversity and recreation and all are disconnected with limited permeability. In addition, these areas suffer from significant anti social and drug related activity and considered disadvantaged areas of the city due to the low level of employment. The areas are also poorly lit and there is a perception of the area being unsafe which is contributing to the many anti social issues in these areas. There is untapped tourism potential in relation to the heritage of the City Walls due to their inaccessibility. There is a lack of awareness or connection to the history of the area and this is the main focus of the project in order to restore these forgotten areas for the benefit of the residents. There has been little or no investment in the Irishtown area of the city with the exception of the Opera Centre which is now under construction. This transformational development will have added benefits for the GreenPlace project areas as connectivity to this development is vital in term of providing footfall to the project areas.

3.4 Green Place in the Working Practices of Limerick

Limerick City and County Council have delivered a number of URBACT projects in recent years, such as Health and Greenspace and Find Your Greatness. There is familiarity with URBACT tools, financing, methodologies and purpose. For example, two members of the current team have worked on URBACT Health&Greenspace. The core team is represented by three employees of the Council comprising the Project Coordinator, ULG Coordinator and the Council's Archaeologist. The core team have a strong working 'old' knowledge of Limerick city as well as extensive experience of working for, and with a wide range of diverse communities. The core team have identified members from other departments in the Council to be represented on the ULG group, Public Realm, Arts, Housing, Community Sustainment, Planning, Archaeology, Conservation and Environment.

The core team identified third party stakeholders that should also form part of the ULG group. They are as follows:

Paul Partnership, Johnsgate Residents Association, the Gardai, St Johns Hospital, Mary Immaculate College, Focus Housing Association, Eurocarparks & Chester Developments.

3.5 Problem Identification with and by Local Stakeholders

3.5.1. GreenPlace ULG

The process of building the URBACT GreenPlace IAP for Limerick is based on the discussions held in the URBACT Local Group (ULG) meetings and activities. The ULG is represented by both local actors and stakeholders. The level of involvement is as diverse as the group itself, with some stakeholders assuming a very active role with others remaining content to be informed of the development of the project.

- Municipal - Organisations and public servants within Limerick City and County Council. While many departments were involved in the project, there was a specific focus from Environment, Parks, Archaeology, Housing, Community, Planning, Arts, and Public Realm.
- Social and Educational organisations - There is a growing interest in the benefits of green areas for health and wellbeing, biodiversity, recreation and Limerick delivers a range of social, inclusive and educational courses and programmes for all ages in sport, environmental topics and community led initiatives.

This led to the identification and inclusion of Limerick Sports Partnership, Paul Partnership, Mary Immaculate College, St John's Hospital and Limerick City Tidy Towns to be included on the ULG group.

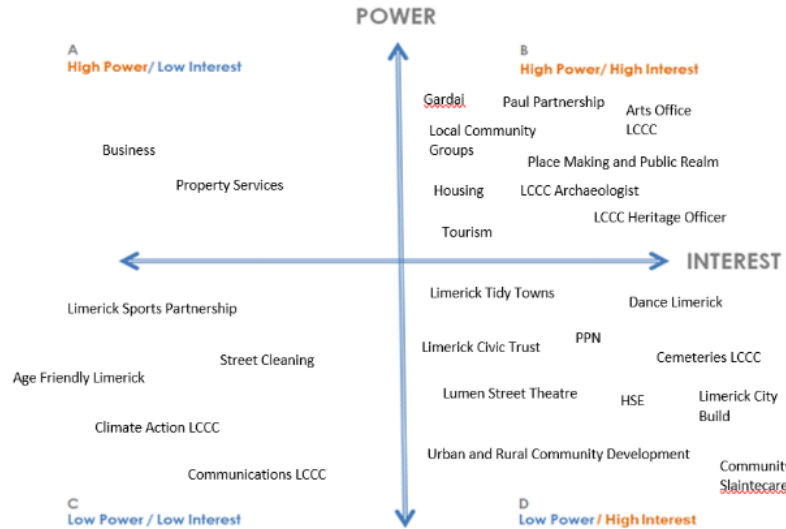
Building upon previous experience, it was decided early in the project that the ULG would have a strong input from local residents, gathering and sharing ideas to help manage the expectations of the majority of stakeholders within that context. For example, through consultation with the ULG, it was concluded that Limerick's primary focus should be on enhancing access to and animating the city walls in Irishtown which are failing to realise their full amenity value and enhancing permeability.

The ULG is strongly based on the legacy from the Health and Green Space network and adjusted to take account of the specific locations identified for this project. The ULG group is coordinated by the ULG coordinator who organises regular 3 monthly meetings with the ULG members, where a presentation is made to update members on the status of the project.

The core team with the assistance of a number of URBACT tools identified the key stakeholders that would be required in order to deliver the IAP for the GreenPlace project. The Stakeholder Influence matrix was used to determine which stakeholders were more influential than others and which stakeholders were most interested and could benefit from the project.

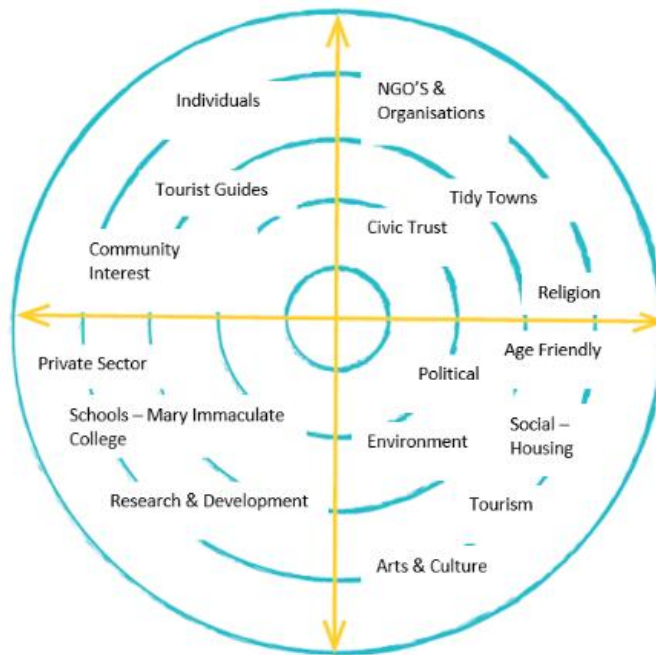
| STAKEHOLDERS | What interests? How affected by the issue? | Capacity? Motivation? | Possible actions to address Stakeholder interests |
|---|---|--|---|
| LCCC Housing Department | Social houses in the area. Effected by anti-social behavior, vandalism. | Potential role to further enhance the area through funded projects | The project and subsequent IAP, will lead to improvements in the public area and a greater footfall. |
| Residents Association and apartment residents etc | Live in the area. Effected by lack of permeability, dereliction, anti-social behavior. Do not feel safe. Issues with litter/rubbish | Capacity to apply for funding, only open to community groups for their area. Daily maintenance/monitoring, pride of place, eyes on the ground. | The project and subsequent IAP, will give guidance and measures for applying for project funds, small scale actions. A plan in place to improve all identified areas. |
| Gardaí | Have to monitor the area as an anti-social hotspot. | Patrol the area. Provide advice/guidance | The project will help address anti-social behavior with increased footfall , will open up the permeability of the area |
| Parks | Work in the area regularly around maintenance and grass cutting. | Familiar with the locality, improve the areas under their remit. | Increased footfall and a decrease in anti-social behavior from project activities should result in easier maintenance of the sites |
| Cleansing/street cleaning | Active in these areas daily | To see improvements in the areas under their remit | Increased footfall and a decrease in anti-social behavior from project activities should result in easier maintenance of the sites |
| Landowners (businesses , multi-story carparks) | Interest in the areas. Land/property ownership. Commercial value | Could look at promoting a positive green image, pride of place, local enhancements | Increased footfall could lead to less anti-social behavior. Greening the area could improve the value of land holdings. Positive image |
| Paul Partnership | Delivery agency | Works in low socio economic areas, supports/funding | Improvement in a low socio economic area of the city as a result of the project. Enhanced work plan, greening, footfall, tourism. |
| Mary Immaculate College | Historical Old City Wall | Learning opportunities , knowledge sharing | Potential for partnership around students and project works |
| LCCC Arts Office | Creative role in helping local communities | Grants for art opportunities, ie murals, art installations | Connect with all socio demographics , enhance their network and scope of works |
| LCCC Tourism Office | Creative role in helping local communities | Increase footfall / promote | Enhancement of the area will add to the cities tourism sites |
| Sports Partnership | Supportive role in helping communities | Recreational opportunities, grant funding available | The project will help to increase the objectives for the active cities plan |
| Active Travel | Supportive role in helping communities | Grant funding available | Project will increase permeability and opportunities for walking/cycling |
| Sláintecare Healthy Communities Local Development Officer | Supportive role in helping communities | Funding available, works in low socio economic areas. | The project will provide an IAP that will provide guidance on actions to be delivered and enhance the area. |
| Climate Officer | Supportive role in the community | Funding available for green projects | Enhancing areas and making them more resistant to climate change, creating a plan to green areas. |
| LimerickCity Tidy Towns | Active community role | Improve the area covered by their tidy towns remit | Project will help to clear up a litter blackspot in the city through the IAP and its actions |

THE POWER-INTEREST MATRIX



Stakeholder Influence Matrix

STAKEHOLDERS ECOSYSTEM MAP



Stakeholder Ecosystem Map

The stakeholder ecosystem map and stakeholder analysis table provided further assistance in highlighting the interests of the stakeholders and how they might deliver for the GreenPlace project. These tools greatly assisted with the identification of Stakeholders that were essential to the delivery of the IAP and those stakeholders that could benefit from the GreenPlace project, therefore harnessing their interest to stay involved in the project. The process allows and ensures full collaboration with the various stakeholders where the project can achieve mutual benefits for all stakeholders.

3.5.1 ULG Methodology

The ULG meetings follow the project timeline, objectives and activities as outlined by the Lead Expert. Each meeting has an agenda and minutes are provided thereafter. The ULG meetings follow the methodologies and tools for facilitation as outlined by the Lead Expert and the Lead Partner.

We ensure learning from the transnational network activities is shared with the ULG members for the co-production of the IAP. In order to ensure the delivery of the IAP, a risk analysis was undertaken to identify and determine the risks that would prohibit the delivery of the IAP for the project.

Potential risks and mitigation measures identified for the ULG process are detailed in the table below.

| Risk | Mitigation strategy |
|--|--|
| Lack of political support | Keep elected members briefed on project progress to keep interest and support alive. |
| As the project progresses, ULG members may become disinterested or less involved in the project. | Need to ensure that we are focused on stakeholder’s areas of interest and that from the interest matrix that the high interest stakeholders are identified that will want to highly involved in the project. |
| Over expectation of project deliverables | Meaningful communication with stakeholders from the start on deliverables, be clear that it is a policy document, not capital works in order to manage expectations |
| Project staff changeover | Keep a strong project core team. Ensure monthly meetings take place with core team and all meetings are minuted and filed. |

Risk Analysis

3.5.2 Co-Identification of Local Priorities

The focus for the IAP is on a section of Irishtown and its environs, making the area more usable for residents, encouraging footfall along the City Wall both inside and out, creating links between the different areas, making it part of the local tourism strategy and a possibility to increase green coverage in the city, via green corridors.

The main URBACT tool the “Problem Tree” was used to identify the key issues at the project locations and to identify solutions in how these issues could be resolved in the IAP for the project. The issues highlighted and possible solutions are presented in the Problem Tree below and summarised in the table.

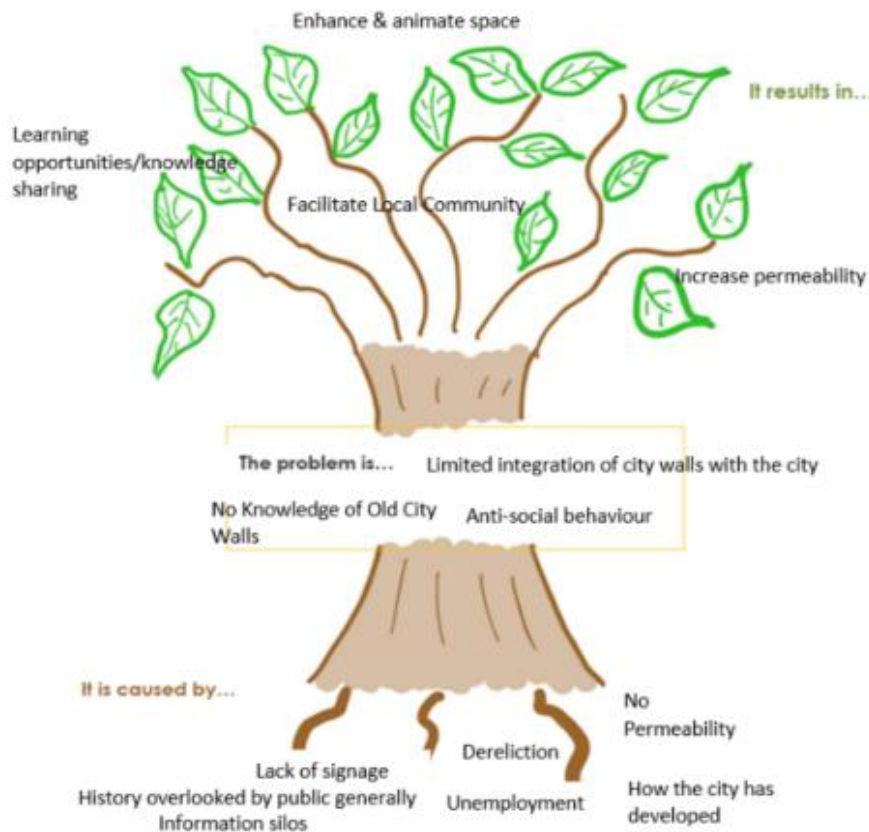


Figure 5 The Problem Tree

| GreenPlace (Problem Tree) City Walls | | |
|---|---|--|
| Problem... | Caused by... | Solution... |
| Anti-social behaviour | <ul style="list-style-type: none"> Unemployment Dereliction No permeability | <ul style="list-style-type: none"> Increase permeability and opportunities for walking/cycling Connect with existing green spaces Increase passive surveillance and footfall, upgrade signage Revitalise areas for the community Collaborate on issues such as maintenance/monitoring |
| Limited integration of city walls with the city | <ul style="list-style-type: none"> How the city has developed Lack of signage, and/or map of where the walls are/were | <ul style="list-style-type: none"> Enhance perceptions and connection with the city walls Enhance and animate spaces leveraging on established networks of artists across the city. Learning opportunities, knowledge sharing, <u>evidence based</u> study and publications Identify and map areas Multifunctional areas for art, dining, theatre, and green infrastructure (walls/roofs, biodiversity) |
| Limited knowledge and awareness of Limerick's history | <ul style="list-style-type: none"> Information siloed/fragmented History overlooked by public generally | <ul style="list-style-type: none"> Align with relevant recommendations from the Limerick city walls conservation and management plan (2008) Increase awareness of the walls and their history Show potential for 'sense of place' for citizens, tourism, that complement existing works being carried out to restore the old walls Enhance areas and making them more resistant to climate change Facilitate local community groups to deliver events linking with the walls (dance, theatre, biodiversity, culture, history and archaeology) |

The initial consultation with the ULG and outcomes from the meetings with the ULG group resulted in the below SWOT analysis table detailing the local challenge and priorities.

| | |
|--|--|
| <p style="text-align: center;">Strengths</p> <ul style="list-style-type: none"> ○ Area of high historical significance for Limerick, located in the heart of the city ○ Extension of previous URBACT Health and Greenspace Project ○ Good residents association support and relationship with Local Authority ○ Strong support for the project within the local authority within other Council departments | <p style="text-align: center;">Weaknesses</p> <ul style="list-style-type: none"> ○ No budget for future works ○ Poor connectivity/access/ barriers to movement ○ Land ownership issues ○ Perception of area being unsafe? |
| <p style="text-align: center;">Opportunities</p> <ul style="list-style-type: none"> ○ Enhance the green spaces and create functional areas for additional uses like recreation opportunity for performance venue for local dance school ○ Opportunity to add to tourist trail to incorporate old Medieval City Walls of Limerick ○ For increased informational signage to raise awareness of history of the area ○ Promote the space as a linear park for promenading which was one of its historical functions | <p style="text-align: center;">Threats</p> <ul style="list-style-type: none"> ○ Anti-social behavior , vandalism, crime ○ Litter ○ Maintenance of the green areas, need to be cut on a regular basis, this has not been the case ○ Area needs to be maintained on an operational schedule, as opposed to reactive maintenance of the area ○ Is the area ready for community connections, sense of place through use of a shared space ? ○ Funding |



Figure 6 ULG meeting Merchants Quay

3.5.4 Co-Created a Vision for GreenPlace

Further meetings and consultations with the ULG group led to discussions on a vision for the project area. A number of common goals were identified for the Irishtown area:

- Increasing the green potential of the wall
- Getting rid of unsafe perception
- Developing community-led recreation activities
- Augmenting the touristic potential of the wall

This led to ideas being put forward for the project with the vision emerging as:

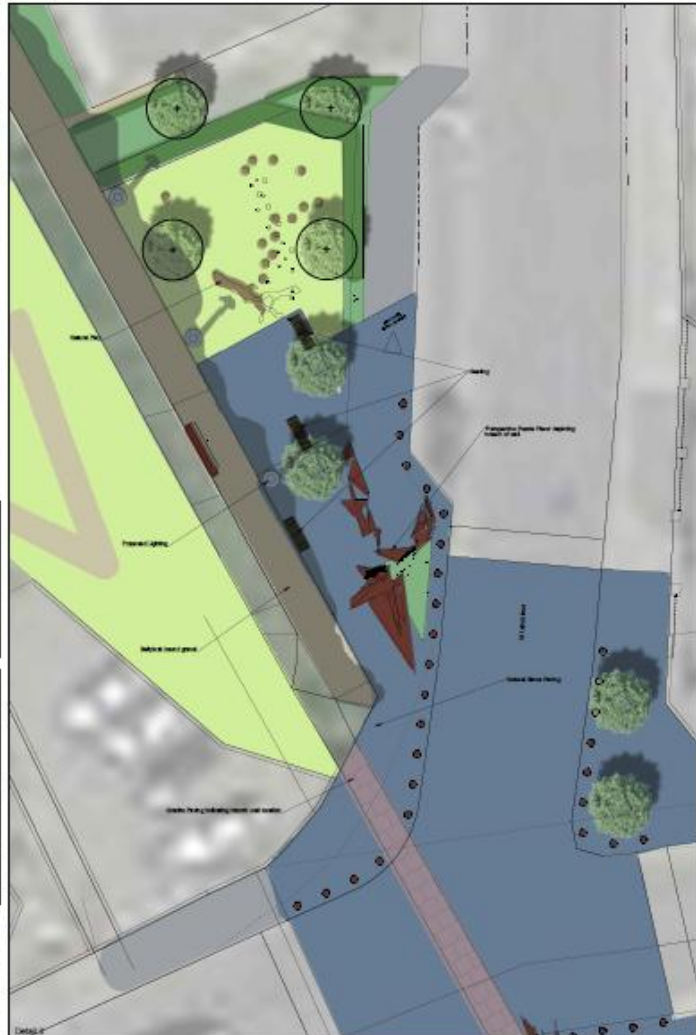
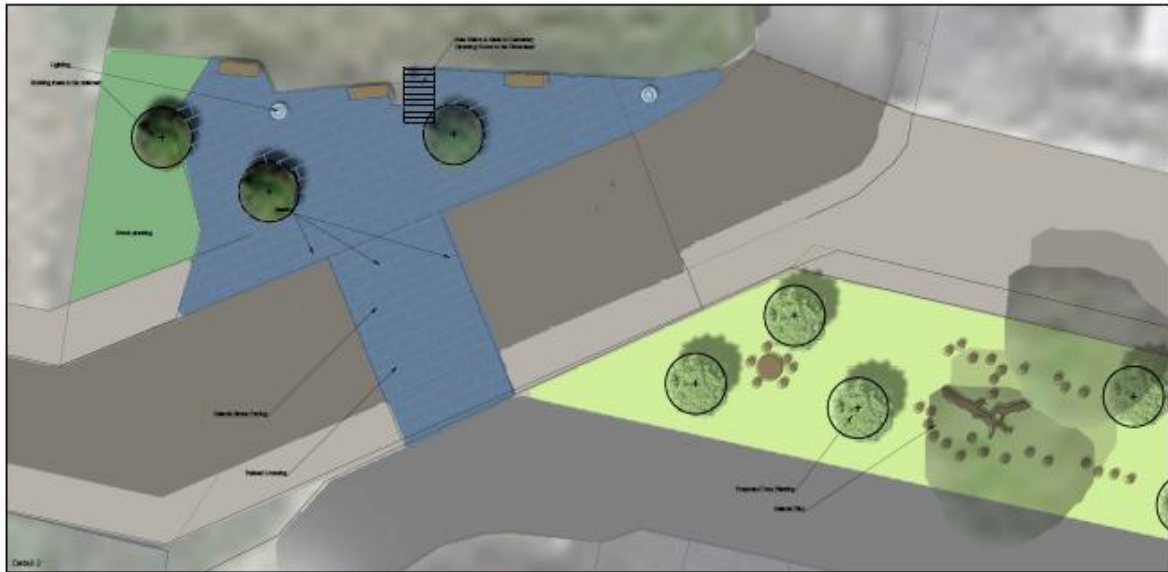
VISION – “restoring the visibility and accessibility of the City Wall and its forgotten surrounding areas as a source of local heritage and pride, green spaces, natural habitats and community engagement”

Among some of the suggestions were the installation of a pergola on the line of the wall on Old Clare Street where the wall is no longer visible. The pergola would mimic the height and depth of the wall with informational signage provided to inform of its heritage. A landscape plan was prepared to illustrate this. In addition, other suggestions were to provide gardens and green space at the Grattan Court area and linear walkways along the line of the City Wall, thereby removing barriers to movement along the wall. Other suggestions were high quality public realm and materials along the entire project area to improve the visual impact in these areas and encourage footfall. The use of art work was also suggested for a number of key areas and are as shown on the landscape design. Communities would also benefit from the physical improvements in the area and avail of the amenity green spaces and potential for physical activity.

The ideas and themes can be broadly summarised as follows :

- Provide spaces for recreation, education and connection with the Limerick’s city walls for local residents and wider community
- Animate existing greenspaces through activities such as community interest walks, pop up food markets stalls and music, inclusive programmes and events, and culture related and place-based workshops
- Raise awareness among residents and professionals as to the benefits of combining heritage for health prevention, overall wellbeing, and promoting active lifestyles
- Raise awareness of biodiversity, monitoring and evaluating habitats alongside areas of historical interest.
- Promote climate adaptation and mitigation while aligning with the preservation and conservation of historical places.

| Theme | Action |
|--------------------------------|--|
| Community engagement | To ensure the relevancy of the project to Limerick citizens overall |
| History/memory of a place | To ensure the relevancy of the project to Limerick citizens to engage with the chosen spaces for this project |
| Green infrastructure (NBS) | To ensure the relevancy of the project to Limerick citizens and aligning with policy documents already set out by government/local authority |
| Biodiversity | To ensure the relevancy of the project to Limerick citizens and their expectations |
| Climate adaptation, neutrality | To ensure that actions within the IAP are relevant to Limerick citizens’ long term |



St Lelia Street & St Michael Graveyard

| | | | |
|--------------|--|----|--|
| Project Name | St Lelia Street & St Michael Graveyard | | |
| Client | Limerick City & County Council | | |
| Scale | 1:100 | | |
| Author | AD | EC | |

3.5.5 Main Integration Challenges

The project benefits from support from elected representatives with an elected member on the ULG group and the Mayor was present at the partner visit of the Lead Expert at the initial stage of the project. For political buy in, the project should demonstrate that there is potential for economic benefit and to help rejuvenate the Irishtown area of the city. Political buy in was identified as one of the main risks for the project and this is being addressed by briefing the City Elected Representatives on the progress and potential outcomes for the project.

The Limerick local authority team is used to working in an integrated way – be it in terms of sectoral integration or horizontal integration, as it has been part of our practices for decades now. As the project progressed, additional horizontal integration was identified and these stakeholders were approached to join and/or support the project, i.e St Johns Hospital, Paul Partnership and the third party land owners, Focus Ireland, Eurocarparks and Chester Developments. Separate meetings were held with these third party landowners in order to gain support for the project and reach agreement on access details and future ownership of the areas that are required in order to achieve full permeability of the project area. A research student was placed with LCCC from Mary Immaculate College, one of our local partners to help research the history of Irishtown in conjunction with the Local Authority Archaeologist. As a long-standing member of the Irish Walled Towns Network, LCCC could reach out to other Irish walled cities, to identify similar actions in their cities. St John's Hospital were particularly keen on the project as a substantial section of the City Wall is contained within their boundary and discussions were held on how connectivity could be enhanced between adjacent sections of the City Wall.

One of the main challenges for the project was to resurrect connection of the residents with the City Wall and this led to the identification of the testing actions for the project in the form of a series of community engagements. Three events were held as part of the testing action. It proved very challenging to attract residents from the various communities to come along to the events. It became clear that residents were living in fear in some parts of the communities as a result of significant anti social behaviour down through the years resulting in only a few people attending the first event. However, they were delighted to be asked to help plant trees in their area which greatly improved their areas and they were also delighted to be asked about what they would like to see happen in their area. The second event, "Medieval May Fair" was held on the other side of the Wall from Johnsgate and only residents from this side of the Wall attended this event. It became very clear that communities either side of the City Wall did not mix due to fears of intimidation and anti social behaviour. Residents in this area were not aware of the historical significance of the City Wall, which was located outside their front doors and they started to take an interest and participated in a tour of the history of the City Walls by the Council's Archaeologist. They were also asked for ideas on what they would like to see in their area that could be included into the plans.

The challenge for the third event was to try and integrate most communities and residents who lived in close proximity to areas of the City Walls. A more neutral location on Old Clare Street was chosen where a street festival was planned, Irishtown Heritage Fest. This led to a greater level of communication and a different approach for this event where more child like activities were organised in the form of face painting, balloon artist and also sports for children was held by our local partners, Limerick Sports Partnership. This allowed children to come out and participate in events and also encouraged parents to come along and hear about the URBACT GreenPlace project and to input into the decision making process around proposals for their areas where landscape designs were on display. The inclusion of an ice cream van was very popular for both children and parents and created an atmosphere for engagement in a light hearted way. The residents and public were taught how to dance the set dance "The Walls of Limerick" with traditional music provided by Garryowen branch of Ceoltas Ceoltoiri Eireann. This created an opportunity for residents to mix together, who might otherwise have not mixed. This event was quite successful and it is the intention that this will become an annual event with the objective of increasing number of attendees every year and eventually expanding to a weekend "Dancing the Walls of Limerick Festival"

3.6 Testing Actions

A number of testing actions were carried out to gauge interest in the City Walls and to receive comments and feedback on what the residents in the area would like to see included in their area in Irishtown.

Testing Action 1

On the back of the City Wall at Johnsgate site, LCCC would seek to carry out soft activities to reduce anti-social behaviours via the organisation of social events and provide a walk-way along the inside of the wall.

National Tree Week – Tree Planting March 2024



Testing Action 2

On the front of the City Wall at Grattan court, LCCC would seek to move away from the current tarmac and lack of recreation space to revitalise it as a green space and provide a walkway along the outside of the city wall. A landscape drawing has been created to demonstrate potential in the area for greening and increased permeability.

Medieval May Fair – May 2024



Testing Action 3

Moving out into Old Clare Street, there are opportunities to delineate the wall and to enhance the public realm by providing a green lung beside the line of the city wall.

Irishtown Heritage Festival – August 2024



3.6.1 Testing Action Social Events

The purpose of the testing actions was to make connections with the community, the inhabitants of Irishtown by using the Old City Walls as a neutral factor to engage. A number of fun filled events was carried out to increase activity in the area around the standing section of the wall in Johnsgate/Grattan Court and the Clare Street areas to increase footfall/movement. These are soft measures to look at helping to reduce anti-social behavior via the organisation of social events. The most important aspect of these events are citizen participation and cultural heritage. As part of National Tree Week in March 2024, the community in Johnsgate came together and got hands on experience planting some native Limerick heritage apple trees, creating a mini orchard in their area. This was a very successful collaborative event between the Local Authority and the residents association. The event was well attended with the residents association promoting the day with a leaflet drop to neighbours well in advance. Young and old came out on the day to help dig, get their hands dirty and plant fruit trees for their community. Participants were asked how they felt in the space during the tree planting activity, some of the responses were: amazing, great, new beginnings, back to life.

A Medieval May Fair was held in May 2024 on the Grattan Court side of the City Wall. The rationale behind holding the May Fair was to gauge interest and the level of existing knowledge among the community about the wall. This was a child friendly community event, with medieval pop up re-enactors, sword play, music, theatre, face painters and historical walks/talks. A leaflet drop was carried out in the Johnsgate, Watergate, Grattan Court area and surrounds to notify residents and raise awareness of the event. Questionnaires were handed out to attendees to obtain feedback on their wishes and needs of the local community. LCCC hoped through these social events to receive ideas for the project that reinforce community buy in for future events. It was an opportunity to explore how and what way future events like this could enhance the community's connection with the City Wall.

Limerick City and County Council proudly presented the Irishtown Heritage Festival on Sunday August 25th as part of National Heritage Week. It was a community street party as the third local social testing actions on Old Clare St, Irishtown. The Festival was organised with the hope of getting more of the community to come together and break down barriers. The two previous social events had not achieved this. The results of the smaller testing actions demonstrated that something on a larger scale was required to try to achieve the desired outcome. It was an opportunity to get vital feedback from the community on local issues. A neutral more visible space allowing for the potential for a greater mixed attendance, a higher footfall, an opportunity to hear more of the community voices. The testing actions had to evolve and build on previous social events on a greater scale to allow groups in the area to mix. The larger social testing action offered a chance to help revive and create a link between those living in the area and the history of the area. All were invited to join and take part in a fantastic street party on Old Clare Street. Leaflet drops to residents, posters on the street and advertisements on the radio heralded the Heritage Festival. A road closure was put in place to allow the area to be pedestrianised with a long row of tables and chairs now taking centre stage in the streetscape. Residents were invited to come, bring food, sit and eat with their neighbours. Planters with established trees that doubled as seating were moved into the area to function as seating but also help green the space. Colourful lengths of bunting were hung diagonally across the street. ULG member Limerick Sports Partnership organised street games for the children, archery, hockey, tug of war, an opportunity to play in a car free environment.

The Garryowen Comhaltas Ceoltoiri Eireann were a highlight of the festival, playing traditional Irish music. Members of the public were invited to learn the set dance "The Walls of Limerick". Workshops were held to teach people the dance, culminating in the whole group coming together to dance as one. It was fantastic to see people from so many cultures, demographics drawn out of their houses by the music, sitting together, enjoying the event and then participating in some traditional Irish dancing. One of the key actions from the Limerick integrated action plan is to delineate the line of the Old City Wall, where it is no longer standing. This was trialed at the Heritage Festival using non-permanent paint. Bringing history to life by simply painting the surface of the street, demonstrating to all where the Old City Walls once proudly stood, protecting the city. Children took turns painting the sections to complete the tribute to the City Walls of Limerick.

Residents and members of the public had an opportunity to view exciting plans for the area, three large AO print landscape drawings were on display to show potential changes to enhance the area. Items including a

pagoda to both green the area but also to display the height and width of the wall where it no longer stands. A number of natural play areas and planting sites have been identified for the area. The removal of tarmaced areas to give garden space back to residents and to allow room for sports. Comments were welcomed from those who attended, using a novel approach for gaining feedback demonstrated by one of our GreenPlace project partners, a clothes line was hung on the street where people could write their thoughts on colourful pieces of card and then peg them on the line for all to see. Some key feedback from the event centred on a need for more spaces for play. The area is too great a distance from the other city parks and needs its own dedicated play space. That people living in the area would like to see names for streets/places returned to the old historical names from their youth.

Overall, key details of issues on the ground were highlighted for our target areas that were subsequently built into the integrated action plan. A number of lessons were learnt:

- It was difficult to get different communities within Irishtown to mix outside their own individual area but themes like music, dance help people come together.
- Regarding digitisation, our testing action demonstrated this is an area lacking in Irishtown, a greater level of communication and information boards are needed to display the history for locals and tourists alike.
- An annual event will now be held to celebrate the historic Medieval Wall of Limerick in Irishtown building on the great success of the GreenPlace Heritage festival.



Figure 8 Medieval May Fair poster



Figure 9 Heritage Festival



Figure 10 Dancing the Walls of Limerick



Figure 11 Traditional Music

3.6.2 Testing Action Table

| Testing the interest in the Old City Walls and Measures to Enhance the Project Area. | | | |
|--|--|---|--|
| <p>Summary of the action</p> <p>Some key objectives for the Limerick team in the GreenPlace Project are to increase the green potential of the wall, to remove the perception that the area is unsafe and to augment the tourist potential of the wall.</p> <p>LCCC are working to make connections with the community using the Old City Walls as a neutral factor to engage, the inhabitants of Irishtown. Our actions are a series of planned activities and a landscape design, soft measures to look at helping to reduce anti-social behavior, increase footfall and promote permeability. A Tree Planting Day was held as part of National Tree Week in March. In May, we held a Medieval May Fair to celebrate the Old City Walls, which included a guided walk/talk by the Council Archaeologist. A Street Feast as part of National Heritage Week in August, where the road was closed to traffic and we invited all residents of Irishtown to come together, to celebrate their area and their history. We hope through these social actions to receive ideas for the project that reinforce community buy in for future events. It is an opportunity to explore how and what way future events like this could enhance the community's connection with the Old City Walls and guide the design of the project area.</p> | Action owner | <i>Limerick City and County Council</i> | |
| | Link to specific objective(s) | To increase the green potential of the wall, to remove the perception that the area is unsafe and to augment the tourist potential of the wall. | |
| | Action readiness | Work in progress | |
| | Timescale | 01/03/24 – 31/08/24 | |
| Finance and resources | | | Main stakeholders |
| Amount needed | Source | Status | <p><i>Limerick City and County Council – lead partner – working with colleagues across Public Realm, Arts, Tourism , City Archeologist, Housing , Active Travel, Roads. Residents Association, support on the ground to reach local community and carry our leaflet drops.</i></p> <p><i>Mary Immaculate College, research co-op student to work on history of the wall and support project.</i></p> |
| Approx. 5,000 -6000 euro | URBACT Budget Residents Association Municipal Budget National Grants National Government – Heritage Council | Not identified yet | |
| Integration | | | |
| Type of integration | Approach to ensure the action will be integrated | | |
| Sectorial integration | We will ensure that environment, economic, social, and cultural concerns are considered by having a comprehensive ULG group, made up of key stakeholders identified from our analysis table and to keep them engaged in the process at our ULG meetings. We will have ULG members present at meetings on aspects of the project they are involved in and what they can gain from the project. We will ensure there are no negative effects by giving everyone time and the opportunity to contribute and by managing expectations. | | |
| Horizontal | We will ensure that all relevant partners , multiple departments across Limerick City and County Council (stakeholders from the public, private, NGO, academic, civil society etc. sectors) are involved by having a comprehensive ULG group, made up of key stakeholders identified from our analysis table and to keep them engaged in the process at our ULG | | |

| Testing the interest in the Old City Walls and Measures to Enhance the Project Area. | | | |
|--|---|---|---|
| | meetings. We have consulted with initial ULG members to identify any organisation missing from the group that should be involved and this has led to further key stakeholders from other organisations being invited to join the project. | | |
| Vertical integration | As the project is based around a protected structure, key government departments over Heritage will be contacted to ensure compliance and support for the project. | | |
| Territorial integration | All neighborhoods in Irishtown are invited to take part, via leaflet drop and door to door interaction and through social media. The project has no effect on neighbouring counties. | | |
| Soft hard investments | We will combine investments for both soft and hard activities, by holding a number of community fun days and by looking to implement some of the elements from the landscape design, such as the green pagoda and signage. | | |
| Cross-cutting themes | | | |
| Theme | Approach to ensure the action will be address this theme | | |
| Environment | We will ensure that our action has a positive environmental impact by keeping single use items to a minimum. By having a leave no trace mentality at all organised events. By only planting native Irish trees/flowers, with emphasis on biodiversity benefits. | | |
| Gender | We will ensure our action is accessible to all, in terms of gender and/or disability by choosing sites for events with easy access on flat surface. Highlight public transport routes. Used mixed social media, such as online and newspaper print to advertise events. Consult with colleagues in departments such as age friendly Limerick to ensure event is inclusive. Have both male and female staff on site at events. Look to increase lighting in the area. Look to remove any barriers to movement that create dead ends | | |
| Digital | Not a factor yet, but some ideals being considered are QR codes, interactive displays. We look at best practice examples from the network. | | |
| Risks | | | |
| Risks | Likelihood | Impact | Mitigation measures |
| Anti-social behaviour | Possible | Disturbance of event | Notify members of community gardai so they can be a presence if required. Have adequate number of staff on hand for each event. Ensure residents know when events are taking place. |
| Weather | Possible | All events are outdoors, weather is a factor, could influence numbers attending and events on the day. | Provide shelter for events, marque tent. Ensure suppliers/activities have some measure of shelter when sourcing. |
| Litter/dog poo | Possible | A lot of activities are in proximity to a grass area, housing estate and there can be a buildup of rubbish/dumping, food waste, mixed rubbish, this will interfere with those enjoying the day and cause a hazard through smell, slips/falls. | Ensure cleansing have inspected the site prior to the event and any and all rubbish/ dog poo is removed. Alert resident to the fact an event is taking place in this space. |
| Traffic | Possible | Someone might be injured by cars/traffic | Ensure road closure if needed, and traffic management with barriers etc. |
| Crowd control | Possible | Crush injuries, uncomfortable if overcrowded | Risk assessment carried out for all events, MC and portable PA |

| Testing the interest in the Old City Walls and Measures to Enhance the Project Area. | | | |
|---|--|--|--|
| | | | system in place to help direct people. Designated stewards. |
| Lack of social cohesion/interaction among the different Irishtown community groups | Possible | Different areas not mixing and enjoying the social events and providing feedback. | Host events in multiple areas, and in neutral areas, such as the road/street party. Events for all of Irishtown community. |
| Activities | | | |
| Activity | Dates | Outputs | Problems and concerns |
| Tree Planting for National Tree Week 2024. Planting of 6 Heritage Limerick Apple Trees. | March 2024 | Mini orchard for residents, community planting together collaboration with residents association. Residents gave feedback on how the event made them feel. | <i>Vandalism , attendance numbers, litter/dog poo, Weather</i> |
| Medieval May Fair Celebrating the medieval walls of Limerick with a family fun day. | May 25 th 2024 | Connections with the community using the Old City Walls as neutral factor to engage. Guided historical walk/talk on the walls by the City Archaeologist. Participants filled in a questionnaire and were asked to give feedback on the wishes, wants, and needs of the local community and the level of interest/knowledge in the City Walls. Medieval actors from King Johns Castle, with weaponry display and music/theatre. Games with Limerick Sports Partnership. | <i>Anti-social behaviour , attendance numbers, litter/dog poo, weather</i> |
| Street Feast , National Heritage Week | August 2024 | Road Closure. Community party Possible display by Dance Limerick , dancing the Walls of Limerick on the Walls of Limerick Guided Historical Walk/Talk Include landscape design and request feedback. | <i>Anti-social behaviour , attendance numbers, litter/dog poo, weather</i> |
| Monitoring | | | |
| Outputs | | | |
| Indicator | Monitoring mechanism | | Target |
| | Headcount, use clicker on the day to count numbers. The traction on social media, likes, views. | | Residents/businesses of Irishtown |

| Testing the interest in the Old City Walls and Measures to Enhance the Project Area. | | |
|--|---|-----------------------------------|
| Attendance , demographic, Social Media output | Research co-op student could interview people at the event to get feedback. <i>Survey/questionnaire</i> | |
| Results | | |
| Indicator | Monitoring mechanism | Target |
| If numbers increase for each event. If groups mix in the area. If knowledge increases The wall becomes an event space | <i>Survey/questionnaire</i> | Residents/businesses of Irishtown |
| Number of tourists increase | Counters | |
| Barriers to permeability are removed | | |



Figure 7 Painting the line of Old City Walls



4.0 Overall Logic and Integrated Approach

In keeping with the vision for the project, the following outlines a series of strategic objectives with associated specific objectives across a number of intervention areas in order to deliver on the vision for the project. This has resulted in a series of actions for each of the specific objectives that once delivered, will achieve the vision of the project.

VISION – “restoring the visibility and accessibility of the City Wall and its forgotten surrounding areas as a source of local heritage and pride, green spaces, natural habitats and community engagement”

The strategic objectives and intervention areas have been determined by problems identified in collaboration with the URBACT Local Group and identifying actions that will address these issues.

The strategic objectives are broadly based around alleviating the problem of anti-social behaviour, promoting awareness of the Old City Walls and integrating them back into the lives of people living in the area and back into the culture and heritage of Limerick City.

Strategic Objective No 1 - Restore the visibility and touristic potential of the Old City Walls

Strategic Objective No 2 – Harness and increase the use of multi-functional green spaces

Strategic Objective No 3 – Reduce anti-social behaviour around the wall

Strategic Objective No 4 – Support natural habitats around the wall

4.1 Intervention Areas

A number of intervention areas were considered across these strategic objectives that would result in a number of actions to be delivered for the respective objectives. These intervention areas are:

- Physical interventions to restore visibility of the wall
- Physical interventions to enhance usability and accessibility of green spaces
- Activities/Events to create awareness of the City Wall

An integrated approach towards a triumphant journey to become a space reclaimed for heritage, recreation, education and which demonstrates the connection with the history of Limerick for local residents and the general public alike was developed to achieve this vision for Irishtown, a location that had been lost to the local community for many years due to anti-social behavior and seclusion.

Tourism/Heritage

Nature/Greening

Social/Community

LCCC and its stakeholders have identified a number of actions that will work to create new linkages and permeability by breaking down barriers to access and creating an inclusive amenity walkway and greenspace for all, along the line of the City Wall while restoring the heritage of the Medieval City.

4.2 The Strategic Objectives

Strategic Objective 1

Restore the visibility and touristic potential of the City Walls of Limerick

| Specific Objectives | Actions | Outputs | |
|--|---|---|--|
| A. Increase access in the area | 1. Provide quality public realm, to include pathways and connectivity to City Centre. | Increased permeability in the area, leading to increased footfall. | |
| | 2. Remove barriers, fencing and allow full access. | Gates and fences removed. | |
| B. To delineate the line of the Old City Walls | 3. Installation of pagodas at specific locations on Old Clare Street and Watergate | Installation of lengths of pagoda. Area visually improved by the addition of the pagoda planting. | |
| | 4. Distinct purple paving slab installed at specific locations | Installation of lengths of purple paving slab. | |
| | 5. Install hallograms at specific locatons as per design drawing. | Clarity on the location of the Old City Walls in the sections it is no longer standing. | |
| | C. Promote heritage of Irishtown Old City Walls | 6. Provide wayfinding and interpretive signage at specified locations | New signs to be installed. |
| | | 7. Create tourist trail map of Old City Walls and Irishtown | Map designed, printed and distributed. |
| | 8. Collate historial information from the area and display in Gratten Court. | Interpretive signage installed. | |
| | 9. Install historical street furniture and bollards | Street furniture installed as per design | |
| | 10. Organise guided tours | Weekly tours to be provided. | |
| | 11. Historical art installations | Art installed at specified locations. | |

Strategic Objective 2:

Harness and increase the use of multi-functional green spaces around the City Wall.

Specific Goals

D. Provide area for recreation and play.

Actions

12. Remove storage sheds to provide playground space in Watergate.

13. Redevelop existing multi use games area in accordance with community needs.

14. Provide natural play spaces in designated areas.

15. Provide recreation space in Gratten Court, basketball & sports

E. Increase the level and access to green infrastructure and make inclusive to all.

16. Provide additional pedestrian access to St.Michaels graveyard green space.

17. Provide additional tree planting/greening at specified locations.

18. Green walls to be planted on car park and apartment building walls.

19. Window planter planting - educational hands on workshop for Watergate Flats community

20. Section of tarmac to be removed in Gratten court to provide garden space for residents.

21. Rain gardens to be installed at specified locations

Outputs

Storage sheds removed and green space enhanced for play.

A functioning multi use games area provided for the community.

Additional activities for young people created.

Recreation space provided.

More functional green space provided for local residents.

Opportunity to spend more time in nature.

Green walls planted.

Visual enhancement of the area.

Green space and gardens created.

Rain gardens installed.

Strategic Objective 3:

Reduce anti-social behaviour around the City Walls

Specific Goals

F. Increase footfall in the area.

G. Address perceived unsafe environment

Actions

22. Programme of events to be carried out throughout the year/annual basis, such as Heritage Festival, Halloween event, movie screenings.

23. Advertise/communicate tourism trail and heritage of Old City Walls

24. Create social spaces, seating etc

25. Provide adequate public lighting

26. Frequent patrols by the Gardai

27. Caretaker to be put in place for Watergate Flats

28. Ensure high standard of maintenance

29. Develop educational awareness around waste management

30. Provide support to the community to arrange community workshops, volunteer programmes

Outputs

A minimum of three events carried out throughout the year.

Social media posts to be created related to the Irishtown area and its heritage.

An increase in public interest/awareness of the space and its attractions.

Area is now more brightly lit.

To be patrolled on a daily basis

Caretaker to be put in place in 2026

Area is visually improved

Community have better understanding of waste management.

Support provided by Paul Partnership.

4.3 Action Table

| Action | Owner | Cost | Timing |
|--|---------------------------------|---------|-------------|
| 1. Provide quality public realm throughout extent of project to include pathways and connectivity to city centre. | LCCC | Unknown | Medium term |
| 2. Remove barriers to allow permeability including fencing/gates and allow full access. | LCCC, Gardai | Unknown | Medium term |
| 3. Install pagodas at specific locations to mimic size of City Walls as per design drawings. | LCCC | Unknown | Medium term |
| 4. Install purple paving at specific locations to indicate and highlight former location of City Wall as per design drawing. | LCCC | Unknown | Medium term |
| 5. Install holograms at specific locations indicated on the design drawings to provide tourists with history information of the City Wall. | LCCC | Unknown | Longer term |
| 6. Provide wayfinding and interpretive signage along the route of the City Wall at locations identified and shown on the design drawings. | LCCC | Unknown | Medium term |
| 7. Create tourist trail map of City Walls within the Irishtown area, highlighting areas of particular interest. | LCCC, Tourism | Unknown | Medium term |
| 8. Collate historical information retrieved for Old Clare Street and display on signage in Grattan Court. | LCCC ,Mary Immaculate College | Unknown | Short term |
| 9. Install appropriate historical style street furniture and bollards along the extent of City Wall route as per design drawings. | LCCC | Unknown | Medium term |
| 10. Tourism department to organise guided tours once public realm aspect of project is completed. | LCCC, Tourism/Discover Limerick | Unknown | Medium term |
| 11. Install art installations with historical themes in identified locations including murals on buildings in Grattan Court. | LCCC, Arts Office | Unknown | Medium term |
| 12. Remove storage sheds in Watergate to create permeable links and to provide recreational amenity space with input from residents. | LCCC, Housing, Residents | Unknown | Short term |

| | | | |
|--|---|---------|-------------|
| 13. Redevelop existing multi use games area MUGA and playground in Watergate in accordance with community needs. | LCCC, Residents | Unknown | Short term |
| 14. Provide natural play spaces in a number of locations along the route of the City Wall as per design drawings. | LCCC | Unknown | Medium term |
| 15. Provide recreational space for ball sports in Grattan Court as per design drawings. | LCCC, Residents | Unknown | Medium term |
| 16. Relocate entrance gate to Eurocarparks further eastwards and create public road and new pedestrian access to St Michael's Graveyard as per design drawing in order to allow public access to City Wall adjacent to Mungret Street. | LCCC, Euro car parks, Roads department | Unknown | Medium term |
| 17. Install trees and planting at a number of locations along the extent of the project area as per design to increase greening, improve air quality and ensure climate resiliency. | LCCC | Unknown | Short term |
| 18. Consult with private car park companies and developers and agree walls to be designated as green walls and commence planting. | LCCC, Euro Car Parks, Chester Developments, Residents | Unknown | Short term |
| 19. Educate Watergate residents on community gardening and provide assistance to create their own window box planters to green and make improvements to the visual appearance of Watergate developments. | LCCC, Paul Partnership | Unknown | Short term |
| 20. Provide private gardens with boundary hedging for residents of Grattan Court by removing tarmac areas in front of the houses. | LCCC | Unknown | Medium term |
| 21. Provide raingardens at a number of locations as per design drawings | LCCC | Unknown | Short term |
| 22. Create a programme of events to be carried out on an annual basis, such as Dancing the Walls of Limerick Festival, Halloween event, movie screenings etc. | LCCC, Festivals & Events, Paul Partnership | Unknown | Short term |
| 23. Liaise with Communications department and ensure festivals and tourism trails are advertised. | LCCC, Communications department | Unknown | Medium term |
| 24. Ensure social spaces with seating are created in consultation with residents along the extent of the project area. | LCCC, Community Sustainment | Unknown | Medium term |

| | | | |
|---|--|---------|-------------|
| 25. Assess adequacy of public lighting and increase level of lighting if appropriate to do so and illuminate the City Walls at night. | LCCC, Roads department | Unknown | Medium term |
| 26. Liaison with the Gardai to ensure frequent patrols of Johnsgate, Grattan Court and Watergate areas and install CCTV. | An Garda Siochana LCCC | Unknown | Ongoing |
| 27. Housing Department to reinstate Caretaker for Watergate area. | LCCC, Housing department | Unknown | Short term |
| 28. Put in place a maintenance regime to ensure Johnsgate, Grattan Court, Old Clare Street and Watergate areas are maintained to a good standard. | LCCC, Housing, Cleansing, Parks | Unknown | Ongoing |
| 29. Develop an educational awareness process around waste management for Johnsgate, Old Grattan Court and Watergate. | LCCC, Community Sustainment, Environment | Unknown | Short term |
| 30. Provide support to the community to arrange community workshops and volunteer programmes | LCCC, Paul Partnership | Unknown | Short term |
| 31. Undertake to carry out a number of seasonal surveys on flora and fauna to compile baseline data for the project area. | LCCC, Environment | Unknown | Short term |
| 32. Undertake to carry out noise and air quality surveys to determine base line data for the project area. | LCCC, Environment | Unknown | Short term |
| 33. Organise and hold a Community Bioblitz to raise awareness of local flora and fauna. | LCCC, Environment | Unknown | Short term |
| 34. Undertake an ecological assessment of the project area and ensure design allows for ecological movement, i.e suitable lighting | LCCC, Environment | Unknown | Short term |
| 35. Assess green space along the extent of project area and provide additional green space as necessary to create a green corridor for habitat. | LCCC | Unknown | Short term |
| 36. Install bird/bat nesting boxes and insect hotels at appropriate locations as per design drawings. | LCCC, Environment | Unknown | Short term |
| 37. Alternate grass cutting regime for St Michael's cemetery to allow for areas of longer grass to promote biodiversity. | LCCC, Limerick Civic Trust | Unknown | Short term |

4.4 Integration of your Action Plan

| Integration | | | |
|-------------------------|---|--|--|
| Type of integration | What is covered? | What is missing? | How do you plan to address the missing elements? |
| Sectorial integration | <p>The IAP interventions focuses on a number of key areas around</p> <ul style="list-style-type: none"> • Tourism/Culture • Nature/Greening • Permeability • Recreation | Potentially around health/quality of life. | Potential to discuss more how interventions in the local area could improve their quality of life. |
| Horizontal | <p>There is strong participation in the local ULG group from several Departments across the Local Authority,</p> <ul style="list-style-type: none"> • Active travel • Active cities • Roads • Arts • Tourism • Healthy Limerick • Age friendly Limerick <p>3rd level institutions, Law enforcement Local residents groups Healthcare providers Landowners Local business</p> <p>The ULG group is open to all and as the project progresses new stakeholders are identified and invited to join</p> | <p>There can be a fall off in ULG members if the current phase of the project does not directly apply to them . It can be difficult to get this sector to reengage when required</p> | <p>To be more strategic in regards what local stakeholders are needed throughout the process and what stage they need to participate at.</p> <p>To clearly identify what benefits stakeholders will gain from partnering in the project and to have a clear picture of what they need.</p> |
| Vertical integration | <p>Will work with the Department and keep them informed on works around the protected structure of the wall to ensure compliance and support for the project.</p> <p>LCCC will keep the elected members aware of the status of the project at local area briefings.</p> <p>Elected members are invited to take part in all social events in the area.</p> | Greater level of attendance by the local elected members at social events. | Keep local elected members updated on the progress and next steps of the project |
| Territorial integration | All neighbourhoods in Irishtown are invited to take part. | To continue to try and engage those who have not participated to date | To continue to hold social events in the area, to establish an annual festival. |

Methods of communication include leaflet drops, posters, door to door interaction and social media.

Several on site social events to share plans for the area and encourage feedback.

Soft hard investments

A combination of investment for hard and soft activities.

Holding a number of social events, community fun days/festivals to share plans for the area and get feedback.

To help the community integrate and get to know their neighbours.

To increase footfall and tourism by removing barriers to movement. To increase the maintenance level in the area.

To source funding to reconstruct the hidden line of the Old City wall using a pagoda structure, to install signage documenting the heritage of the area.

To install additional lighting , planting , seating, inclusive walkways , traffic calming measures.

To discuss further with individual departments across the local authority and assign responsibility for who is best placed to apply for appropriate funding calls to build out aspects of the hard measures.

Meetings held as the project progresses to advance ownership of tasks

4.5 The URBACT Cross-Cutting themes in your Action Plan

| Cross-cutting themes | | | |
|----------------------|---|--|--|
| Theme | Approach to ensure the action will be addressed by this theme | What is missing? | How do you plan to address the missing elements? |
| Environment | <p>One of the key intervention areas/ focus for the project is on nature/greening.</p> <p>There are a number of measures including additional planting/mature tree planting.</p> <p>The project will support planting native Irish trees/flowers, with emphasis on biodiversity benefits.</p> <p>Ensuring a leave no trace mentality for all organised social events.</p> | <p>More specific nature based solutions</p> | <p>Will focus on as the project progresses.</p> |
| Gender | <p>To date all social events have been held in flat accessible areas.</p> <p>Free events and open to all.</p> <p>Well advertised through a mix of online and print media , as well as door to door interaction.</p> <p>Feedback from events in relation to lighting and there is a need for more lighting.</p> | <p>The embankment of the old city wall is not accessible for anyone with mobility issues.</p> <p>Not enough lighting.</p> <p>Barriers to movement , area is not perceived as safe.</p> | <p>Possibility to look at inclusive access to the embankment.</p> <p>Remove barriers to movement.</p> <p>Additional lighting in the area</p> |
| Digital | <p>Is not a factor yet, but is being considered as an option to enhance the history of the area.</p> | <p>The best way to incorporate it into the project</p> | <p>Will explore best practice examples from other networks.</p> |

4 Action planning details

5 Action 3: Installation of pagodas at specific locations on Old Clare Street.

| <p>Summary of the action Design and build of a number of pagoda structures on Old Clare Street. To indicate the line of the Old City Wall where there are no standing sections left. The goal is for the pagoda to be the height and width of the Old Walls,. The Pagodas will also add an attractive green element to the area and will be like a living green wall element.</p> | | | <p>Action owner LCCC</p> |
|--|---|---|---|
| <p>Link to specific objective(s)</p> | | | <p>Introducing greenery and creating an attractive feature to animate an urban area and to link back in with local heritage.</p> |
| <p>Action readiness</p> | | | <p>Work in progress</p> |
| <p>Timescale</p> | | | <p>1-3 years</p> |
| Finance and resources | | | Main stakeholders |
| <p>Amount needed</p> <p>Unknown in terms of monetary resources. LCCC Staff</p> | <p>Source</p> <p>Municipality, ERDF, National (Heritage Council)</p> | <p>Status</p> <p>Exploration</p> | <p>Who will be involved? To do what? → LCCC Archaeologist – to provide information on location/size pagodas & to apply for appropriate funding sources. LCCC Parks landscape and design officer – to provide detailed drawings and recommended planting scheme for Pagodas LCCC Roads Department – onroad parking will need to be removed to allow the pagodas be positioned LCCC Parks Department – to apply for appropriate funding streams and to maintain the pagodas</p> |
| Integration | | | |
| <p>Type of integration</p> | <p>Approach to ensure the action will be integrated</p> | | |
| <p>Sectorial integration</p> | <p>The pagoda will have multi functional purpose that address environment, economic, social and cultural concerns. The Pagodas will have a greening effect on the area and will essentially be a living section of the City Wall, a green corridor effect. Using the pagoda to mark where the wall once stood will help locals and tourists to visualise Limericks history as a walled city. The area should see an increase in footfall and tourism as a result of the pagoda installation</p> | | |
| <p>Horizontal</p> | <p>The URBACT local group members were involved in the pagoda design phase. The drawings were displayed at the community testing action events. Feedback was welcomed from the public on the designs. Meetings with necessary stakeholders will continue as the plan progresses.</p> | | |
| <p>Vertical integration</p> | <p>LCCC archaeologist is a ULG member and will keep the National Heritage Council informed of progress or any permissions required.</p> | | |
| <p>Territorial integration</p> | <p>The project does not cross any County boundaries. Details drawings will be available to view for all community groups living in the area.</p> | | |
| <p>Soft hard investments</p> | <p>The Pagoda itself will be an investment in hard infrastructure. But the visual appeal and the improved green corridor will have a knock on effect for an increase in footfall , flora/fauna activity and tourism.</p> | | |
| Cross-cutting themes | | | |
| <p>Theme</p> | <p>Approach to ensure the action will be address this theme</p> | | |
| <p>Environment</p> | <p>The Pagoda’s will be planted with pollinator friendly plants where possible. Once established they will provide a green corridor effect. They will be a source of shelter/food for animals in the area. Plants provide cleaner air, filter water and give shade. It will be important to pick the right planting scheme and ensure it is maintained correctly.</p> | | |
| <p>Gender</p> | <p>The pagodas are an action accessible to all. Everyones feedback and comments will be taken on board at design and delivery phase. The action does not exclude anyone and everyone will be able to enjoy the green corridor effect and the connection back to the Old City Walls.</p> | | |
| <p>Digital</p> | <p>It would be possible to include a QR code linking back to the pagoda planting scheme as well as what the pagoda represents</p> | | |

5 Action 3: Installation of pagodas at specific locations on Old Clare Street.

Risks

| Risks | Likelihood | Impact | Mitigation measures |
|---|-------------|---|---|
| Resistance to the removal of the onstreet carparking essential for the pagoda placement | Very likely | The pagodas could not be installed to follow the original standing line of the Old City Walls | Detailed discussion with relevant internal departments in LCCC and the local community |
| Anti social behaviour | Very likely | Damage to the structure of the pagoda | Important to consider the material for the pagoda. Have an increased garda footfall in the area. Talk to as many local residents as possible before the pagoda is installed to explain what it represents to ensure a sense of ownership. |
| Failure of the planting scheme | Possible | Visually unattractive , costly to replace | Important to choose plants that are appropriate and to enure their maintenance |

Activities

| Activity | Dates | Outputs | Problems and concerns |
|---|--|--|---|
| Map location of pagoda's to be installed on Old Clare St Detailed design of the pagoda structure and planting scheme | Quarter 2 2025 Quarter 4 , 2025 | Confirmation map of locations A finalised pagoda design and planting scheme | Community might be unhappy due the location of the pagodas which will require the removal of a number of onstreet parking bays. |
| Community consultation to display pagoda detailed design and look for feedback | Quarter 1, 2026 | Public consultation | Not speaking to the right people |
| Apply for funding from Heritage Council to implement design | | | Not receiving funding |
| Installation of pagodas | Quarter 3, 2026 | A number of pagodas installed | |

Monitoring

Outputs

| Indicator | Monitoring mechanism | Target |
|--|--|----------|
| Increased footfall in the area | Possibly footfall counters , surveys of why people visit the area. | Annually |
| Increased habitat for flora and fauna Increased green corridors | Carry out seasonal survey on species/biodiversity | 4 |
| | | |

Results

| Indicator | Monitoring mechanism | Target |
|---|---|---|
| The number of pagodas successfully installed | A count of new pagodas installed | Two pagodas will be installed |
| A measure of the visual representation of where the Old City Walls once stood | Monitoring the length of the new visual structures representing the Old City Wall | Length to be installed as per design drawings |
| | | |

Action 12 : Remove storage sheds to provide playground space in Watergate Flats

| | | |
|---|--------------------------------------|--|
| Summary of the action <i>A number of derelict storage sheds dominate the green space in a highrise apartment communal area. These sheds have become a visually unattractive focal point for anti social behaviour , dumping and drug usage. Removing the line of storage sheds will open up the area, increase permeability, allowing for a larger usable green space. Removing the source of the anti social behaviour and creating through flow, will open the area to greater footfall , allowing the potential for a greenspace that can now be used for play/time in nature.</i> | Action owner | LCCC |
| | Link to specific objective(s) | Creation and enhancement of disused urban green space. |
| | Action readiness | Work in progress |
| | Timescale | To permanently remove disused storage sheds and create usable green space. |

| Finance and resources | | | Main stakeholders |
|---|--|---------------|--|
| Amount needed | Source | Status | Who will be involved? To do what? → LCCC departments, Housing Support Services, Cleansing , Parks , Housing Maintenance , Waste Enforcement. Paul Partnership, local residents, The Gardai |
| Unknown costings , LCCC staff resources | Internal municipality budgets across several departments | Exploration | |

Integration

| Type of integration | Approach to ensure the action will be integrated |
|--------------------------------|--|
| Sectorial integration | The removal of the derelict row of sheds will have a positive environmental and social impact. Currently the space is heavily littered, used for anti social behaviour and it would be unsafe for children to play here. By removing the sheds, you open up the space, it can become a green area where children play and the community can meet up , hold events and socialise together. You also have the enhancing of the green space in size and potential for planting of additional trees and flowers. |
| Horizontal | A subgroup to be formed around the process with LCCC internal departments, residents and local charity/social groups. |
| Vertical integration | n/a |
| Territorial integration | Will liase with the community and keep them informed of timelines. Hold a planting workshop. |
| Soft hard investments | There will be the removal of the hard infrastructure, the sheds, they will be replaced by a green space for play. Events can be organised to encourage people to come outside and enjoy the new space. |

Cross-cutting themes

| Theme | Approach to ensure the action will be address this theme |
|--------------------|--|
| Environment | Will have a positive environmental effect, a cleaner, safer, functional green space, an improved habitat for biodiversity. |
| Gender | The space will be more inclusive once cleared of the rubbish and overgrown vegetation. The removal of the dead end created by the derelict sheds opens up the area for people to now walk through, creating a safer space. |
| Digital | |

Risks

| Risks | Likelihood | Impact | Mitigation measures |
|------------------------|------------|--|--|
| Anti social behaviour | Likely | People would not feel safe using the space | Increased patrols by the Gardai Possible caretaker on site for the Apartment Complex |
| Rubbish dumping | Likely | A build up of rubbish , drawing vermin, flies , smells | Waste management and bin ownership to be enforced in the area. Fines for illegal dumping |
| No regular maintenance | Possible | Area would become overgrown | Would need to be included and budgeted for in schedule of maintenance |

Action 12 : Remove storage sheds to provide playground space in Watergate Flats

| Activities | | | |
|--|---|---|-------------------------|
| Activity | Dates | Outputs | Problems and concerns |
| Subgroup meetings to discuss the removal of the sheds with relevant stakeholders | Quarter 1, 2025 | Plan of action | Budget for shed removal |
| Discussions with local residents | Quarter 3-4, 2025 | Feedback/concerns taken on board | |
| | | | |
| Monitoring | | | |
| Outputs | | | |
| Indicator | Monitoring mechanism | Target | |
| A number of meetings/workshops held | Meetings will be minuted, photographs, comment cards | 2 meetings/workshops held | |
| Communication campaign, leaflet drop | Number of leaflets distributed, no. of communication boards placed in area. | Distribute leaflet to all tenants in vicinity of the space. To have an updated information board of the process timeline in the space. | |
| | | | |
| Results | | | |
| Indicator | Monitoring mechanism | Target | |
| Sheds removed | Visual | Sheds removed | |
| Creation of expanded, enhanced greenspace | Visual. Measurement of usable space pre and post shed removal | Additional green space created | |
| | | | |



Watergate Flats area , sheds for removal

Action 22: Programme of events to be carried out throughout the year/annual basis .

| | | | |
|---|--|--|--|
| Summary of the action <i>Following the success of the testing actions, LCCC will continue to coordinate a number of events in the Irishtown area throughout the year. These social events will align with key calendar dates such as Heritage Week, Halloween etc. The main point of the action is to get the local community to come together and socialise. Building a strong community network will have a positive effect on issues around anti social behaviour and litter in the area. Holding events also introduces those both living in Irishtown and those outside the area to the history of the Old City Walls.</i> | | Action owner | LCCC |
| | | Link to specific objective(s) | Enhancement of disused urban area |
| | | Action readiness | Already (partially) started |
| | | Timescale | Annually |
| Finance and resources | | | Main stakeholders |
| Amount needed | Source | Status | LCCC Archaeologist , to apply for National Funding LCCC Parks Staff to support events. LCCC Tourism, Arts departments to support events. Local residents groups to help with promotion. |
| Unknown monetary costs. Staff from LCCC and local resident support | Municipal and National Funding | Exploration | |
| Integration | | | |
| Type of integration | Approach to ensure the action will be integrated | | |
| Sectorial integration | <i>These events will be foremost social events, open to all. They will be held at fixed times in the calendar year to celebrate, Heritage Week, Biodiversity Week, Culture Night.</i> | | |
| Horizontal | <i>The local ULG group consists of a broad network of organisations across a number of diverse areas, the group can continue in a role to help support the promotion of the social events throughout their own networks.</i> | | |
| Vertical integration | <i>The Heritage Council will be involved nationally as they are a potential source of funding as well as locally elected representatives in the area.</i> | | |
| Territorial integration | <i>The events will be promoted across the whole Irishtown area, with leaflet drops, posters, as well as advertising in local newspapers.</i> | | |
| Soft hard investments | <i>The social events are soft measures, no hard infrastructure investment is required.</i> | | |
| Cross-cutting themes | | | |
| Theme | Approach to ensure the action will be addressed by this theme | | |
| Environment | <i>All events will operate on the principle of leave no trace. Single use items are to be avoided</i> | | |
| Gender | <i>The events will be held in accessible areas and promoted across the whole community</i> | | |
| Digital | <i>QR codes on leaflets and signs to promote events and history of the area</i> | | |
| Risks | | | |
| Risks | Likelihood | Impact | Mitigation measures |
| <i>Lack of budget</i> | <i>Possible</i> | <i>Event could not be held</i> | <i>Be proactive in sourcing funds</i> |
| <i>Anti social behaviour</i> | <i>Possible</i> | <i>Would effect success of the event</i> | <i>Community gardai and local residents groups to be involved in the planning</i> |
| <i>Bad weather</i> | <i>Possible</i> | <i>Events might need to be cancelled</i> | <i>Allow options for shelter if required</i> |
| Activities | | | |
| Activity | Dates | Outputs | Problems and concerns |
| <i>A number of one day events held to coincide with certain calendar weeks.</i> | <i>Heritage Week 2024</i> | <i>A community event, a tourist attraction</i> | <i>Bad weather, lack of budget</i> |
| | | | |
| | | | |

Action 22: Programme of events to be carried out throughout the year/annual basis .

Monitoring

| Outputs | | |
|---|---|-------------------------------------|
| Indicator | Monitoring mechanism | Target |
| A number of promotional leaflets, posters created. | Number of leaflets distributed, posters hung in the area | |
| | | |
| Results | | |
| Indicator | Monitoring mechanism | Target |
| Programme of events in place to take place annually | Number of events that took place Number of people attending each event | Three events to take place annually |
| | | |
| | | |



Social event, enjoying the Irishtown Heritage Festival August 2024

6 Implementation framework

7.1 Governance

The URBACT GreenPlace project is due for completion in December 2025 with the final IAP as the output from the project. Measures must be put in place to ensure that the IAP is successfully implemented beyond the GreenPlace project. It is intended to continue meeting with the ULG group beyond December 2025 to ensure continuity in the project and that interested parties are kept informed of progress on the project. It is intended to arrange briefings with the Elected Members and provide updates at the appropriate stages of implementation. The project has been included in the Public Realm Strategy for Limerick and therefore forms part of an overall list of public realm projects to be delivered in the revitalisation of Limerick City. The project has been pitched to national funding agencies as part of the National URBACT meeting on the 5th and 6th November 2024, where the Department of Environment, Heritage and Local Government advised that the project would attract URDF funding (Urban Regeneration Development Fund). Consideration can be given to having a joint funding application with nearby public realm projects around the Milk Market which is a tourist attraction, thereby strengthening the delivery of the project.

7.2 Ongoing stakeholder engagement

The participatory approach which has been central to the GreenPlace process in Limerick will remain a mainstay of the project into its next phase of implementation. The ULG group will be renamed as the UIG group Urbact Implementation Group, where meetings on a quarterly basis will continue to progress and monitor the various actions on the IAP. It will be necessary to form a Community Forum for Watergate to harness interest in the actions appropriate to the community and to ensure buy in from the outset of implementation. This is critical to the ongoing participation that will be required long after the implementation of the actions for the Watergate area. There is a Residents Association for the Johnsgate area who are actively involved in implementing actions for the project.

The Community Forum will be represented on the UIG and will address initiatives such as community clean ups, community gardening, small scale community events with the support of Paul Partnership. The Community Forum can also identify small improvements that can be discussed with the UIG regarding opportunities for funding these improvements. The establishment of the Community Forum and its link with the UIG will ensure citizen participation and that they are engaged in the development of their community.

7.3 Funding approach

The full implementation of the IAP will rely on a mix of European, National and Municipal resources. It is envisaged that a joint funding application for URDF funding can be made for the entire project with other public realm projects in the city. This will provide the greatest outcome for all projects. Alternatively and if the URDF approach is not successful, the GreenPlace project can be split into categories of funding as follows:

- Pergola area on Old Clare Street – Community Monuments Funding
- Raised table and public realm on New Road – Low Cost Safety Scheme, Department of Transport in conjunction with Roads department
- Art Installations/Murals - Creative Ireland in conjunction with Arts department
- Tree planting – Climate Action Funding in conjunction with the communities
- MUGA/Natural Play – Sports Capital application/Limerick Sports Partnership
- Playground – Community Recognition Fund through Parks department
- Paving/pathways/public realm – National Transport Authority through Active Travel department
- Corporate Partnerships – Mobilizing investment through Corporate Social Responsibility (CRS) programs.

6.6 Risk management

There are a number of risks to the delivery of the GreenPlace project and these have been identified below. It will be necessary to keep these risks under review and ensure that they are managed at the earliest opportunity.

| Risk | Likelihood | Impact | Mitigation |
|--|------------|--------|---|
| Failure to secure removal of barriers | High | High | Ongoing engagement with affected parties |
| Community not engaging | Medium | High | Set up community forum and regular check ins and updates |
| Keeping public interested in history of area | High | High | Annual Irishtown Heritage Fest and other events need to be identified |
| Area not safe to use | High | High | Regular contact with Gardai |
| Insufficient funding for project | High | High | Deliver sections of projects with grant opportunities as they arise |
| Lack of commitment to the project | Medium | High | Regular updates on project, keep project on the agendas |

These risks will be monitored at the quarterly meetings to ensure that they are effectively managed and where necessary, some adjustments to timelines may be necessary. Stakeholders associated with these risks should be included on the UIG to ensure continuity in engagement, in an effort to minimise these risks in the delivery of the project.

7 Conclusion

The revitalisation of the City Walls and green spaces in the Irishtown area of Limerick city will bring these areas back to life and create a tourism offering for the city, while awakening pride in the residents of these communities. The revitalisation of the area will provide opportunities for recreation and community engagement with improved public realm and connectivity to the main thriving areas of the city, which have been cut off for many years.

8.1 Local community and dissemination plan for the IAP

In order to maintain momentum for the delivery of the actions in the IAP, a communication plan is required that will be shared with the community so that all residents are kept informed on the actions to be delivered and encourage greater involvement of the community on the project. This will ensure community involvement is kept to the fore as this is vital for the long term sustainability of the area. The communication plan will also be shared with all stakeholders.

The IAP will be communicated through a multi-channel dissemination strategy in order to reach different groups in the community. This approach will foster a greater understanding of the actions and encourage awareness and active participation.

A number of public events and workshops will be held, such as the Watergate Planting event in association with Paul Partnership. Plans and drawings can be put on display at events and staff will be on hand to answer queries.

Online platforms and digital outreach, the IAP will be disseminated through LCCC'S official website Limerick.ie. Subsequent actions will be shared across LCCC social media channels.

Media and press engagement: media organisations will be informed of actions and invited to local events, to highlight key project successes, helping to increase the visibility of the project across the city.

8.2 Immediate next steps in the coming six months

The next steps are to :

- Deep clean Watergate area
- Devise timeline for removal of Watergate sheds with Community and Housing departments
- Organise community gardening event in Watergate
- Secure agreement with all landowners on public access to City Wall
- Arrange quarterly events around the City Wall, community gardening, guided walks, Irishtown Heritage Fest and screenings on City Wall.
- Start compiling information for interpretive signage
- Finalise detailed landscape drawing for the project areas

All works and events will be communicated via social media to ensure that the project is kept alive at all times and project website updated accordingly.

8.3 Contact details for key individuals responsible for implementing the IAP

- Carmel Lynch

carmel.lynch@limerick.ie

- Sharon Lynch

sharon.lynch@limerick.ie

