

Co-funded by
the European Union
Interreg



INTEGRATED ACTION PLAN GREEN TRANSITION IN INDUSTRY

CONTENTS

Acknowledgements	2
Executive Summary	4
Section 1 Setting the Scene – Local Context and Needs	6
1.1 Introduction	7
1.2 URBACT Local Groups and Stakeholders	8
1.3 Overview of Navan's Current Status	9
1.4 Decarbonising Zone	10
1.5 Existing Strategies and Policies	12
1.6 Problem Identification	13
1.7 Integration Challenges	14
Section 2 Integrated Approach	16
2.1 Integrated Approach	17
2.2 Vision and Strategic Objectives	19
2.3 Strategic Objectives	20
2.4 Action Selection Process	21
2.5 Testing Actions	23
2.6 Summary of Selection of Actions	29
Section 3 Action Planning	32
3.1 Planned Actions	34
Section 4 Action Implementation Framework	52
4.1 Implementation Framework	53
4.2 Governance	54
4.3 Ongoing Stakeholder Engagement	56
4.4 Overall Costings and Funding Strategy	57
4.5 Overall Implementation Timeline	58
4.6 Risk Assessment Management	59
4.7 Monitoring and Reporting	60

Acknowledgements

Meath County Council wishes to acknowledge all who contributed to the co-creation of this Integrated Action Plan (IAP), a significant collaborative effort under the URBACT IV Programme's IN4GREEN Project. This plan reflects the shared vision and objectives of numerous dedicated individuals and entities.

Special thanks are extended to:

The URBACT Local Group (ULG), for their fundamental role in setting priorities, identifying challenges, and co-designing actions tailored specifically to Navan's local context.

The broader communities and businesses in Meath, for their increasing awareness, engagement, and support for the necessary and effective climate action vital for our collective social and economic well-being.

Our transnational partners in the IN4GREEN Network – Avilés (Spain, Lead Partner), Bijelo Polje (Montenegro), Dąbrowa Górnicza (Poland), Famalicão (Portugal), Larissa (Greece), Sabadell (Catalonia, Spain), Salerno (Italy), Solingen (Germany), and






Žďár nad Sázavou (Czech Republic) – for their knowledge exchange, peer-review support, and integration of best practices that enriched this plan significantly. A special mention to our Expert Lead José Costero, for providing exemplary methodological guidance, expertise, and support throughout the co-creation process.

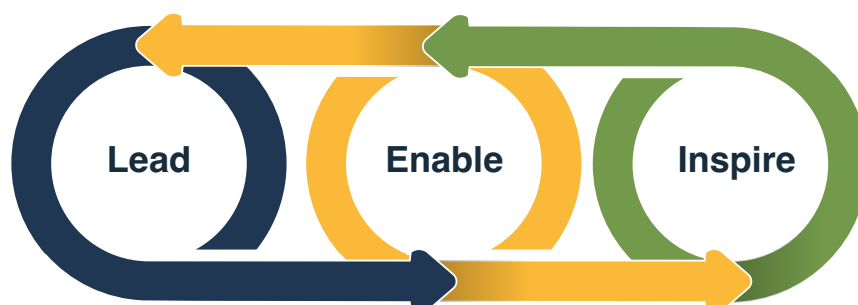
Our colleagues across the Council, particularly the Climate Action Section, Strategic Planning, Economic Development, Biodiversity and Heritage teams, as well as Meath Chambers and Meath Local Enterprise Office, whose expertise and commitment were invaluable.

The shared vision and commitment demonstrated during the design phase provides a strong foundation for a successful implementation of the next phase of this IAP.



Project Summary:

Project:	IN4GREEN – URBACT IV Programme
City:	Navan, Ireland
Lead Partner:	Avilés (Asturias, Spain)
Partner Cities:	<ul style="list-style-type: none"> → Bijelo Polje (Montenegro) → Dąbrowa Górnicza (Poland) → Famalicão (Portugal) → Larissa (Greece) → Sabadell (Catalonia, Spain) → Salerno (Italy) → Solingen (Germany) → Žďár nad Sázavou (Czech Republic) → Navan (Ireland)
Local Coordination:	Meath County Council
Responsible Team:	Climate Action Section
Contributing Units:	Strategic Planning, Economic Development and Local Enterprise Office, Biodiversity and Heritage
Local Stakeholders:	URBACT Local Group (ULG)
Lead Expert:	José Costero
Contacts:	<p>Meath County Council - Climate Action Section</p> <ul style="list-style-type: none">  Climate Action Meath.ie  Meath County Council  @meathcoco  @meathcoco 



Executive Summary

Navan's Integrated Action Plan (IAP), developed under the URBACT IV **IN4GREEN** Network, sets out a clear roadmap for transitioning the town's industrial economy towards a sustainable, low-carbon future. Co-created with local stakeholders through the URBACT Local Group (ULG) and informed by European best practices, this plan addresses the dual challenge of decarbonisation and economic resilience while embedding the cross-cutting themes of **green transition, digital innovation, and social inclusion**.





Why this matters:

Navan is designated as a **Decarbonising Zone**, placing it at the forefront of Ireland's climate action commitments. With a growing population, strong industrial base, and strategic location near Dublin, Navan faces both opportunities and challenges: reducing emissions from transport and legacy industries, improving energy efficiency, and ensuring equitable access to green infrastructure.

Vision:

"Working together to create a climate-resilient, biodiverse-rich, vibrant, and sustainable town that supports healthy lifestyles and jobs growth."

Strategic Objectives:

-  1. **Energy Efficiency & Renewable Energy** – Accelerate retrofitting, promote renewable energy uptake, and reduce energy poverty.
-  2. **Sustainable Transport & Mobility** – Shift from car dependency to active and public transport through infrastructure and behavioural change.
-  3. **Biodiversity & Green Infrastructure** – Enhance urban greening, protect ecosystems, and integrate nature-based solutions into regeneration.
-  4. **Circular Economy & Resource Efficiency** – Foster reuse, repair, and sustainable consumption practices among businesses and communities.

Key Actions:

9 key actions across Energy, Sustainable Transport, Biodiversity, and Circularity were co-created by the Urbact Local Group for further implementation.

Implementation frameworks including funding resources, governance, impact, risk assessments, and estimated timelines were then created for each of the 9 actions.

Implementation Framework:

The plan outlines governance structures led by Meath County Council, funding strategies leveraging local, national, and EU sources, and a robust monitoring system with KPIs aligned to the Climate Action Plan 2024–2029. Actions are phased across short-, medium-, and long-term horizons (2024–2030), ensuring measurable progress toward a 51% emissions reduction by 2030 and net-zero by 2050.

Impact:

By integrating climate action with economic development, Navan's IAP positions the town as a **national exemplar for green transition**, fostering innovation, resilience, and inclusivity while contributing to Ireland's and Europe's sustainability goals.

The table below summarizes the implementation framework:

Action	Hard Infrastructure	Impact - Effort	Governance Complexity	Added Attributes	Estimated Cost	Funding Status	Timeline
1.0 Energy Efficiency and Renewable Energy							
1.1 Establish a Sustainable Energy Community (SEC) in Navan	No	Quick win	Medium	Green, Digital	€25,000	Seeking Funding	Jan 2026 – Dec 2027
1.2 Distribution of excess renewable energy to social housing	Yes	Minor project	Medium	Gender, Green, Digital	€17,500	Conditional Approval	Jan 2026 – July 2026
1.3 Establish Navan as a Digital Twin Town	No	Minor project	Medium	Green, Digital	€25,000	Conditional Approval	June 2026 – June 2027
2.0 Sustainable Transport and Mobility							
2.1 Pedestrianise Trimgate Street, Navan	Yes	Major project	Medium - High	Green, Digital	€584,000	Seeking Funding	Jan 2026 – September 2027
2.2 Establish a cycle, pedestrian and bus system for schools in Navan	Yes	Minor project	Medium	Gender, Green, Digital	€70,000	Seeking Funding	Jan 2026 – Feb 2027
3.0 Biodiversity & Green Infrastructure							
3.1 Increase tree coverage	No	Minor project	Medium	Green	€70,000	Seeking Funding	Jan 2026 – May 2027
3.2 Develop Amenity Area at Liscartan	Yes	Major Project	Medium - High	Green	€122,000	Seeking Funding	Jan 2026 – May 2030
4.0 Circular Economy & Resource Efficiency							
4.1 Centre of Business Excellence (Thrive)	Yes	Major Project	Medium - High	Gender, Green, Digital	€5,000,000	Funding Secured	Aug 2024 – Sept 2025
4.2 Community Reuse & Repair Hub	Yes	Major Project	High	Gender, Green, Digital	€1,100,000	Seeking Funding	Jan 2027 – March 2029

Section 1

Setting the Scene



Introduction

The URBACT In4Green Network aims to empower and build the capacity of local Stakeholders in industrial areas to overcome the barriers that prevent the transition to greener economies while remaining competitive and inclusive cities.

The overall challenge that the In4Green network wants to address is the green transition in small and medium-sized European cities with an industrial past.

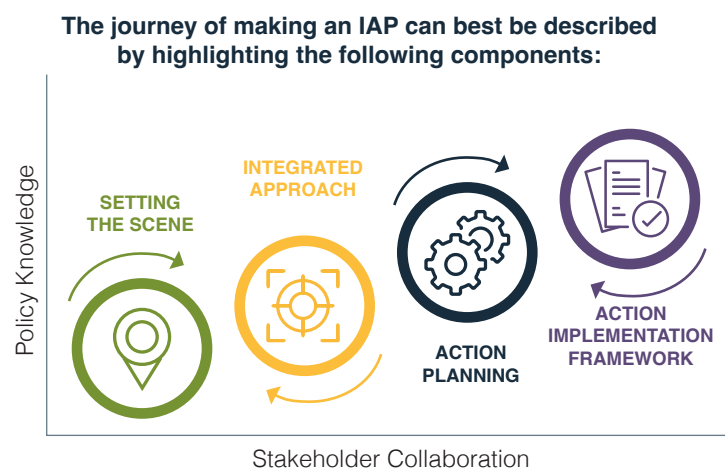
The green transition in industrial cities is a major challenge. These areas face obstacles to adopting more sustainable practices due to their dependence on traditional industry and lack of resources. However, it is crucial to include these cities in the transformation towards a greener economy. They contribute significantly to the economic development of their territories and represent an important part of EU employment and GDP. The green transition can be an opportunity to revitalise these areas, improve the quality of life of inhabitants and reduce pollution. To achieve this, public authorities need to be empowered and industrial Stakeholders need to be trained.

It is also essential to involve all stakeholders across society in the development and

implementation of local green transition policies.

Collaboration and networking are key to overcoming challenges and moving towards a more sustainable future. Modernising industries and improving urban management are key elements in this process. Through the joint efforts of all Stakeholders involved will be able to lead the transformation towards a more efficient and environmentally friendly economy, improving the quality of life of our communities.

In short, the green transition in industrial cities is essential to achieve sustainable development. Despite the challenges, all areas have much to gain by adopting more sustainable practices and promoting innovation. Working together, we can drive positive change and make Navan an example of success in the transition to a greener economy.



URBACT Local Group (ULG)

Stakeholders

To leverage existing collaborative efforts between the municipality and various public and private stakeholders, a formal group called the URBACT Local Group (ULG) has been established.

This group actively involves diverse representatives from across sectors to ensure that local strategies are developed collaboratively, enjoy broad support, and align with regional, national, and international

objectives. This collaborative approach is crucial for strengthening Navan's capacity to drive sustainable and inclusive development. This table details the composition of the ULG.

Meath Climate Action	Sector	Gender
Area Engineer	Council	M
Food Development Manager	Council	F
Development Manager (Economic Development)	Council	F
Biodiversity Officer	Council	M
Community & Broadband Officer	Council	M
Planning Department	Council	F
Economic Development	Council	F
SIPTU	Business	M
Meath Chambers	Business	F
Tara Mines	Business	F
Sherlogs	Business	M
Leon's Café	Business	M
Solstice Renewables	Business	M
Joe Smyth Boilers	Business	M
IDA	Business	M
Elected Representative	Community	M
Comhairle na nÓg (Youth Work Ireland Meath)	Community	M
Involve Group	Community	F
Community PPN	Community	M
Wild about Navan	Community	F
Navan Men's Shed	Community	M
Navan Cycling Initiative	Community	M

Overview of Navan's Current Status

Population and Demography

Navan, the administrative centre of County Meath, has a population of 33,886 (2022). The town is experiencing consistent growth, reflecting its role as a regional hub for employment and services. The population is relatively young, with a notable proportion under the age of 18 (29.7%), while 57% are aged between 18–59, and 13.3% are over 60. This demographic distribution presents opportunities for a dynamic workforce while also highlighting the need for sustainable infrastructure to support a growing urban population.



Economic Composition and Employment Statistics

Historically a market town, Navan has evolved into a vibrant business and shopping hub, with a strong industrial base. Key sectors include manufacturing, retail, and services. In recent years, there has been an increase of 2.8% in the proportion of people working, bringing the total population in employment to 58.7%, higher than the national average. Additionally, the unemployment rate has decreased by 3.9% in recent years and is currently at 5.7%. Navan's strategic location along the M3 motorway facilitates connectivity to Dublin, which supports a commuter workforce and strengthens economic ties. However, the town also faces

challenges in transitioning legacy industries to align with green and circular economic principles, as envisioned in the National Climate Action Plan.



Social Challenges and Inequality, Access to Services

Navan benefits from a mix of private and social housing, with 1,264 homes rented from the local authority. Despite its growth, the town contends with pockets of social inequality, exacerbated by rising housing costs and varying access to public services such as healthcare and education. Investment in social infrastructure and community engagement remains critical to ensuring inclusivity in the green transition.



Location



Located at the confluence of the Boyne and Blackwater rivers, Navan enjoys a central position in County Meath. Its proximity to Dublin and connectivity to other towns such as Ashbourne, Trim, and Kells enhances its appeal for businesses and residents.

Decarbonising Zone

Decarbonising Zone

Navan is one of 9 Decarbonising Zones in County Meath. A Decarbonising Zone (DZ) is a chosen area where local authorities, businesses, and communities work together to reduce the amount of carbon produced

by their everyday activities. By looking within the community for ways to live, work and play more sustainably, these zones can find local solutions to global problems, such as reducing greenhouse gas emissions, improving air quality, saving energy and reducing waste.



Emission Profile

Emissions for Navan accounts for 6% of County Meath's total emissions. The distribution across specific sectors in Navan is as follows:



	Commercial	Transport	Waste	Residential
ktCO ₂ eq	101	46	67	55
% of County Total	18%	11%	18%	9.9%
County Total	556	419	378	556

	DZ Total
ktCO ₂ eq	269
% of County Total	6%
County Total	4,254



Existing Strategies and Policies

The integrated sustainable development of Navan is guided by a set of strategies and policies from European through to local level.

European	European Union Cohesion Policy European Green Deal EU Industrial Strategy Fit for 55 Paris Agreement 2015
National and Regional	Project Ireland 2040 Delivering Effective Climate Action 2030 (DECA 2030) Climate Action and Low Carbon Development Act 2021 National Climate Objective National Climate Action Plan National Broadband Plan National Planning Framework Mid-East Regional Enterprise Plan Boyne Valley Tourism Strategy 2024 – 2030
Local	Navan 2030 Climate Action Plan 2024-2029 Biodiversity Action Plan 2025 – 2030 County Development Plan 2021-2027 Meath Local Economic and Community Plan (LECP) 2023–2029 Meath County Council Economic Development Strategic Action Plan 2024

Problem Identification

Local Strengths, Weaknesses, Opportunities, and Threats (SWOT) Analysis

A SWOT analysis was created for Navan to outline which opportunities and challenges should be considered in developing future actions. Actions then build on the strengths of the town, utilising opportunities for the town, while addressing the threats and weaknesses.

The below shows the key findings of the analysis identifying **local Strengths, Weaknesses, Opportunities and Threats**:



Integration Challenges

Navan has taken significant steps towards integrated urban development, particularly through its alignment with the Climate Action Plan 2024–2029.

The town's identification as a DZ demonstrates a commitment to place-based action that address both mitigation and adaptation challenges. The integration of economic, social, and environmental dimensions into urban planning remains a work in progress. Current initiatives often operate within silos, with limited cross-departmental co-ordination or collaboration between stakeholders. Addressing this fragmentation is critical to achieving a cohesive, impactful green transition.

Current Approach to Key URBACT Cross-Cutting Themes

→ **Green Transition:** The Climate Action Plan outlines ambitious goals to reduce greenhouse gas emissions by 51% by 2030 and achieve net zero by 2050. This includes measures such as retrofitting buildings, promoting sustainable transport, and enhancing biodiversity. However, implementation challenges, particularly in securing funding and stakeholder buy-in, hinder progress.



→ **Gender Equality:** While gender considerations are not explicitly central to current urban development policies, there is scope to integrate this perspective, particularly in areas such as active travel infrastructure and community engagement. Ensuring equitable access to sustainable transport, housing, and public services will help address gender disparities. Meath County Council has a Dignity at Work Policy and our Equality & Human Rights Value Statement are available to the public and outlines how inclusivity and equality are key to the delivery of our policies and services.



→ **Digital Transition:** Digital tools are underutilised in Navan's current approach. Opportunities exist to leverage data and smart technologies for energy efficiency, real-time transport monitoring, and community engagement. Developing digital literacy and infrastructure will be crucial to supporting this transition. Meath County Council's Digital and ICT Strategy will encompass plans to address the above challenges with the strategy due to be agreed in Quarter 1 of 2026.



Key Integration Challenges

1. Stakeholder Engagement and Collaboration:

Establishing effective partnerships between local government, businesses, community groups, and residents remains a challenge. Cultural and organisational behaviours need to shift towards more collaborative approaches.

2. Resource Allocation and Funding:

Achieving integration requires significant financial and human resources. Limited access to funding and expertise often constrains progress.

3. Policy Alignment: While the Climate Action Plan provides a strategic framework, ensuring its seamless integration with local urban development plans requires greater coordination across departments and sectors.

4. Equity and Inclusion: Ensuring that all population groups, particularly vulnerable communities, benefit from the green transition is a priority. This includes addressing access to housing retrofits, public transport, and digital services.

5. Capacity Building: Building knowledge and skills among local authorities, businesses, and residents to support integrated urban planning and the adoption of sustainable practices will take time and consistent effort.

Moving Forward

The focus for Navan will be on incremental, demonstrable progress toward more integrated approaches. Strengthening cross-departmental coordination, embedding cross-cutting themes such as gender and digital transformation, and fostering partnerships across stakeholders will be key to achieving the ambitious goals of the URBACT In4Green Network. While not all aspects can be addressed simultaneously, clear prioritisation and phased implementation will ensure progress is both practical and measurable.



Section 2

Integrated Approach



Integrated Approach

The Integrated Action Plan for Navan adopts a holistic, multi-dimensional approach to addressing its strategic objectives, ensuring economic, environmental, and social sustainability. Below is an assessment of how the planned actions form an integrated framework and highlight the strengths and potential gaps in the plan.

Key Elements of the Integrated Approach

1. Interdisciplinary Focus

Actions address diverse but interconnected areas, such as mobility, energy efficiency, biodiversity, and waste management, ensuring that no single aspect of sustainable development is prioritised at the expense of another.

2. Stakeholder Collaboration

The IAP actively engages stakeholders, including Public Bodies, residents, businesses, schools, transport providers, and Meath County Council ensuring that each group contributes to and benefits from the plan's success.

3. Spatial Integration

Actions span urban, suburban, and natural areas, with attention given to both the town centre and outlying residential districts, ensuring equitable distribution of benefits.

4. Cross-Sectoral Impact

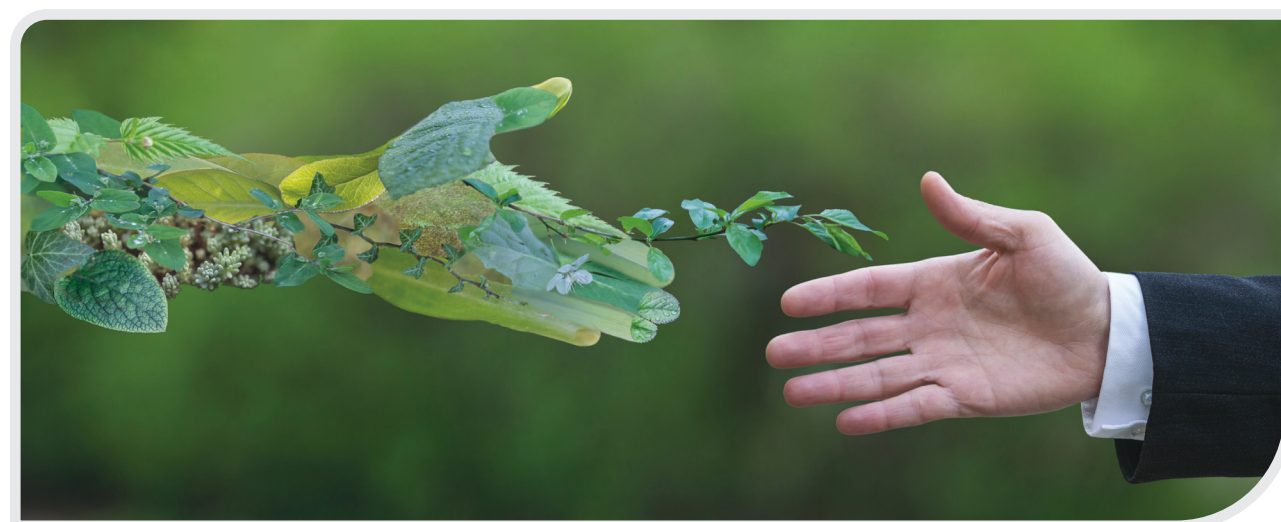
The actions, such as urban greening and sustainable transport, simultaneously support multiple objectives like climate resilience, improved air quality, and enhanced public health.

5. Temporal Integration

The IAP balances short-term and long-term goals, ensuring momentum while maintaining focus on strategic objectives.

6. Alignment with Existing Policies

The IAP aligns closely with the Meath County Council Climate Action Plan and National Climate Objective, ensuring coherence and leveraging existing frameworks and funding opportunities.



Strengths of the integrated approach

- **Comprehensive Coverage:** The IAP includes actions for energy, transport, biodiversity, waste, community engagement, and urban development, ensuring all critical sectors are addressed.
- **Systems Thinking:** The plan recognises interdependencies, such as how public transport improvements reduce emissions and promote economic mobility.
- **Inclusivity:** Actions like community + business workshops and school programmes foster widespread engagement and build collective responsibility for climate action.
- **Flexibility:** The IAP is adaptable to future needs, allowing adjustments based on monitoring, stakeholder feedback, and peer review outcomes.

Potential Weaknesses or Gaps

1. Digital Integration

The plan could benefit from incorporating more digital tools, such as smart city solutions for traffic management or real-time monitoring of emissions and energy use.

2. Gender and Social Inclusion

While the IAP involves the community, there is room to explicitly target vulnerable or underrepresented groups, ensuring that actions promote equity.

Steps for Strengthening Integration

- 1. Peer Review:** The planned actions will undergo a peer review in 2025 to identify overlooked aspects and improve cross-sectoral synergies.
- 2. Gap Analysis:** The ULG will conduct a gap analysis during the review process to ensure no critical sectors or vulnerable populations are excluded.
- 3. Iterative Development:** Stakeholder feedback will inform refinements, ensuring the plan remains relevant and effective.



Vision and Strategic Objectives

The ULG (URBACT Local Group) was tasked with envisioning a sustainable Navan's future, a vision that defines the core of this IAP (Integrated Area Plan). This shared vision, which guides both the IAP's implementation and the achievement of the In4Green Programme's aims, is:



Vision

“ Working together
to create a climate
resilient, biodiverse rich,
vibrant, and sustainable
town that supports
healthy lifestyles and
jobs growth ”

Strategic Objectives

To achieve this vision, four (4) strategic objectives have been defined:



Energy Efficiency and Renewable Energy

- Accelerate retrofitting, promote renewable energy uptake, and reduce energy poverty.



Sustainable Transport and Mobility

- Shift from car dependency to active and public transport through infrastructure and behavioural change.



Biodiversity and Green Infrastructure

- Enhance urban greening, protect ecosystems, and integrate nature-based solutions into regeneration.

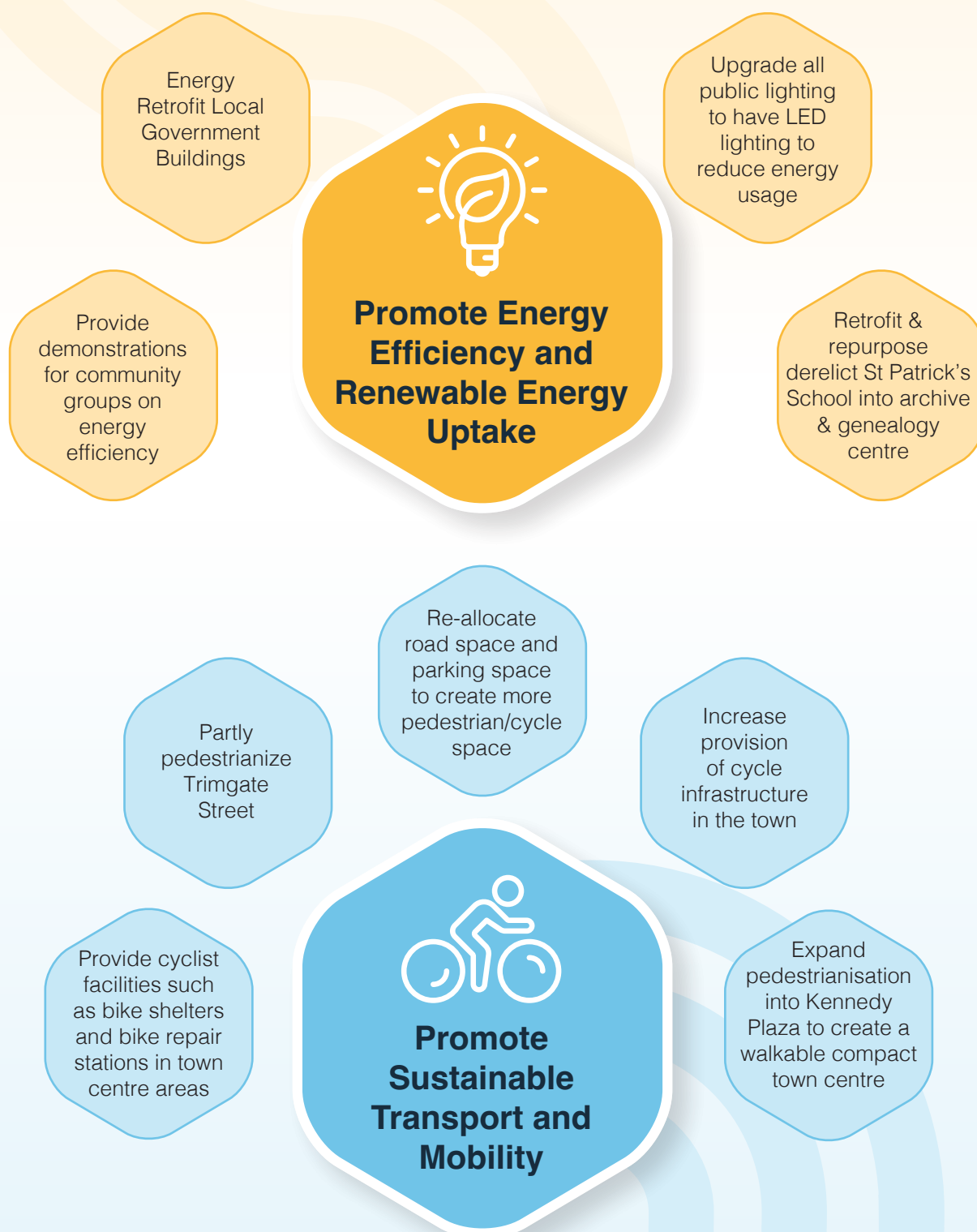


Circular Economy and Resource Efficiency

- Circular Economy & Resource Efficiency – Foster reuse, repair, and sustainable consumption practices among businesses and communities.

Action Selection Process

Through a series of brainstorming and design exercises, the ULG formulated proposed action items aligned with the IAP's four strategic objectives:





Testing Actions

Following the brainstorming exercises and proposed actions created, the ULG initiated a series of testing actions to explore innovative solutions for local sustainability challenges. These actions align with the green transition goals, foster collaboration, and facilitate small-scale experimentation before broader implementation. The completed actions are detailed below.



1. Energy-Efficiency – Home Energy Saving Kits

Objective	Action and Progress	Stakeholders
To increase public awareness and acceptance of energy-saving measures.	Meath County Council and Navan Library provided Home Energy Saving (HES) Kits, available for the public to borrow freely. These kits raise awareness of energy efficiency measures and help reduce household carbon footprints by providing a starting point for home energy assessments and advice on low-cost individual actions.	Meath County Council, Navan Library, general public.



2. Energy-Efficiency – NZEB Retrofit Truck

Objective	Action and Progress	Stakeholders
To enhance community awareness and acceptance of energy retrofits, including insulation and renewable energy installations.	<p>A “Retrofit Expo” was held in April 2025 at the Council Offices in Navan, featuring a mobile NZEB (Near Zero Energy Building) Retrofit Truck. The event included workshops and demonstrations on retrofitting. Representatives from financial institutions and local businesses offered guidance on home energy efficiency and funding sources.</p> <p>The expo successfully trained over 80 people on NZEB principles, provided 200 expert consultations, and held 50 guidance sessions with financial institutions. A radio broadcast reached an estimated audience of over 10,000 in the Louth/Meath area, complemented by a social media campaign offering energy efficiency tips and funding guidance.</p>	Meath County Council, Louth Meath Education Training Board, housing associations, local businesses, community groups, residents.





3. Bike Repair and Water Refill Stations

Objective	Action and Progress	Stakeholders
To increase the usage of bike repair and water refill stations, thereby encouraging active travel uptake and reducing plastic consumption.	Eight bike repair stations are being installed on the Boyne Valley to Lakelands Greenway, starting in Navan. Concurrently, 10 water refill stations are being placed along the greenway and in towns county-wide, including two solar-powered “aquasol” units specifically for Navan’s Public Realm. Providing these units around Navan is intended to improve the uptake of active travel, reduce traffic volume, and eliminate associated pollution, noise, and congestion.	Meath County Council, Active Travel Department, community groups, residents.





4. Circular Food Campaign

Objective	Action and Progress	Stakeholders
To improve community awareness and acceptance of circular food systems, encompassing composting, sustainable eating, and community gardens.	<p>This campaign involved several initiatives promoting sustainable eating, reducing food waste, and repurposing waste through composting and community gardening:</p> <ul style="list-style-type: none"> → Reducing Food Waste: The Climate Action Section promoted the use of a bio-digester that treats household food waste by demonstrating the Mullaghboy facility on June 21st, where free food caddies were distributed. → Surplus Food Redistribution: An awareness event for Meath County Council staff at headquarters featured a FoodCloud truck, which redistributes surplus food to disadvantaged communities. A similar public event was subsequently held at the Windtown Community Centre. → Training and Composting: A “Train the Trainer Event – Let’s Grow” was held in October 2024 to create community mentors for food growing and sustainable gardening. Additionally, composting best practices were demonstrated in Navan, followed by a series of events county-wide, training 58 members of the public in total. 	Meath County Council, housing associations, community groups, local representatives, social inclusion organisations, residents.





5. Green Fashion Campaign

Objective	Action and Progress	Stakeholders
To increase community awareness and acceptance of sustainable clothing alternatives.	<p>The “Ecochic” campaign aimed to improve clothing circularity and reduce emissions associated with fast fashion. Actions included raising awareness of textile waste impacts, encouraging sustainable alternatives, and providing upskilling opportunities.</p> <p>The Council hosted 10 clothing swaps and 15 upcycling/sewing workshops county-wide. Over 500 people attended the events, 150 received training, and 1,500 items were swapped. This initiative saved an estimated 10.5 tons of CO₂ emissions, conserved 890,000 litres of water, and saved 262 kgs of plastic from landfill.</p>	Meath County Council, community groups, social inclusion organisations, educational organisations, residents.



6. Liscartan - native woodland tree planting



Objective	Action and Progress	Stakeholders
To establish a native woodland on council owned land at Liscartan	<p>In 2025, Meath County Council established new native woodlands on a 7.9 hectares (19.5 acres) site in Liscartan, with Greenbelt appointed as the project's foresters.</p> <p>Oak, beech, hazel, and alder trees were planted in the area. As well as on-site biodiversity, they provide many ecosystem services, including carbon capture, the protection and enhancement of water quality, wider habitat linkage, landscape enhancement, and opportunities for outdoor recreation, which itself promotes contact with the natural world, physical and mental well-being, and outdoor learning.</p>	Meath County Council, Biodiversity Officer, Local Representatives, Greenbelt Ltd





Summary of Selection of Actions




In consultation with the URBACT Local Group (ULG), a total of eleven (11) specific objectives were identified, complemented by twenty (20) proposed actions, six (6) testing actions with nine (9) actions finally chosen for implementation.

Summary Table for Navan

Strategic Objective	Area of Intervention	Specific Objective	Proposed Actions	Testing Actions	Chosen Actions
 Promote Energy Efficiency, Retrofitting and Renewable Energy Uptake	Energy Efficiency and Renewable Energy	<ul style="list-style-type: none"> → Retrofit 30% of public buildings to BER B by 2030 → Reduce CO₂ emissions from Navan town energy profile. → Reduce the energy consumption of public lighting by 50% by switching to LED technology by 2027 	<ul style="list-style-type: none"> → Energy Retrofit Local Government Buildings. → Promote and Support SEC in Navan → Launch public awareness campaigns. → Create pilot energy poverty project in Navan. → LED upgrade to public lighting 	<ul style="list-style-type: none"> → Home Energy Saving Kits → NZEB Retrofit Expo 	<ul style="list-style-type: none"> → Establish a Sustainable Energy Community (SEC) in Navan → Distribution of excess renewable energy to social housing → Establish Navan as a Digital Twin Town
 Promote Sustainable Urban Mobility	Sustainable Transport and Mobility	<ul style="list-style-type: none"> → Launch public awareness campaigns. → Establish school cycle and pedestrian bus system → Re-allocate road space and parking space to create more pedestrian/cycle space. → Provide cyclist facilities such as bike shelters and bike repair stations in town centre areas. → Extend pedestrian/cycling network. 	<ul style="list-style-type: none"> → Launch public awareness campaigns. → Establish school cycle and pedestrian bus system. → Re-allocate road space and parking space to create more pedestrian/cycle space. → Provide cyclist facilities such as bike shelters and bike repair stations in town centre areas. → Extend pedestrian/cycling network. 	<ul style="list-style-type: none"> → Bike Repair & Water refill stations 	<ul style="list-style-type: none"> → Pedestrianise Trimgate Street, Navan → Establish a cycle, pedestrian and bus system for schools in Navan

Strategic Objective	Area of Intervention	Specific Objective	Proposed Actions	Testing Actions	Chosen Actions
 Protect and Restore Biodiversity	Biodiversity and Green Infrastructure	<ul style="list-style-type: none"> → Establish new urban green spaces by 2030 → Increase urban tree canopy by 20% by 2030 → Ensure the incorporation and inclusion of biodiversity mitigation and adaption actions into the de-sign and delivery of urban regeneration plans. 	<ul style="list-style-type: none"> → Launch public awareness campaigns. → Identify land for parks → Secure funding for green space development. → Initiate rewilding programmes. → Increase urban tree canopy in Navan by 20% by 2030. 	<ul style="list-style-type: none"> → Liscartan native woodland tree planting 	<ul style="list-style-type: none"> → Increase tree coverage in Navan → Develop an Amenity/ Recreational Area at the Native Woodland at Liscartan
 Encourage Circular Economy and Resource Efficiency	Circular Economy and Resource Efficiency	<ul style="list-style-type: none"> → Reduce landfill waste by 25% by 2030. → Facilitate the establishment of at least one community reuse and repair hub by 2030. → Decrease food waste per household by 15% by 2030 through awareness campaigns and food waste reduction programmes. 	<ul style="list-style-type: none"> → Launch public awareness campaigns. → Expand kerbside recycling programmes. → Establish a community repair hub. → Provide awareness on sustainable clothing alternatives. → Provide awareness on sustainable food practices. 	<ul style="list-style-type: none"> → Circular Food Campaign → Green Fashion Campaign 	<ul style="list-style-type: none"> → Develop a centre of business excellence → Develop a Community Reuse and Repair Hub

Subsequently, the ULG members participated in a voting process to select their most preferred and implementable actions, aligning with the previously defined vision and strategic objectives. This rigorous selection process resulted in the identification of nine (9) key actions, for which implementation details have been further developed. These selected actions are representative of the strategic objectives, comprising three (3) actions focused on Energy, two (2) on Sustainable Transport, two (2) on Biodiversity, and two (2) on Circularity.

Each action is presented in a one-page panel format, inclusive of its unique identification code, and framed by its relevant strategic objective and intended impact. The anticipated outcome of each action is thoroughly described and accompanied by three specific attributes: Green , Gender , and Digitalisation . These three cross-cutting components

were determined during a ULG Core Group meeting to be essential for ensuring an equitable and successful transition to sustainability.

Each action is visually supported by an impact-effort matrix. This matrix serves to illustrate the correlation between the required level of effort for implementation and the anticipated impact.

Finally, a comprehensive action planning table is provided. This synthesized roadmap details each action through a breakdown of sub-actions (specific implementation steps), key partners, a detailed risk assessment, cost analysis, potential funding sources, monitoring indicators, and a projected timeline. All actions are initiated by Meath County Council, and their respective execution durations are estimated within the timeline based on their assessed implementation difficulty.



Risk Assessment Matrix:

		Impact				
		Severity ---->				
		1 Negligible	2 Minor	3 Moderate	4 Significant	5 Severe
<---- Likelihood	1 Very Unlikely	Low 1	Low 2	Low 3	Low 4	Low 5
	2 Unlikely	Low 2	Low 4	Medium 6	Medium 8	Medium 10
	3 Moderate Likely	Low 3	Medium 6	Medium 9	Medium - High 12	High 15
	4 Likely	Low 4	Medium 8	Medium - High 12	High 16	High 20
	5 Very Likely	Low 5	Medium 10	High 15	High 20	High 25

Section 3

Action Planning



Planned Actions



1.0 Strategic Objective: Energy Efficiency and Renewable Energy

1.1 Action: Establish a Sustainable Energy Community (SEC) in Navan

Specific Objective and Intended Impact

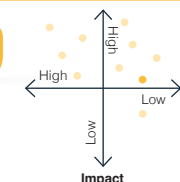
This action focuses on establishing an active Sustainable Energy Community to develop and implement an Energy Master Plan.

- **Improved Energy Efficiency:** The Sustainable Energy Community (SEC) would identify energy efficiency and retrofitting opportunities within the Navan community.
- **Emission Reduction:** Reduce emissions from energy usage across Navan town.
- **Education:** Building capacity in the areas of energy efficiency and retrofitting opportunities.

Cross-Cutting Theme



Impact – Effort



Action Planning

Implementation Steps	Key Partners	Risk Assessment			Timeline
		Likelihood	Impact	Risk Level	
Secure funding and resources	Meath County Council	1	4	4 Medium	Jan 2026
Identify suitable stakeholders to participate in the SEC	Businesses, Community Groups, Residents, Public Bodies, SEAI, SEC Mentor	4	4	16 Significant	Jan – June 2026

Action Planning

Implementation Steps	Key Partners	Risk Assessment			Timeline
		Likelihood	Impact	Risk Level	
Planning and Design of Energy Master Plan <ul style="list-style-type: none"> → Develop an energy awareness programme for the SEC and Navan community. → Appoint a consultant to complete sample audits, profiling and opportunity identification. → Develop an Energy Masterplan for Navan that identifies energy saving and retrofitting opportunities. 	SEAI, SEC Mentor, Businesses, Community Groups, Residents	3	4	12 Medium - High	July 2026 – June 2027
Engagement <ul style="list-style-type: none"> → Public consultations and awareness on inputs and supports energy efficiency and retrofitting opportunities. → Launch campaign promoting the Energy Master Plan. 	SEAI, SEC Mentor, Meath County Council	1	4	4 Medium	Jan 2026 – Dec 2027

Cost and Funding

Item	Cost	Funding Source	Amount	Status
Consultancy & Communication Fees	€25,000	SEAI Grant Funding	€25,000	Seeking Funding
Total Cost				€25,000

Monitoring Indicators

Outputs

- Number of businesses, community groups and residents participating
- Publication of the Navan Energy Master Plan
- Improvement on the Baseline Emission Inventory for Navan DZ



1.0 Strategic Objective: Energy Efficiency and Renewable Energy

1.2 Action: Distribution of excess renewable energy to social housing

Specific Objective and Intended Impact

This action focuses on distribution of surplus renewable energy to heat domestic water within social housing area/s in Navan.

- **Improved Energy Efficiency:** Maximising the use of excess renewable energy.
- **Emission Reduction:** Utilising renewable energy directly reduces the carbon footprint of social housing.
- **Reduced Energy Poverty:** Providing free hot water directly reduces the energy bills for affected low-income households, offering immediate and tangible relief from energy poverty.
- **Scalable Solution:** Potential for wider deployment within Navan.

Cross-Cutting Theme



Impact – Effort



Action Planning

Implementation Steps	Key Partners	Risk Assessment			Timeline
		Likelihood	Impact	Risk Level	
Secure funding and resources	Meath County Council	1	4	4 Medium	Jan 2026
Site Selection and Assessment <ul style="list-style-type: none"> → Identify 50 suitable homes within Navan from the social deprivation index. → Conduct site assessments to confirm suitability for technology installation. 	Meath County Council – Housing and Climate Action	4	4	16 Significant	Jan – March 2026

Action Planning

Implementation Steps	Key Partners	Risk Assessment			Timeline
		Likelihood	Impact	Risk Level	
Engagement <ul style="list-style-type: none"> → Collaborate with Meath County Council's Housing Section and contractors. → Collaborate with residents. → Launch a marketing campaign to promote the project and energy poverty awareness. → Organise events and energy efficiency initiatives to encourage residents' awareness and engagement. 	Meath County Council, CloudEnergy, residents	3	4	12 Medium - High	Feb 2026 – Sept 2026
Installation of Technology <ul style="list-style-type: none"> → Appoint contractor to install and demonstrate the energy units to residents. 	Meath County Council – Housing and Climate Action, CloudEnergy, residents	4	4	16 Significant	April 2026 – July 2026

Cost and Funding

Item	Cost	Funding Source	Amount	Status
Site Assessment and Technology Installation	€17,500	MCC – Climate Action Strategy	€17,500	Conditional Approval
Technology – device and operation	Cost covered under social enterprise programme	Energy Cloud	-	Funding Secured
Total Cost				€17,500

Monitoring Indicators

Outputs

- Number of houses with devices installed
- Reduced energy bills for social housing residents
- Improvement on the Baseline Emission Inventory for Navan DZ



1.0 Strategic Objective: Energy Efficiency and Renewable Energy

1.3 Action: Establish Navan as a Digital Twin Town

Specific Objective and Intended Impact

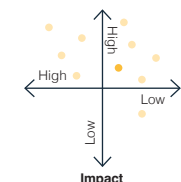
This action focuses on establishing Navan as a Digital Twin Pilot Town to enable modelling on how environmental improvements and street remodelling could impact the visual and utility aspects of Navan.

- **Improved Engagement and Participation:** Residents, professionals and visitors will be able to use 3D models to get greater understanding of the proposed future developments and provide feedback on the redevelopment of areas of the town.
- **Improved Equity and Inclusion:** 3D modelling of the development in a Digital twin will create a realistic point of view for people of all ages and abilities.
- **Capacity Building:** The initial Digital twin area will kick off a wider modelling of Navan Town Centre that could be integrated into further modelling of infrastructure development, traffic flows, environmental monitoring such as CO₂ emissions, air quality, surface water management and other related climate projects.

Cross-Cutting Theme



Impact – Effort



Action Planning

Implementation Steps	Key Partners	Risk Assessment			Timeline
		Likelihood	Impact	Risk Level	
Secure funding and resources	Meath County Council	2	3	6 Medium	June – July 2026
Planning and Design → Platform design, objectives, MIMS and data API addresses to integrate into model. Incorporate features that support active travel, biodiversity, and energy efficiency.	Meath County Council	2	3	6 Medium	Oct 2026 – Feb 2027

Action Planning

Implementation Steps	Key Partners	Risk Assessment			Timeline
		Likelihood	Impact	Risk Level	
Site Selection and Assessment <ul style="list-style-type: none"> → Identify suitable sites for the initial Digital twin modelling within Navan. Including conducting site assessments to compare feasibility and functionality to determine most appropriate site. → Upskill staff on the opportunities from Digital Twins and determine what data is currently or could be made available to include into the model. 	Meath County Council, Businesses, Community Groups, Residents, Public Bodies	2	3	6 Medium	July 2026 – September 2026
Construction and Development <ul style="list-style-type: none"> → Commence online portal preparation and construction of model. 	Meath County Council	2	3	6 Medium	Feb 2027 - June 2027
Engagement <ul style="list-style-type: none"> → Organise events and activities to encourage community use and engagement to get feedback on proposed developments. → Launch a communication campaign to promote the resource. 	Meath County Council, Businesses, Community Groups, Residents	3	4	12 Medium - High	Mar 2026 - June 2027

Cost and Funding

Item	Cost	Funding Source	Amount	Status
Consultancy and Platform development	€15,000	MCC - Annual and Capital Budgets	-	Conditional Approval
Training	€5,000			
Communications and Integration of Data Sets	€5,000			
Total Cost				€25,000

Monitoring Indicators

Outputs

- The number of community people and businesses that engage with the model.
- The density and number of wildlife habitat features installed such as Parklets, new tree lines and other habitat enhancements.



2.0 Strategic Objective: Sustainable Transport and Mobility

2.1 Action: Pedestrianise Trimgate Street, Navan

Specific Objective and Intended Impact

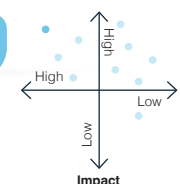
This action focuses on pedestrianising Trimgate Street to increase active travel, reduce emissions and enhance recreational and social spaces for residents.

- **Improved Quality of Life:** Enhanced recreational opportunities and social spaces for residents leading to increased physical activity.
- **Biodiversity support:** Enhancement of native habitats for local wildlife through the creation of parklets in car parking spaces along Trimgate Street during the pedestrianisation.
- **Reduced emissions:** Reducing transport related emissions through increased active travel.

Cross-Cutting Theme



Impact – Effort



Action Planning

Implementation Steps	Key Partners	Risk Assessment			Timeline
		Likelihood	Impact	Risk Level	
Secure funding and resources	Meath County Council	2	4	8 Medium	Jan – Feb 2026
Site Selection and Assessment Identify suitable streets for pedestrianisation within Navan and conduct traffic flow analysis to measure projected traffic impact.	Meath County Council, NTA, Local Businesses, Local Community	1	3	3 Low	Jan – March 2026

Action Planning

Implementation Steps	Key Partners	Risk Assessment			Timeline
		Likelihood	Impact	Risk Level	
Develop a detailed site plan, including walking and cycling paths, seating areas, biodiversity features and recreational facilities.	Meath County Council, NTA, Local Businesses, Local Community	1	3	3 Low	March – July 2026
Engage through public consultations and awareness campaigns to gather input and support from local residents, businesses and stakeholders.	Meath County Council, Local Businesses, Local Community	4	4	16 Significant	June 2026 – September 2027
Construction and Installation Redevelop streetscape, install green space and flower bedding with provision for amenities.	Meath County Council, NTA	3	4	12 Medium - High	Oct 2026 – September 2027

Cost and Funding

Item	Cost	Funding Source	Amount	Status
Consultancy and Communication Fees	€84,000	Meath County Council & NTA	€84,000	Conditional Approval
Site Development and Construction	€500,000	Meath County Council & NTA	€500,000	Seeking Funding
Total Cost				€584,000

Monitoring Indicators

Outputs

- Pedestrian Utility: The amount of people utilising the pedestrianised section of Trimgate Street
- Sustainable Development: Reduced carbon footprint - Lower emissions from increased active travel and reduced reliance on private vehicles.
- Biodiversity Enhancement: Number of wildlife habitat features installed with parklets and other habitat enhancements.
- Healthier Outdoor Recreation: Increased pedestrian utility and strengthened community bonds through shared use of the pedestrianised street.



2.0 Strategic Objective: Sustainable Transport and Mobility

2.2 Action: Establish a cycle, pedestrian and bus system for schools in Navan

Specific Objective and Intended Impact

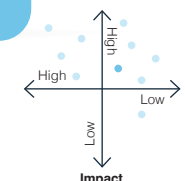
This action focuses on establishing a combined cycle, pedestrian, and bus system for school children in Navan, creating a network that prioritizes walking, cycling, and using public transport for school travel

- **Improved Quality of Life:** Enhanced recreational opportunities and social spaces for residents.
- **Healthier Lifestyles:** Increased physical activity through increased active travel and an increase in the pedestrian and cycle pathway network.
- **Emission Reductions:** Reduction of CO₂ emissions through reduced car usage and increased active travel.

Cross-Cutting Theme



Impact – Effort



Action Planning

Implementation Steps	Key Partners	Risk Assessment			Timeline
		Likelihood	Impact	Risk Level	
Secure funding and resources	Meath County Council	2	3	6 Medium	Jan 2026
Site Selection and Assessment: Identify suitable school routes for the cycle, pedestrian and bus systems within Navan and conduct traffic flow analysis for increased pedestrian/cycling usage along the routes.	Meath County Council, Road Safety Authority (RSA), NTA, Local Schools, Local Community	1	4	4 Medium	Jan – March 2026

Action Planning

Implementation Steps	Key Partners	Risk Assessment			Timeline
		Likelihood	Impact	Risk Level	
Develop detailed route plan, including existing and prospective walking and cycling paths and bus routes ensuring access to schools and education centres.	Meath County Council, RSA, NTA, Local Schools	2	4	8 Medium	March – July 2026
Collaborate with community groups, schools, and the RSA to create a volunteer steward programme with parents/teachers to enable the system.	Meath County Council, RSA, Local Schools, Local Community	2	4	8 Medium	June 2026 – Aug 2026
Construction and Installation: Install signage and any required road safety measures with educational displays about active travel, the new cycle & pedestrian system.	Meath County Council, NTA, RSA, Local Schools, Local Community	1	4	4 Medium	Oct 2026 – Feb 2027

Cost and Funding

Item	Cost	Funding Source	Amount	Status
Consultancy and Communication Fees	€40,000	Meath County Council & NTA	€40,000	Seeking Funding
Site Development and Construction	€30,000	Meath County Council & NTA	€30,000	Seeking Funding
Total Cost				€70,000

Monitoring Indicators

Outputs

- Vehicle Reduction: The number of children utilising the cycling/pedestrian/bus system for school commutes in place of private vehicles.
- The number of schools, community groups and residents listed as stewards to implement the system.
- Improved air quality from reduction of private vehicles in Navan.
- Emissions Reduction: Reduction of transport emissions from the increase of active travel and public transport usage.



3.0 Strategic Objective: Biodiversity and Green Infrastructure

3.1 Action: Increase tree coverage in Navan

Specific Objective and Intended Impact

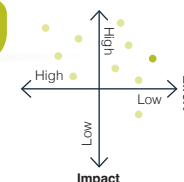
This action focuses on increasing tree coverage in Navan through afforestation of the urban area and surrounding hinterland.

- **Emission Reduction:** Reduced greenhouse gas emissions through increased tree coverage and carbon sequestration.
- **Healthier Lifestyles:** Improved air quality, urban cooling effect and improved visual aesthetic will contribute to improved public health.
- **Biodiversity support:** Enhancement of native habitats for local wildlife through the creation of forested areas in the Navan area.

Cross-Cutting Theme



Impact – Effort



Action Planning

Implementation Steps	Key Partners	Risk Assessment			Timeline
		Likelihood	Impact	Risk Level	
Secure funding and resources.	Meath County Council, Department of Agriculture (DAFM)	3	4	12 Medium - High	Jan – Nov 2026
Site Selection and Assessment Identify suitable Council-owned locations for afforestation in Navan town and the surrounding area and conduct environmental impact assessments to ensure minimal disruption to existing ecosystems.	Meath County Council, DAFM, Local Community, Environmental NGOs	3	4	12 Medium - High	March – June 2026

Action Planning

Implementation Steps	Key Partners	Risk Assessment			Timeline
		Likelihood	Impact	Risk Level	
Planning and Design Develop detailed site plans, including existing public infrastructure services and incorporate features supporting biodiversity.	Meath County Council, DAFM, Local Community	2	3	6 Medium	June – Nov 2026
Planting and Development Clear and prepare the sites, retaining existing native vegetation, plant native tree species and install signage and protective fencing to safeguard sites.	Meath County Council, Appointed Contractor	2	4	8 Medium	March - April 2027
Promotion and Awareness: Launch campaigns to promote awareness and organise events and activities to encourage community engagement.	Meath County Council, Local Community, Environmental NGOs	1	2	2 Low	May 2027

Cost and Funding

Item	Cost	Funding Source	Amount	Status
Consultancy and Communication Fees	€10,000	Meath County Council, DAFM	€10,000	Seeking Funding
Site Development and Planting	€40,000	Meath County Council, DAFM	€40,000	Seeking Funding
Annual Maintenance	€20,000	Meath County Council, DAFM	€20,000	Seeking Funding
Total Cost				€70,000

Monitoring Indicators

Outputs

- Trees Planted: Number of trees planted: Count of trees planted and percentage tree cover of Navan area.
- Environmental Impact: Improved air quality, soil health, and water management, improved biodiversity status.
- Emission Reduction: Amount of greenhouse gases reduced and sequestered since trees cover increase.



3.0 Strategic Objective: Biodiversity and Green Infrastructure

3.2 Action: Develop an Amenity/Recreational Area at the Native Woodland at Liscartan

Specific Objective and Intended Impact

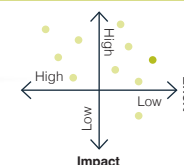
This action focuses on developing a recreational and educational space for residents on a recently planted native woodland at Liscartan.

- **Improved Quality of Life:** Enhanced recreational opportunities and social spaces for residents.
- **Healthier Lifestyles:** Increased physical activity through accessible outdoor spaces.
- **Biodiversity Support:** Preservation and enhancement of native habitats for local wildlife.

Cross-Cutting Theme



Impact – Effort



Action Planning

Implementation Steps	Key Partners	Risk Assessment			Timeline
		Likelihood	Impact	Risk Level	
Secure funding and resources.	Meath County Council, Department of Agriculture (DAFM)	3	4	12 Medium - High	Jan – June 2026
Site Selection and Assessment Identify suitable locations for the amenity area within native woodland and conduct environmental impact assessments.	Meath County Council, DAFM	2	3	6 Medium	March – June 2026
Planning and Design Develop detailed site plans, including existing public infrastructure services and incorporate features supporting biodiversity.	Meath County Council, DAFM, Local Community	2	3	6 Medium	June – Oct 2026

Action Planning

Implementation Steps	Key Partners	Risk Assessment			Timeline
		Likelihood	Impact	Risk Level	
Forest Planning and Development Clear and prepare the site, plant native trees, shrubs, and other vegetation to enhance biodiversity and apply for DAFM NeighbourWood Scheme in 2028.	Meath County Council, Appointed Contractor	2	4	8 Medium	Jan 2026 – Mar 2026
Recreational Construction and Development Construct paths, seating areas, and other recreational facilities and set up educational displays about local wildlife and sustainable practices.	Meath County Council, Appointed Contractor	3	4	12 Medium - High	Mar 2029 – May 2030
Promotion and Awareness Launch campaigns to promote awareness of the new amenity area and organise events and activities to encourage community engagement and usage.	Meath County Council, Local Community, Environmental NGOs	1	2	2 Low	May 2030

Cost and Funding

Item	Cost	Funding Source	Amount	Status
Consultancy and Communication Fees	€2,000	Meath County Council, DAFM	€2,000	Approved
Forest Planning and Development	€60,000	Meath County Council, DAFM	€60,000	Approved
Recreational Construction and Development	€40,000	Meath County Council, DAFM	€40,000	Seeking Funding
Annual Maintenance	€20,000	Meath County Council, DAFM	€20,000	Seeking Funding
Total Cost				€122,000

Monitoring Indicators

Outputs

- Area Developed: Kilometers of walking and cycling paths and number of recreational facilities: Count of benches, picnic areas, and other amenities installed.
- Usage Metrics: Number of people using the amenity area.
- Biodiversity Enhancement: Wildlife habitat features installed: Count of bird boxes, bat boxes, and other habitat enhancements.



4.0 Strategic Objective: Circular Economy and Resource Efficiency

4.1 Action: Develop a Centre of Business Excellence

Specific Objective and Intended Impact

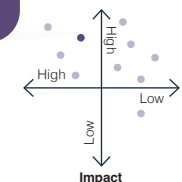
This action focuses on establishing the **Thrive Centre of Business Excellence** to encourage and support circular business practices and sustainable economic development.

- **Reduced Emissions:** Through the Thrive Centre, businesses will have supports available to reduce their emissions and carbon footprint.
- **Develop Skills:** The Thrive Centre will deliver focused programmes to businesses to assist them with their digital, circular and green journeys.
- **Networking:** The Thrive Centre will encourage networking, sharing of ideas and innovations, and the raising of awareness of what exactly neighbouring businesses have on offer, to allow for sourcing of materials, products and services at a more local level.

Cross-Cutting Theme



Impact – Effort



Action Planning

Implementation Steps	Key Partners	Risk Assessment			Timeline
		Likelihood	Impact	Risk Level	
Secure funding and resources.	Meath County Council	2	4	8 Medium	Aug – Sept 2024

Action Planning

Implementation Steps	Key Partners	Risk Assessment			Timeline
		Likelihood	Impact	Risk Level	
Site Acquisition and Development Identify suitable sites for the centre and conduct site assessments to compare feasibility and functionality to determine most appropriate site.	Meath County Council	3	4	12 Medium - High	Oct 2024 – Jan 2025
Building retrofit and installation of amenities.	Meath County Council	3	4	12 Medium - High	Jan – June 2025
Build training programmes, workshops, consultation and support programmes for businesses to utilise	Meath County Council	1	4	4 Medium	June – Aug 2025
Launch marketing campaigns and awareness media to promote the services and supports available in the centre.	Meath County Council	1	3	3 Low	Sept 2025

Cost and Funding

Item	Cost	Funding Source	Amount	Status
Site Acquisition, Development, Construction and Amenity Installation	€5,000,000	Meath County Council	€5,000,000	Funding Secured
Total Cost				€5,000,000

Monitoring Indicators

Outputs

- Number of small and medium enterprises utilising the centre facilities.
- Uptake of business supports, training, events and conferences held in the centre.
- Number of businesses availing of Green for Micro and LEAN grants to become more efficient and reduce their waste and emissions.



4.0 Strategic Objective: Circular Economy and Resource Efficiency

4.2 Action: Develop a Community Reuse and Repair Hub

Specific Objective and Intended Impact

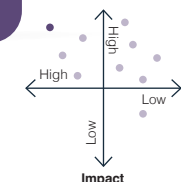
This action focuses on establishing a reuse and repair hub in Navan to provide a space to establish a community reuse network and provide workshops and awareness events that promote circular economy initiatives.

- Education: increased educational opportunities through the space for workshops and access to skilled expertise in reusing and repairing.
- Develop Circular Economy: The hub would be the focal point for the community reuse network and would develop the circular economy in Navan.
- Emission Reduction: Reduce emissions from waste and reduce landfill waste and associated emissions generated from Navan town.

Cross-Cutting Theme



Impact – Effort



Action Planning

Implementation Steps	Key Partners	Risk Assessment			Timeline
		Likelihood	Impact	Risk Level	
Secure funding and resources.	Meath County Council, EU Life Programme	4	4	16 Significant	Jan – April 2027
Site Acquisition and Development Identify suitable sites for the hub within Navan and conduct site assessments to compare feasibility and functionality to determine most appropriate site.	Meath County Council, Local Community	4	4	16 Significant	Jan – March 2028

Action Planning

Implementation Steps	Key Partners	Risk Assessment			Timeline
		Likelihood	Impact	Risk Level	
With community and stakeholder input, secure planning approval for the site incorporating features that support active travel, biodiversity, and energy efficiency.	Meath County Council, Local Community	3	4	12 Medium - High	Apr – Oct 2028
Construction and Amenity Installation Commence site preparation and construction of hub, install equipment, signage, facilities, and other amenities with educational displays about circular economy initiatives.	Meath County Council	3	4	12 Medium - High	Jan 2029
Launch marketing campaigns and awareness media to promote the new amenity area for community use.	Meath County Council, Local Community	1	3	3 Low	March 2029

Cost and Funding

Item	Cost	Funding Source	Amount	Status
Site Acquisition, Development, Construction and Amenity Installation	€1,100,000	Meath County Council, EU Life Funding	€1,100,000	Seeking Funding
Total Cost				€1,100,000

Monitoring Indicators

Outputs

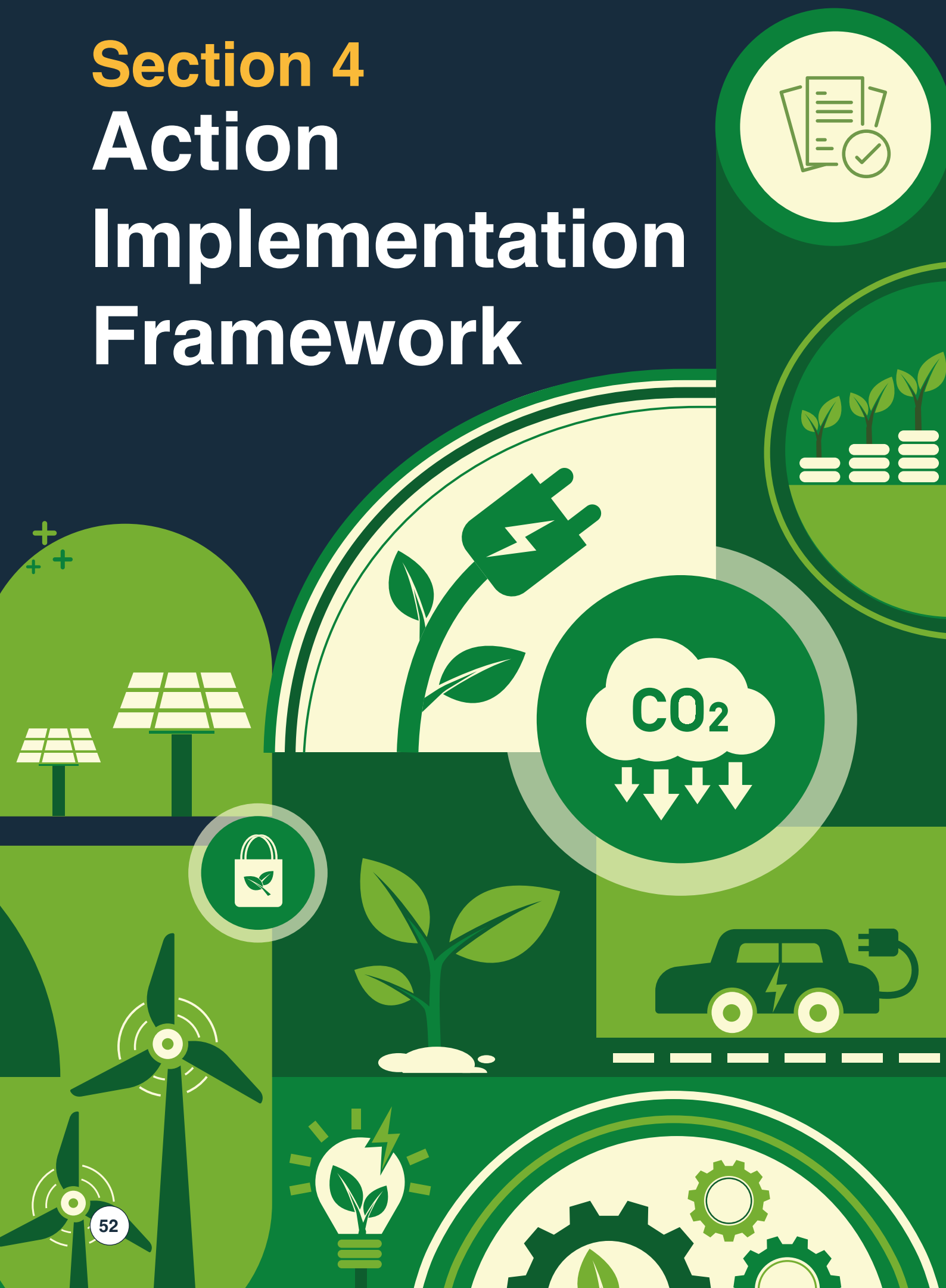
- Community Utility: Number of people and community groups utilising the reuse and repair hub through workshops, events, and demonstrations.
- Economic Development: Number of small and medium enterprises utilising hub facilities and economic development generated from hub presence
- Emissions Reduction: Carbon emissions avoided from reduced goods circulated at hub through processing, reusing and repairing items.

Section 4

Action

Implementation

Framework



1. Implementation Framework

The successful delivery of Navan's Integrated Action Plan (IAP) requires a clear implementation framework to translate its vision into concrete outcomes.

This framework details the structures and mechanisms guiding the IAP actions, aligning them with the town's sustainability goals and the In4Green network objectives.

It outlines the roles and responsibilities of key stakeholders, the governance structures established through a collaborative

URBACT co-creation process, and the financial instruments mobilized to support implementation.

Additionally, it incorporates systems for monitoring progress, managing risk, and facilitating continuous adaptation.



2. Governance

The implementation of Navan's Integrated Action Plan requires a multi-level, multi-stakeholder governance structure that ensures strategic alignment, operational co-ordination, and accountability. The structure reflects the collaborative approach developed during the URBACT co-creation process.

1.1 Lead Authority

Meath County Council – Climate Action Section

- Overall co-ordination and strategic oversight
- Integration with Meath's Climate Action Plan 2024–2029
- Responsibility for funding applications, procurement, and project compliance

1.2 URBACT Local Group (ULG) Governance

The ULG will continue to serve as the core participatory governance body and includes representatives from:

- Council departments (Planning, Economic Development, Biodiversity, Roads, Broadband)

- Community groups (Navan Cycling Initiative, Navan Men's Shed, PPN, Youth Work Ireland)
- Local businesses (Meath Chambers, Tara Mines, Solstice Renewables, SMEs)
- Education, youth and environmental organisations





Functions:

- Co-design and co-prioritisation of actions
- Quarterly review meetings to monitor progress
- Identifying implementation barriers and adaptive solutions
- Ensuring cross-sector alignment (public, private, community)



1.3 Action-Specific Governance

Each strategic objective includes a designated lead agency and partners:

Action Area	Lead	Key Partners
 Energy Efficiency and Renewable Energy	MCC Climate Action	SEAI, contractors, businesses, community groups
 Sustainable Mobility	MCC Roads & Active Travel	NTA, RSA, schools, businesses, community
 Biodiversity and Green Infrastructure	MCC Biodiversity & Community	NGOs, local community, DAFM
 Circular Economy	MCC Climate Action & Economic Development	EU LIFE, SMEs, community groups

1.4 Integration with External Governance

- **SEAI:** Technical assistance and funding for retrofits, SEC development, energy master planning
- **NTA and RSA:** Infrastructure design, safety standards and mobility funding
- **DAFM:** Forestry grants and biodiversity stewardship
- **EU Programmes (URBACT, LIFE, Interreg):** Innovation exchange, co-financing opportunities

3. Ongoing Stakeholder Engagement

Stakeholder mobilisation is critical to behavioural change, project acceptance, and long-term community impact.

2.1 Engagement Principles

- **Inclusivity:** Engage community groups, businesses, and vulnerable cohorts in decision-making
- **Transparency:** Clear communication of project timelines, impacts, and disruptions
- **Co-design:** Workshops for energy retrofits, pedestrianisation, circular economy, and biodiversity planning
- **Capacity Building:** Upskilling through training, workshops, and awareness campaigns

2.2 Engagement Methods

- Public consultations and town-hall workshops
- Community surveys and digital engagement via future Digital Twin
- Awareness campaigns (energy, mobility, biodiversity, circularity)
- Pilot demonstrations: NZEB Truck, home

energy kits, food waste, upcycling programmes

- Social media, radio, and print communication

2.3 Stakeholder Engagement Timeline

- **Quarterly engagement** for mobility, biodiversity, and energy projects
- **Annual reporting** to ULG and Council
- **Annual public review event** for project transparency

4. Overall Costings and Funding Strategy

All cost figures referenced within the detailed action planning tables.

3.1 Summary of Estimated Costs

Action	Estimated Cost
1.1 Sustainable Energy Community (SEC)	€25,000
1.2 Excess renewable energy to social housing	€17,500
1.3 Digital Twin Navan	€25,000
2.1 Pedestrianise Trimgate Street	€584,000
2.2 Cycle/Pedestrian/Bus School System	€70,000
3.1 Increase tree coverage	€70,000
3.2 Develop Amenity Area at Liscartan	€122,000
4.1 Centre of Business Excellence (Thrive)	€5,000,000
4.2 Community Reuse & Repair Hub	€1,100,000
Total Estimated Budget:	€7,013,500

3.2 Funding Sources

Local Funding

- Meath County Council Capital and Annual Budgets

National Funding

- SEAI Community Grants (Energy Master Plan, retrofits)
- Department of Agriculture (Native Woodland Scheme, biodiversity funding)
- NTA (Active Travel, pedestrianisation)
- RSA (Safety infrastructure for school mobility system)

EU Funding Streams

- URBACT IV
- LIFE Programme (circular economy and biodiversity)
- Interreg Atlantic / Northern Periphery
- Horizon Europe (digital and climate innovation)

Private/Community Co-funding

- Social enterprises (Energy Cloud)
- Local SMEs engaging in Thrive Centre training programmes
- Philanthropic and community environmental funds

5. Overall Implementation Timeline (2024–2030)

Short-Term (2024–2026)

- Launch Thrive Centre (2025)
- Develop SEC and Energy Master Plan
- Renewable energy surplus distribution to social housing
- Digital Twin prototype
- Pilot active travel routes and school bus/cycle system
- Initiate tree planting and Liscartan design works

Medium-Term (2026–2028)

- Pedestrianisation of Trimgate Street
- Full-scale development of cycling and walking routes
- Green infrastructure pilots (parklets, meadows, biodiversity projects)

Long-Term (2028–2030)

- Completion of Liscartan Amenity Area
- Full LED lighting transition
- Evaluation of SEC Energy Master Plan implementation
- Integration of Digital Twin into wider urban modelling
- Circular economy expansion (community repair network, business innovation clusters)
- Construction of Reuse & Repair Hub

6. Risk Assessment Management

5.1 Key Risks

Risk Category	Typical Risks Identified	Likelihood	Impact	Rating
Funding Risks	Delays in national/EU funding; cost inflation	Medium	High	Significant
Stakeholder Risks	Resistance to pedestrianisation, low uptake of retrofits, low engagement	Medium–High	High	Significant
Technical Risks	Data gaps for Digital twin, contractor delays, design changes	Medium	Medium	Medium
Governance Risks	Cross-department misalignment, staffing capacity	Medium	High	Medium - High
Environmental Risks	Biodiversity impacts during construction, flooding during works	Low–Medium	Medium	Medium
Regulatory Risks	Planning delays, procurement requirements	Medium	Medium	Medium

5.2 Mitigation Measures

- Early-stage funding applications aligned with budget cycles
- Transparent public consultation processes & codesign of plans
- Utilisation of pilot projects before full roll-out
- Cross-departmental working group chaired by Climate Action Section
- Early biodiversity assessments and environmental screening
- Procurement scheduling to avoid project delays

7. Monitoring and Reporting





Monitoring indicators in this framework are directly extracted from the Monitoring Indicators provided for each action.

6.1 Monitoring Structure

- **Climate Action Section:** Lead for data collection and annual reporting
- **ULG:** Oversight and validation of monitoring data

- **Project Leads:** Provide quarterly progress reports on KPIs to the Climate Action Section
- **Council Management Team:** Reviews progress annually

6.2 Key Performance Indicators (KPIs)

Action Area	Lead
 Energy Efficiency and Renewable Energy Number of buildings participating in SEC	<ul style="list-style-type: none"> → Publication and adoption of Navan Energy Master Plan → Reduction in baseline energy emissions → Number of homes benefiting from renewable energy redistribution
 Sustainable Transport and Mobility	<ul style="list-style-type: none"> → Uptake of cycling/pedestrian/bus school system → Number of EV chargers, kilometres of active travel routes → Pedestrian counts on Trimgate Street → Vehicle reduction levels in the town centre
 Biodiversity and Green Infrastructure	<ul style="list-style-type: none"> → Number of trees planted; % increase in tree canopy → Area of new green spaces developed → Biodiversity features installed (bat boxes, meadows, parklets)
 Circular Economy and Resource Efficiency	<ul style="list-style-type: none"> → Number of users of the Reuse & Repair Hub → Tonnes of material diverted from landfill → Number of businesses using Thrive Centre supports

6.3 Reporting Cycle

- **Annual IAP Report** published to the public
- **Mid-term Review (2027)**
- **Final Evaluation (2030)** aligned with the Climate Action Plan 2024–2029

This Implementation Framework operationalises the Navan Integrated Action Plan by establishing a clear path from strategic objectives to deliverable actions. It ensures:

- Strong governance and coordination,
- Meaningful stakeholder engagement,
- Robust funding and timeline management,
- Proactive risk mitigation, and
- Transparent monitoring and reporting.

Collectively, these integrated elements establish a framework that ensures Navan's green transition is practical, effectively governed, and broadly inclusive. The approach is designed to align seamlessly with both national and broader European climate ambitions.

This IAP provides a clear, strategic roadmap intended to facilitate long-term, sustainable change. It addresses existing environmental challenges through structured innovation, robust collaboration among stakeholders, and meaningful community engagement.



comhairle chontae na mí
meath county council



THE GLOBAL GOALS



**WE'RE
TAKING
CLIMATE
ACTION**