



# BRASOV

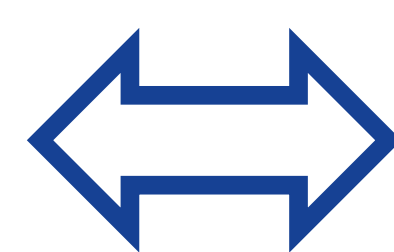
## Braşov in a nutshell

Country and region	Romania, Centru
Population and its development	237.589 (2021)
Pupils' share at population	42.551 (18%)
Size	187 km <sup>2</sup>
Density	1271 / km <sup>2</sup>
City structure	flat area with mountains and valley at southern edge
No of educational facilities	85
School choice model	proximity rule, but not working



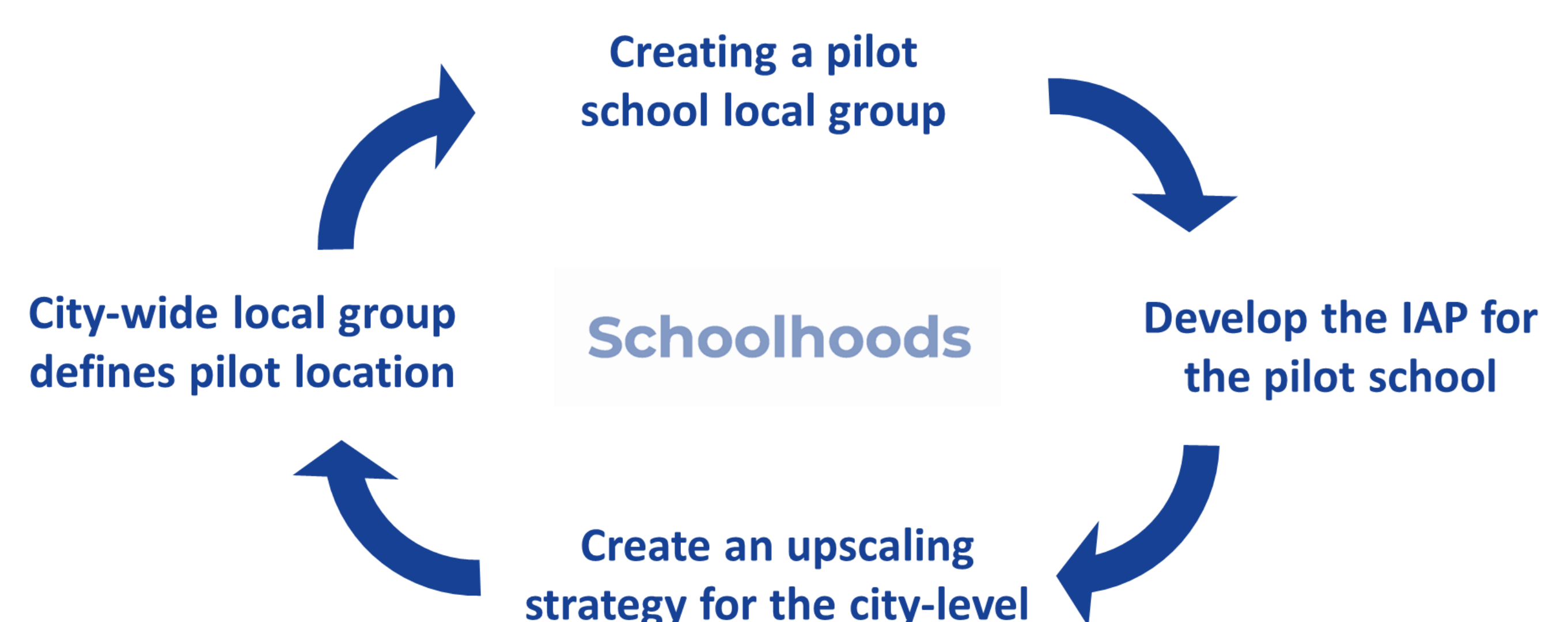
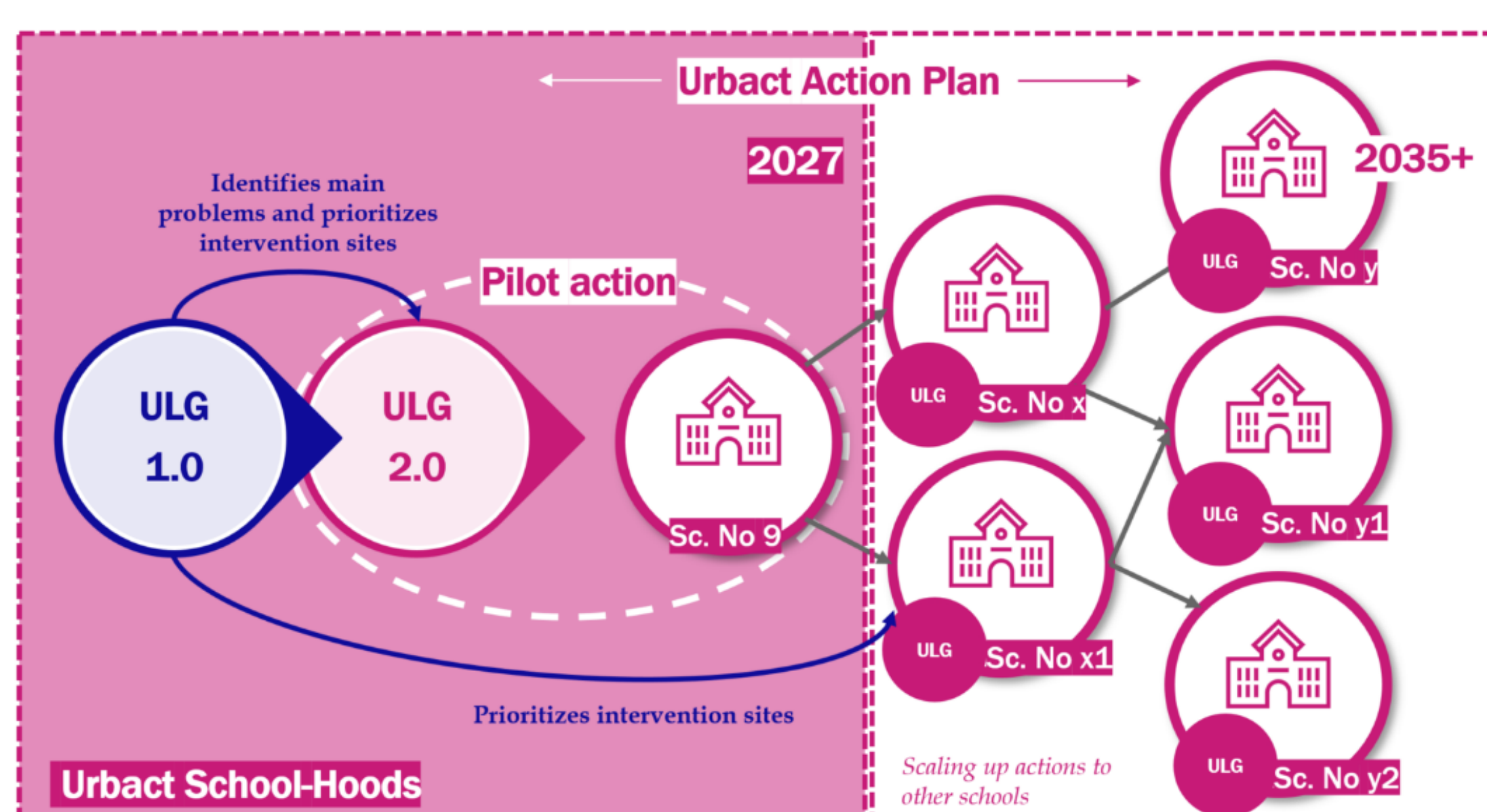
## Main Challenge and Main Goal

40% of pupils arrive at school by car



Less than 30% of trips to school are made by car in 2027

## About the planning process



## The Action Highlight – promote a legal change



Tackling the legal frame that children are prohibited to cycle on public streets of any kind until the age of 14.

- ⇒ promote a change of the legal framework
  - ⇒ by conferences and meetings to push the topic on central government agenda
  - ⇒ by a comparative study on cycling laws of other countries

## What has been innovative in Braşov?



The idea of a Schoolbus Classroom for mobility lessons and small events

⇒ „yet in development“

Schoolhoods

URBACT



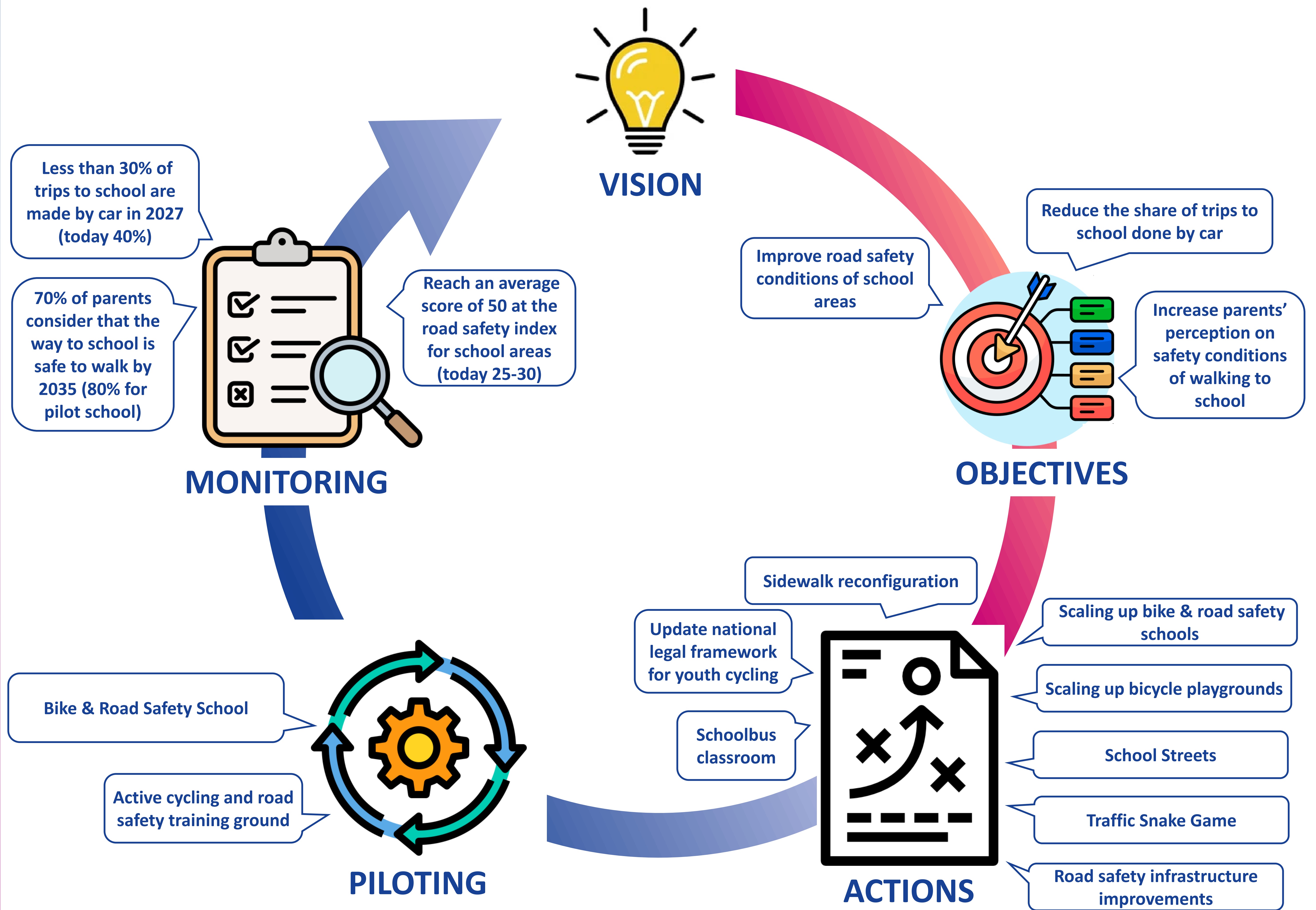
Co-funded by  
the European Union  
Interreg





# BRASOV

*Every pupil has the opportunity to walk, cycle or take public transport to the school and back, in a safe and friendly environment.*



Bike & Road Safety School



School No 9 (grades 1-8)

Active cycling and road safety training ground



**Schoolhoods**

**URBACT**



Co-funded by  
the European Union  
Interreg