

BRNO

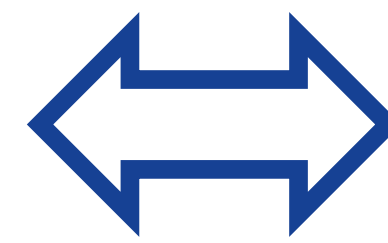
Brno in a nutshell

Country and region	Romania, Centru
Population and its development	237.589 (2021)
Pupils' share at population	42.551 (18%)
Size	187 km ²
Density	1271 / km ²
City structure	flat area with mountains and valley at southern edge
No of educational facilities	85
School choice model	proximity rule, but not working



Main Challenge and Main Goal

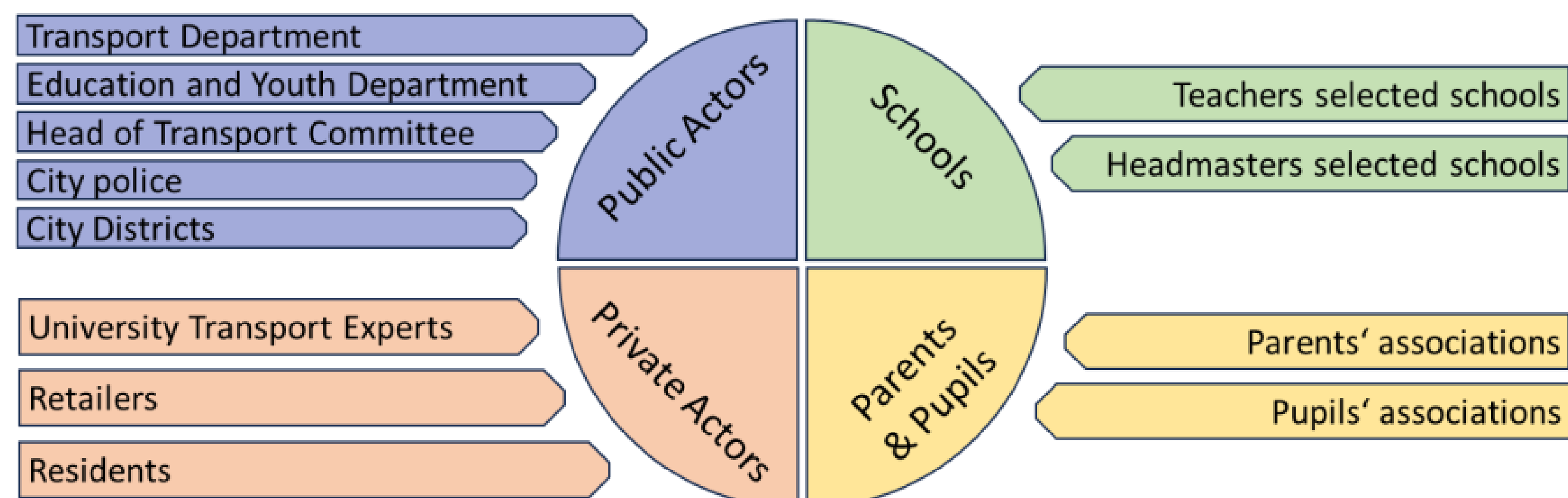
15-20% of parents are driving their children to school by car



Increase the proportion of children getting to and from school using active modes"

About the planning process

Brno operated the planning process in ULGs per elementary schools: one for ZŠ Tuháčkova and ZŠ Krásného each.



ULG meeting in ZŠ Tuháčkova



ULG meeting in ZŠ Krásného

Brno are the Queens of Testing Actions!

Pedestrian crossings



Pedestrian corridors



Kiss+Ride stops



Scooter parking



Street murals



Brno Dragon Game – sustainably to school



What has been innovative in Brno?

„Employ intensive planning and testing in two schools to arrive at blueprints for other schools in Brno.“

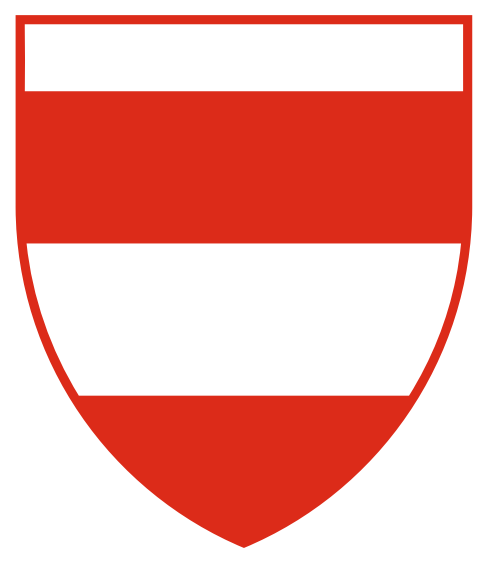
„Apply testing activities as a trigger to raise awareness of decision makers and creating attention on the topic of school mobility.“

Schoolhoods

URBACT

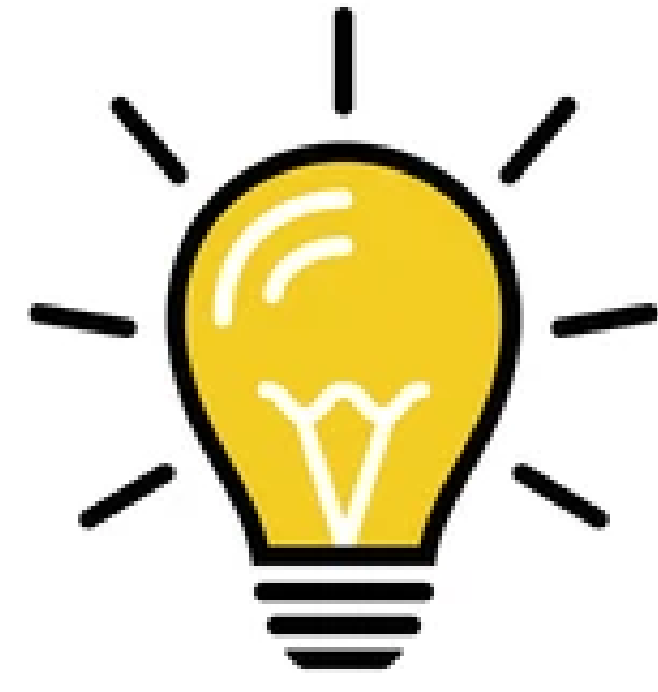


Co-funded by
the European Union
Interreg



BRNO

By 2035, all pupils in Brno have the opportunity to take an active way to school, supported by safe and calm surroundings.



VISION

78% of children getting to and from school by active modes by 2035 (70% in 2024)

85% of pupils perceive the way to school as attractive by 2035 (75% in 2024)

70% of children intend to walk or cycle to school INSTEAD of car use by 2035 (60% in 2024)



MONITORING

75% of pupils commute to school on their own by 2035 (65% in 2024)

Painting on sidewalks

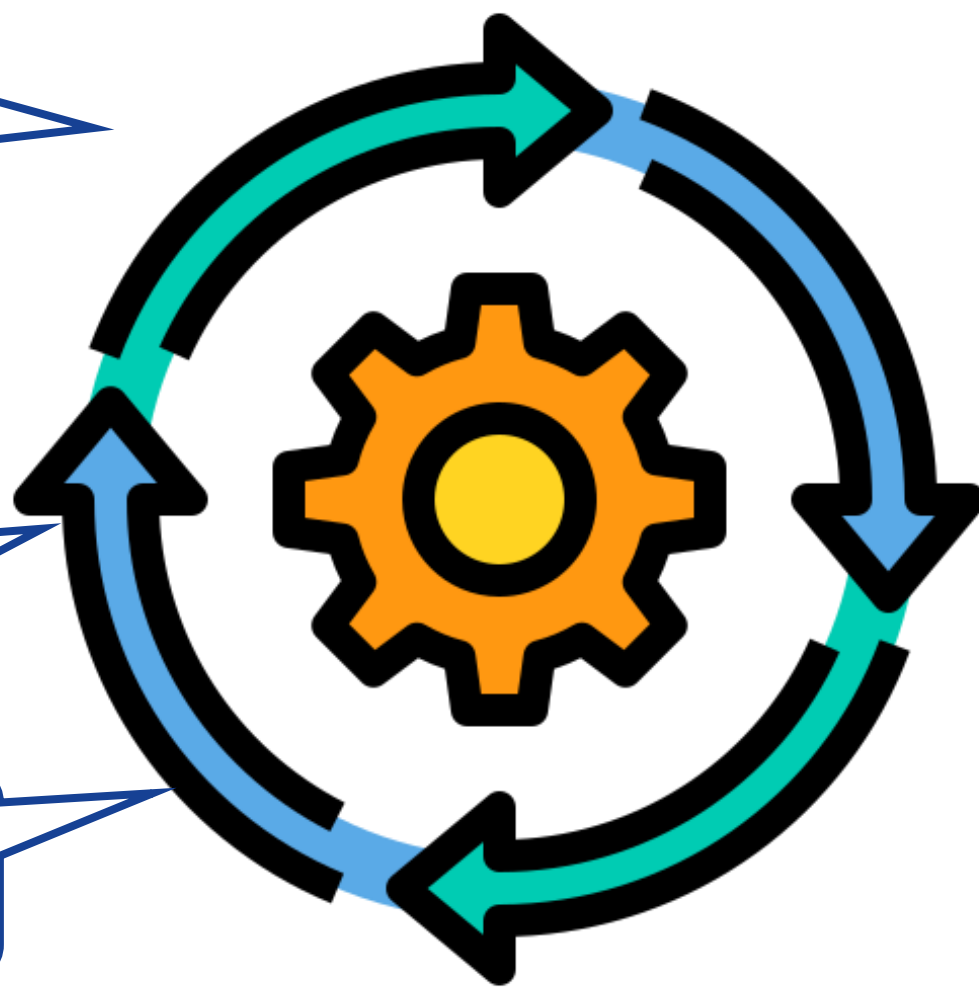
New zebra crossings

Pedestrian corridor

Creation of Kiss+Ride

Scooter stand in schools

Brno Dragon Game



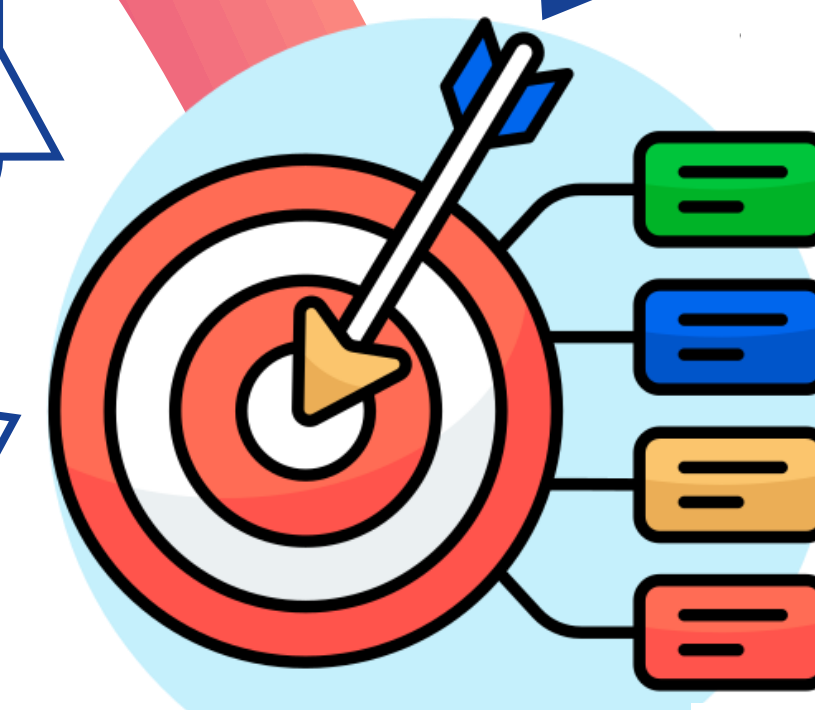
PILOTING

Improve safety, accessibility and child-friendliness of school travel routes

Increase interest of pupils and parents to choose active modes for school commutes

Increase the proportion of children getting to and from school using active modes

Improve the ability of pupils to use active modes safely and on their own



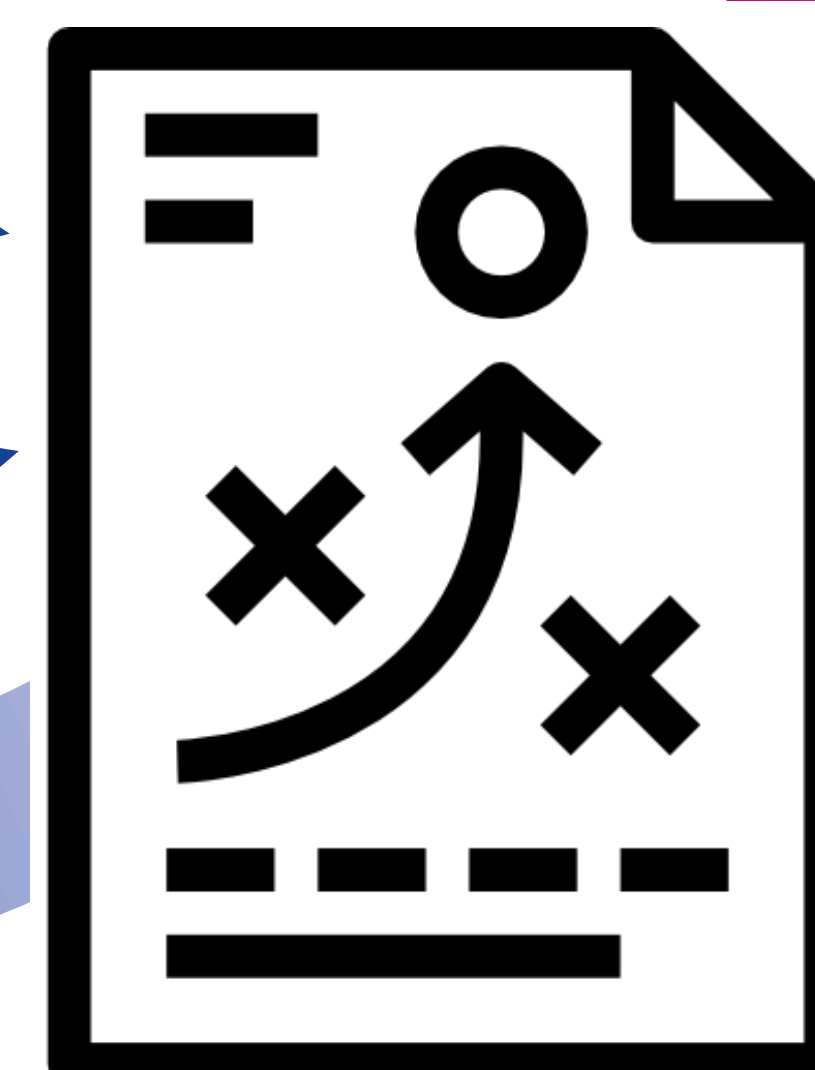
OBJECTIVES

School Streets

Traffic Education

Brno Mobility Boxes

PediBus & BiciBus



ACTIONS

Security trainings for pupils

Safe location of parking spaces

Bicycle crossings

School Outdoor Playgrounds

Green school environments

Pedestrian Corridor



Tuháčkova Elementary School

Scooter Stands



Krásného Elementary School

School Streets



Tuháčkova and Krásného Elementary Schools

Painting on Sidewalks



Krásného Elementary School

Schoolhoods

URBACT



Co-funded by
the European Union
Interreg