



# PARMA

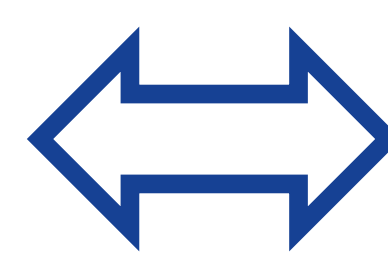
## Parma in a nutshell

Country and region	Italy, Emilia-Romagna
Population and its development	196.741 (2023), stable
Pupils' share at population	26.478 (13%)
Size	260,6 km <sup>2</sup>
Density	952 / km <sup>2</sup>
City structure	flat area and concentric structure
No of schools	116
School choice model	free choice of school with priority following proximity



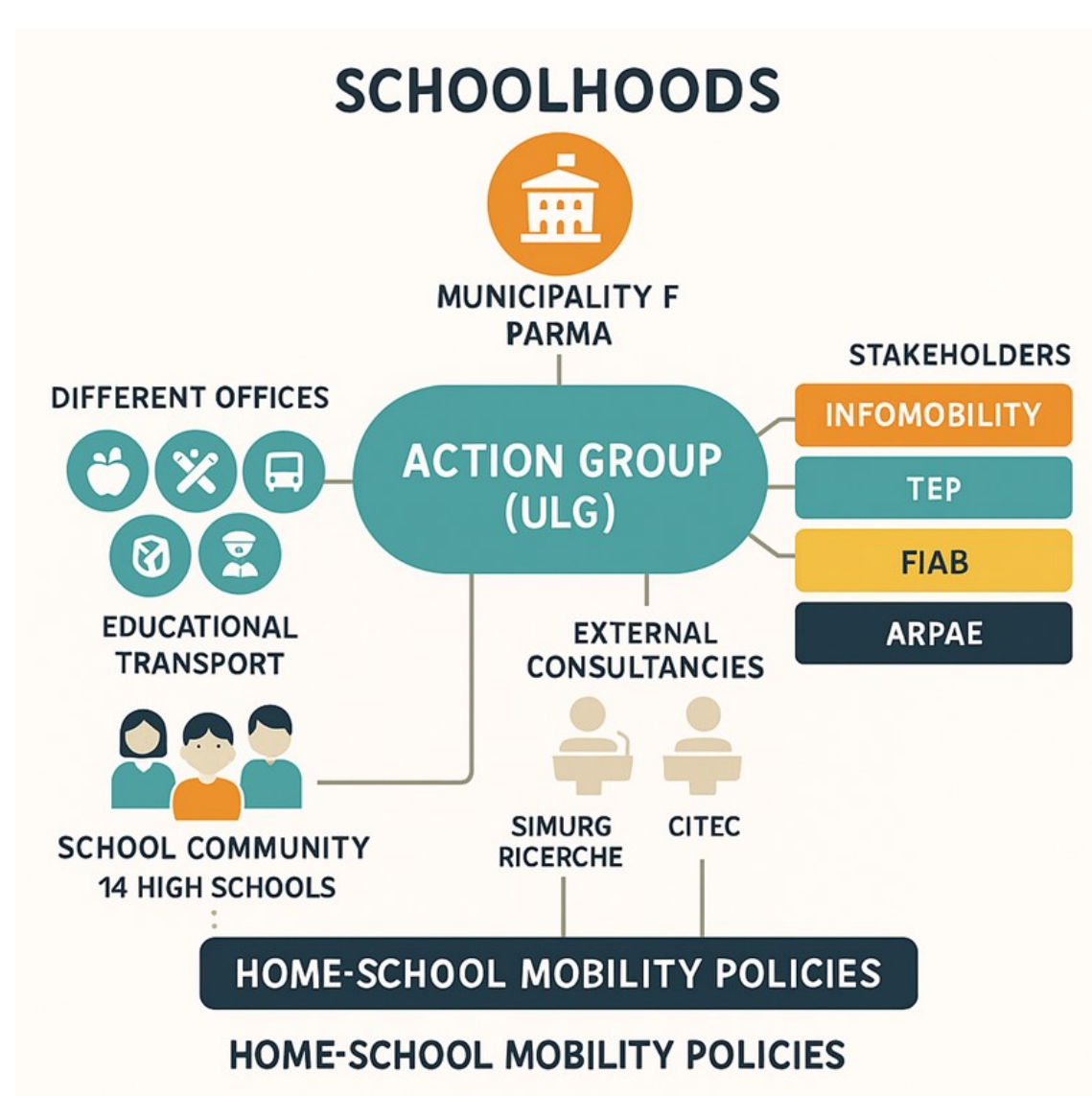
## Main Challenge and Main Goal

All pupils go to school at the same time adding many vehicles to traffic since though not the majority, many come to school by private car



To increase the proportion and number of high-school students commuting to and from school by sustainable and safe modes instead of private car use

## About the planning process



ULG work used location-wise workshops to collect schools' needs and to refine ideas on actions. These workshops took place at all 5 school areas involving 14 schools in plenary sessions and virtual tables by school area. Participants were schools' representatives, municipal staff (Mobility Manager, Schoolhoods Lead, Municipal Police), the local transport company, the municipal sustainable mobility service (Infomobility), and the cycling associations.



## Highlights of the Integrated Action Plan

### Categorising needs per school

School Area	Needs	Infrastructure	Services	Education	Governance
Viale Maria Luigia area	Greater frequency of PT and better coordination between the operator and the schools		✓		✓
	Improved pedestrian accessibility regarding crosswalks	✓			
	Renovation and pedestrianization of Piazzale Rondani	✓			
	Increase in pedestrian space through the installation of parklets on Viale Maria Luigia	✓			
Via Toscana area	Enhanced safety by extending the hours of traffic restrictions	✓			✓
	Greater frequency of PT and better coordination between the operator and the schools		✓		✓
	Promote bicycle use through education and the implementation of bike parking infrastructure	✓		✓	
Viale Piacenza area	Improve pedestrian safety on sidewalks	✓			
	Expand the area and hours of traffic restrictions, including Piazza Sicilia	✓			
	Improve pedestrian circulation at crossings by implementing push-button pedestrian traffic lights	✓			
	Enhance user safety at bus stops	✓	✓		
Liceo P. le S. Sepolcro	Increase student safety by closing Via Trombara to traffic	✓			✓
	Reduce vehicle speed by modifying the geometry of the roundabout	✓			
	Improve public space through pavement restoration in the schoolyard	✓			
Liceo Via Toschi	Increase student safety by closing Piazzale San Sepolcro to traffic	✓			
	Raise awareness of active mobility among students			✓	
	Improve bicycle mobility by enhancing the bike lane geometry where it intersects with the school exit	✓			
Convitto Nazionale Maria Luigia	Greater frequency of PT and better coordination between the operator and the schools		✓		✓
	Greater frequency of PT and better coordination between the operator and the schools		✓		✓
	Raise awareness of active mobility among students			✓	

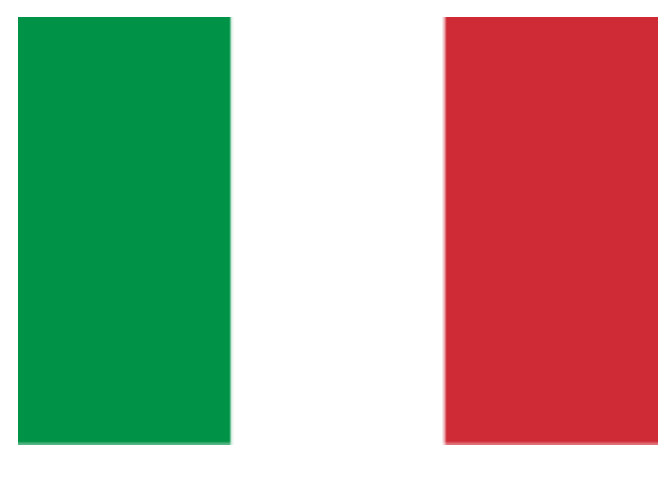
### Answering needs with actions

School area	Actions	Infrastructure	Services	Education	Governance	Feasibility
1. Actions relating to all schools	1.1 Consultation by school areas and overall, with TEP and SMTP regarding Public Transport travel timetables		✓		✓	S
	1.2 Training course for School Mobility Managers or Mobility representative for all city schools			✓	✓	S
	1.3 Review and replacement where needed of street signs for cycle paths and sidewalks/crossings nearby schools	✓				M
	1.4 Inventory of bike racks and installation of new anti-theft racks near schools in agreement with the Province of Parma	✓			✓	M
2. Viale Maria Luigia	2.1 Implementation of a new pedestrian crossing in front of Liceo Ulivi	✓				S
	2.2 New traffic lights on demand in viale Caprera	✓				M
	2.3 Remodeling of the green area in P. le Rondani	✓				M
	2.4 Implementation of 1 new parklet on Viale M. Luigia	✓				M
3. Via Toscana	3.1 Promotional campaign to encourage the use of "Velostazione" (automated facility for bike parking)	✓		✓		S
	3.2 Implementation of pedestrian crossings in via Toscana and in via Lazio near the roundabout	✓				S
	3.3 School Street widening: traffic closure of P. le Sicilia and timetable adjustments	✓				S
	4.1 Implementation of on demand traffic lights	✓				L
4. Viale Piacenza	4.2 Safety improvement of the bus stop nearby schools	✓				M
	4.3 Traffic calming and street signs interventions aimed at lowering speed at the roundabout	✓				L
	5.1 Closure of P. le San Sepolcro to traffic		✓			M
5. Liceo P. le S. Sepolcro						
6. Liceo Viale Toschi	6.1 Bike speed moderation with barriers installation	✓				M

### Mapping where actions take place

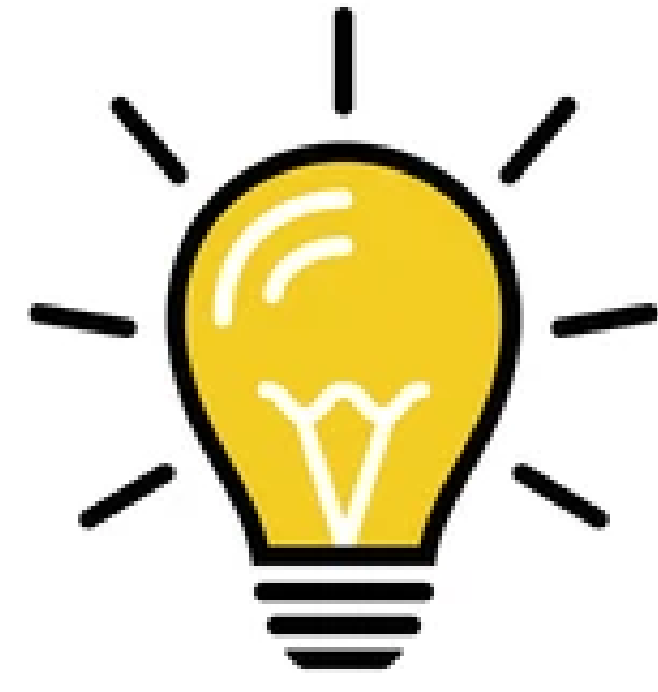




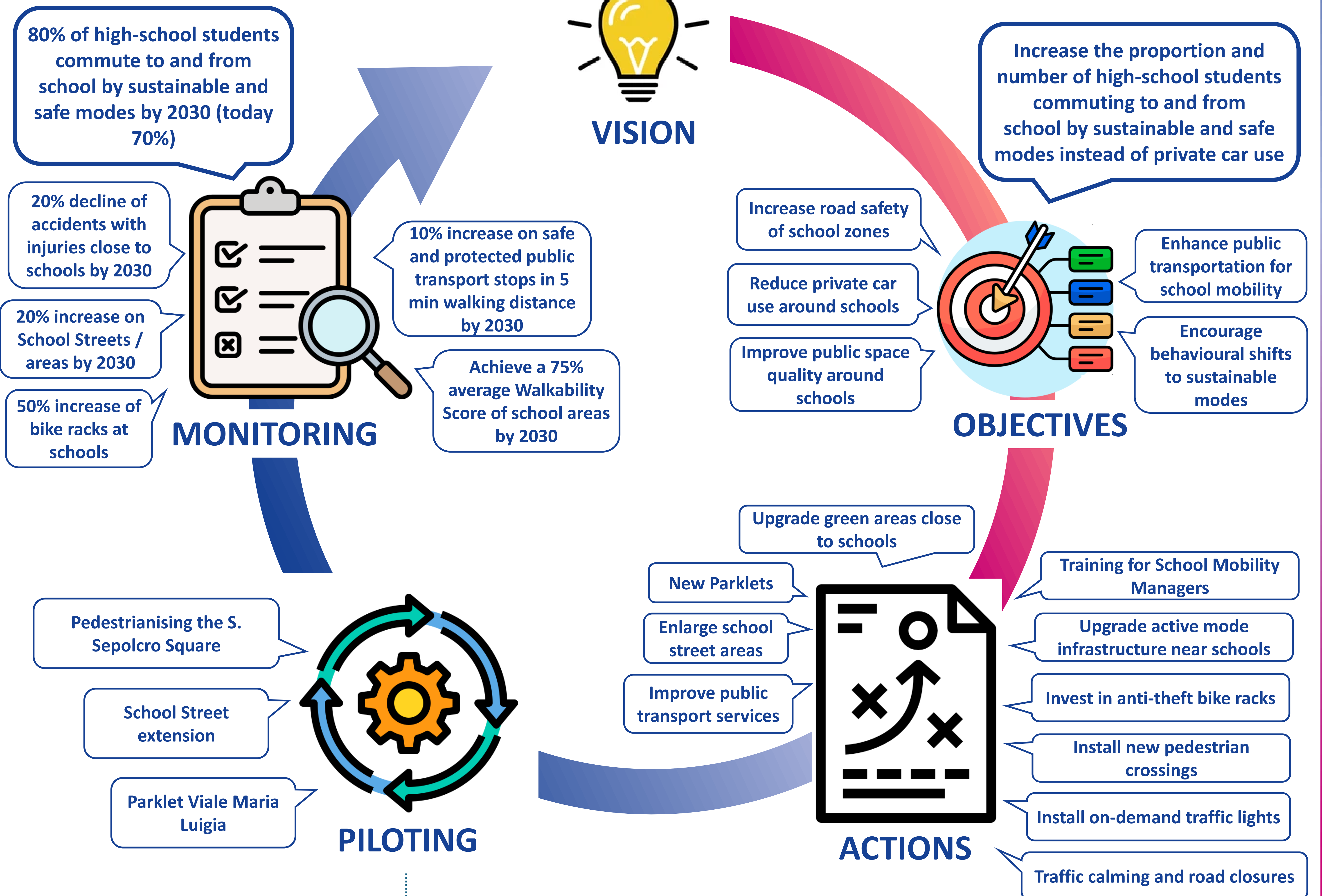


# PARMA

*Within ten years, school-related mobility will be safe, sustainable, and centred on collective well-being, with public spaces reimagined and redesigned for people—not for cars.*



## VISION

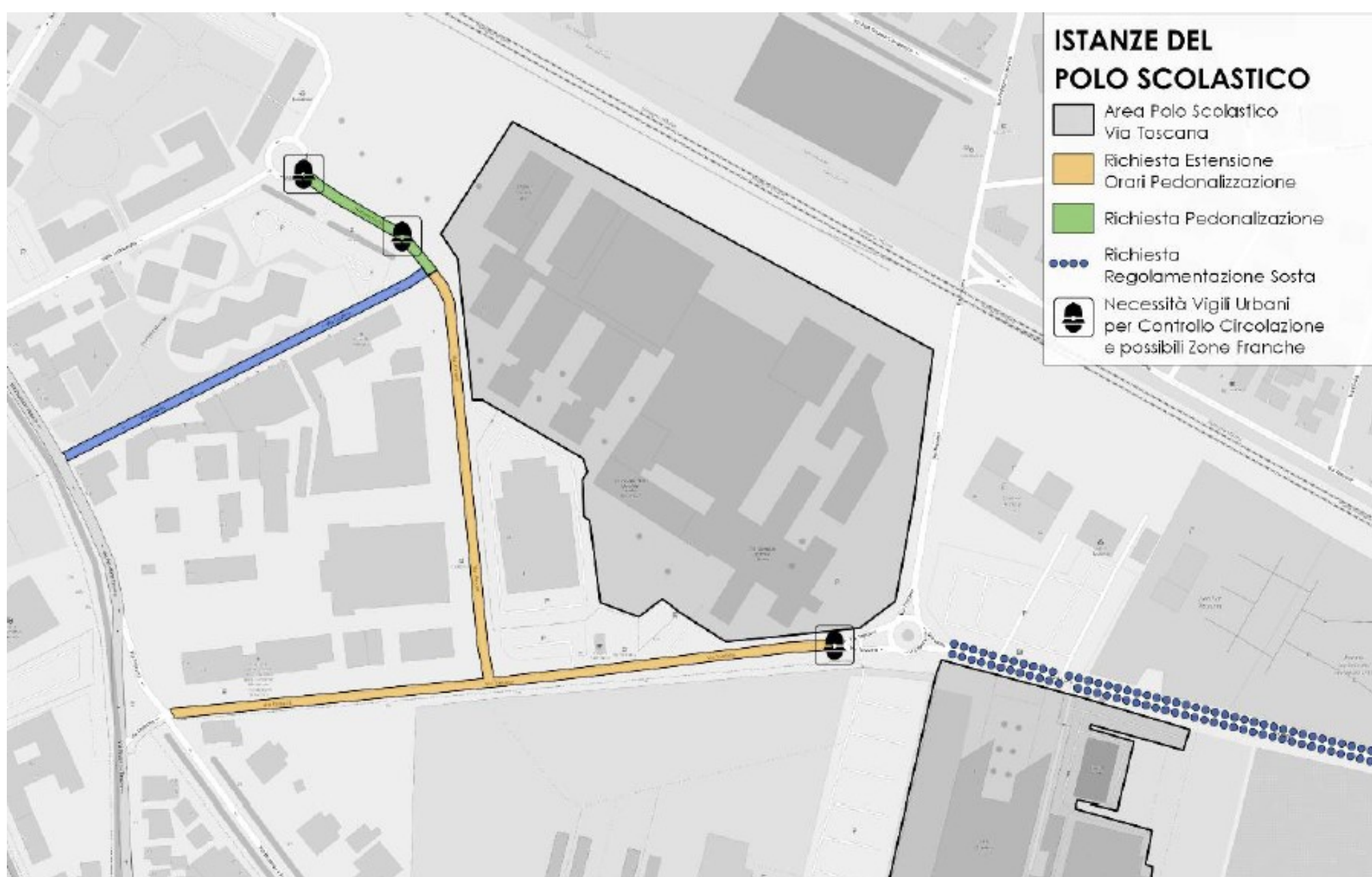


### Pedestrianisation



S. Sepolcro Square / Liceo Sanvitale

### School Street Extension



Via Abruzzi / Via Toscana

### Parklet



Viale Maria Luigia

**Schoolhoods**

**URBACT**



Co-funded by  
the European Union  
Interreg