



TURKU

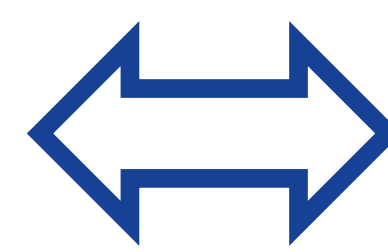
Turku in a nutshell

Country and region	Finland, South-West Finland
Population and its development	201.085 (2023), growing
Pupils' share at population	7,16 %
Size	245,7 km ² (without sea and water surface)
Density	818 / km ²
City structure	North-South extension, block structured centre
No of schools	32 administrative units (some of them divided into smaller units with separate locations, 45 units altogether), in addition 3 private schools
School choice model	Pupils go to closest school, but are also allowed to apply to another



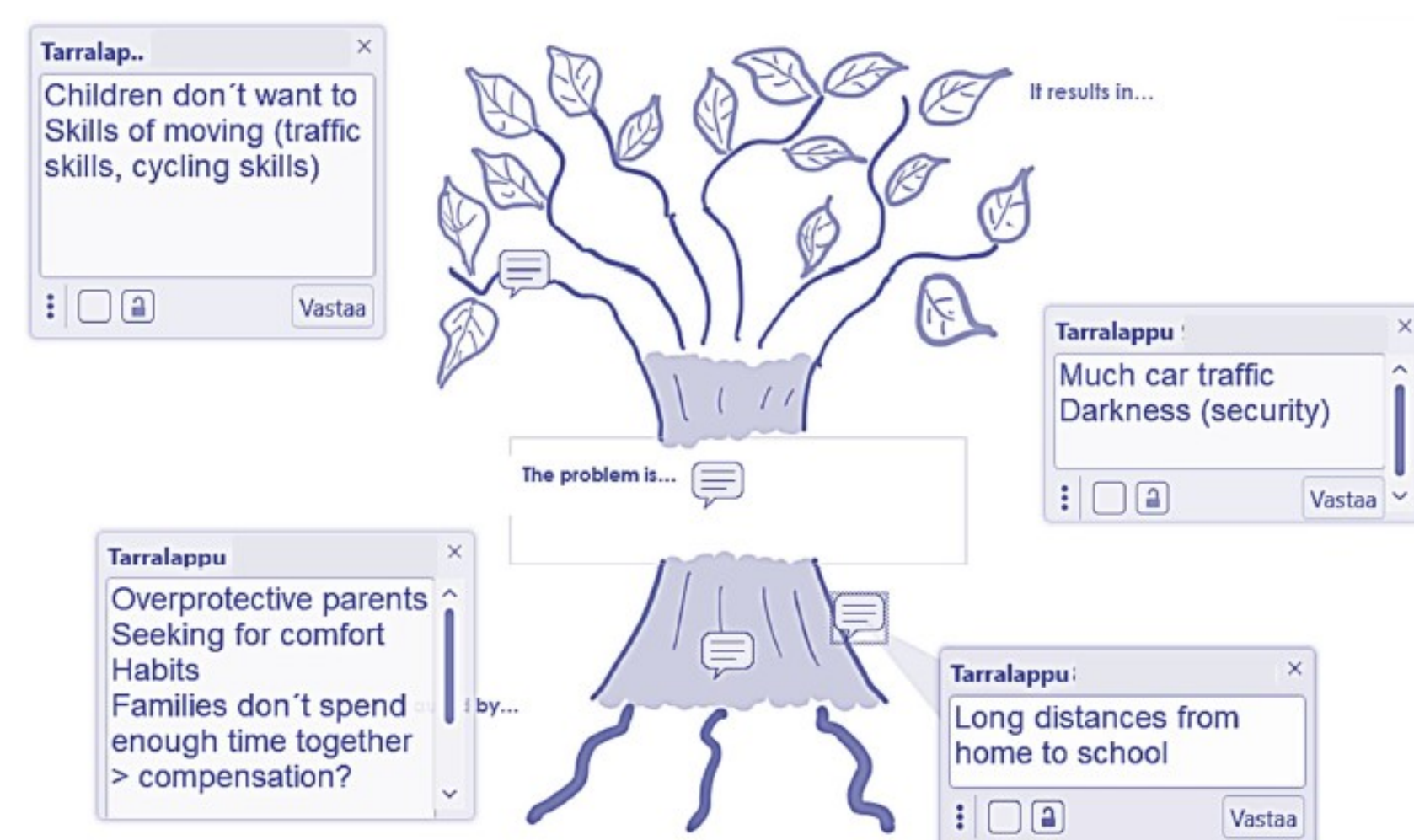
Main Challenge and Main Goal

Too few children walk or cycle to school despite largely good infrastructure and traffic conditions



Improve cycling skills and motivate children and parents to reconsider their mobility choices in favour of active mobility

About the planning process



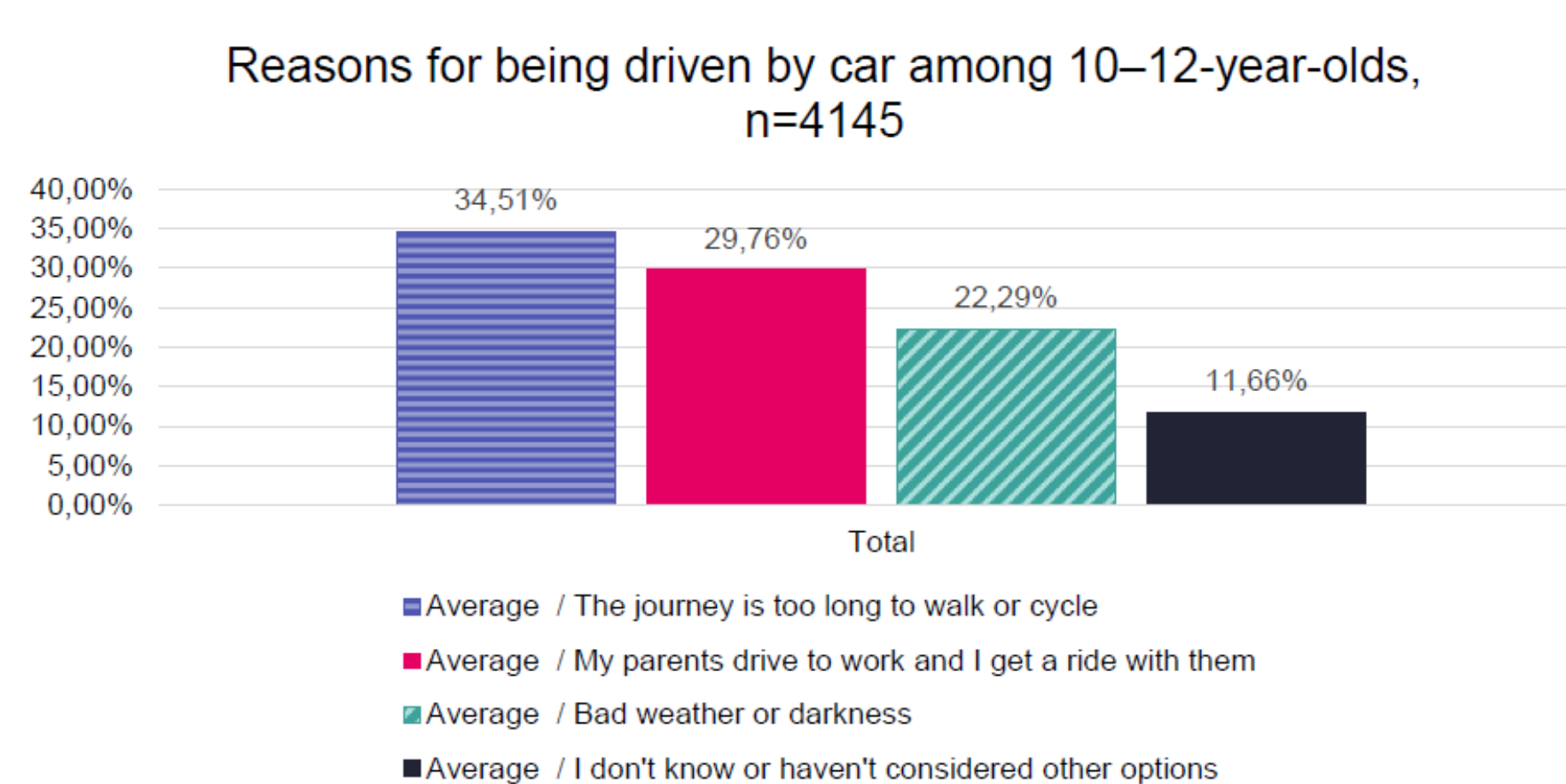
The city-wide ULG used the “Problem Tree” to identify the main problem, its effects and what is causing the problem.

Mapping exercises detailed the challenges in the pilot area in co-operation with local residents, parents and the school.

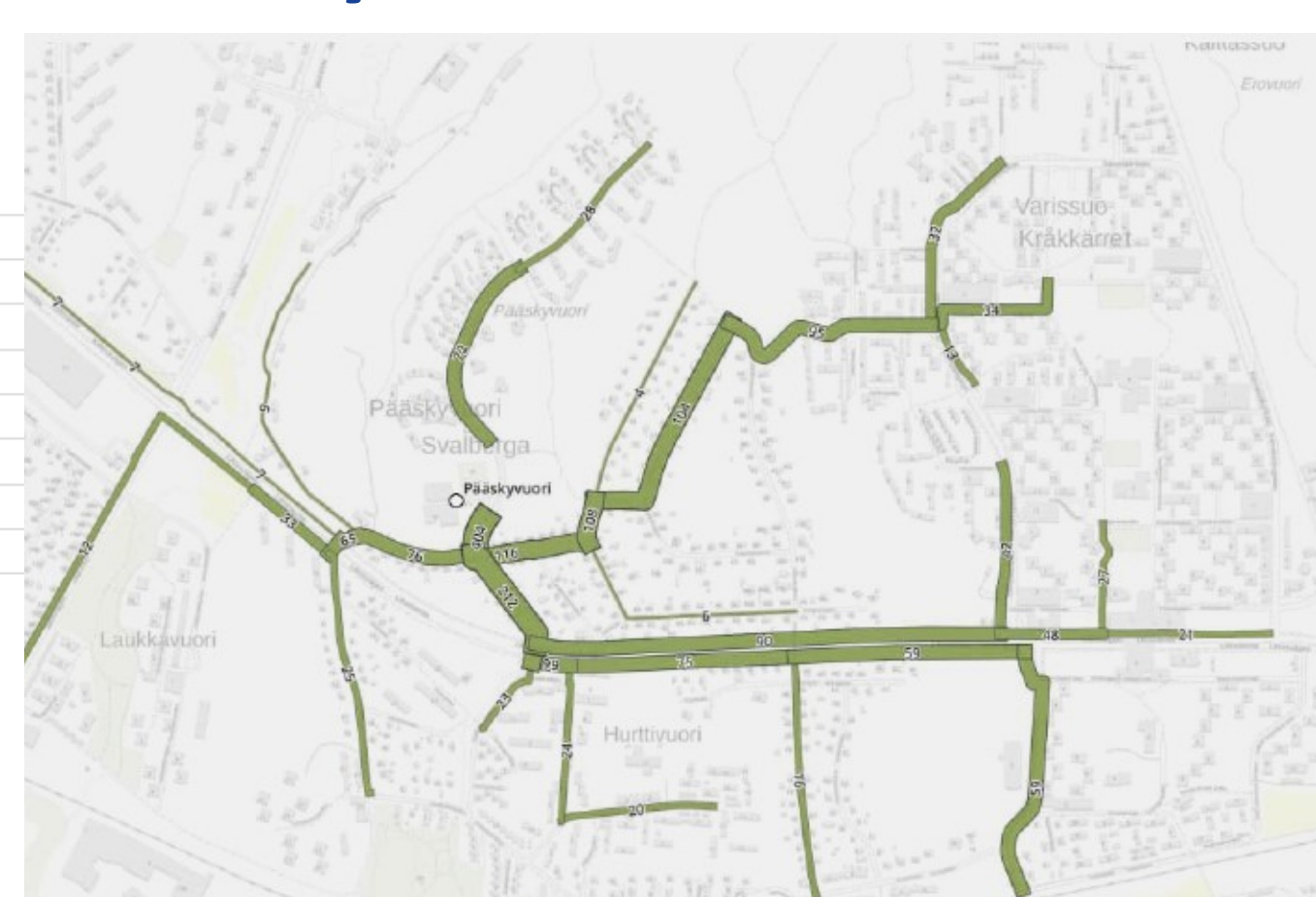


The use of data in the planning process

Understanding the challenge



Identify main school routes



Home-School Distances

	Koulumatkojen pituudet ja oppilasmäärät																Liikenne- ympäristö	Pyöräily- potentiaali	Pyöräilypotentiaali suhteellisesti	
	Oppilaita kaikkiaan	<0.5 km		<1 km		<2 km		<3 km		<4 km		<5 km		<6 km		Yli 6 km				
		lk	%	lk	%	lk	%	lk	%	lk	%	lk	%	lk	%	lk	%			
Kohmo	48	35	73%	44	52%	46	96%	46	96%	48	100%	48	100%	48	100%	48	100%	Esikaupunki Rauhainen	suuri	Eniten pieni koulu, vähän oppilaita jotka asuvat hyvin lähellä koulua. Liikennepotential turvallinen
Hannunniitti	586	95	16%	251	43%	409	70%	464	79%	499	85%	512	87%	531	91%	586	100%	Esikaupunki Haastava	keskisuuri	Iso koulu, paljon oppilaita joista osa tulee pidemmän matkan päältä. Koulun lähiympäristö erittäin rauhallinen liikennepotential edullisella kulkemalla reitillä kokonaisaika vähäinen ja pääkätien varrella
Pääskyvuori	481	50	10%	209	43%	469	98%	473	98%	475	99%	477	99%	478	99%	481	100%	Esikaupunki, Vilkas	suuri	Kokoluokassaan erittäin lyhyet koulumatkat. Liikennepotential vilkasta yläreitti kulkupäädän varrella

What has been innovative in Turku?

„Addressing a better coordination of the topic SCHOOL MOBILITY across the municipal administration units.“

„Putting a strong emphasis on skills, learning and promoting active mobility as fun activities.“

Schoolhoods

URBACT



Co-funded by
the European Union
Interreg

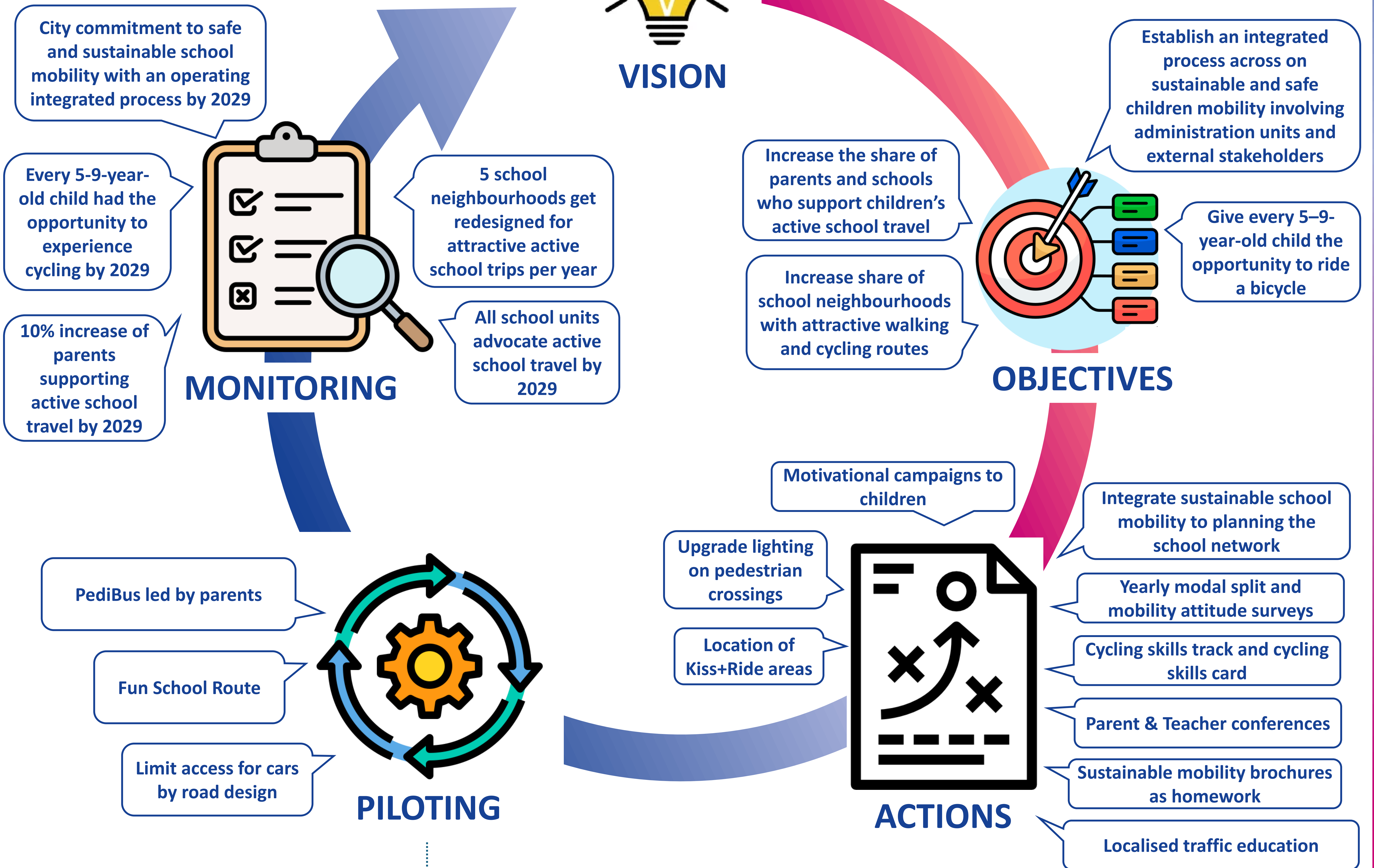


TURKU

*Every child gains knowledge, skills and motivation
for active mobility and joy of movement*



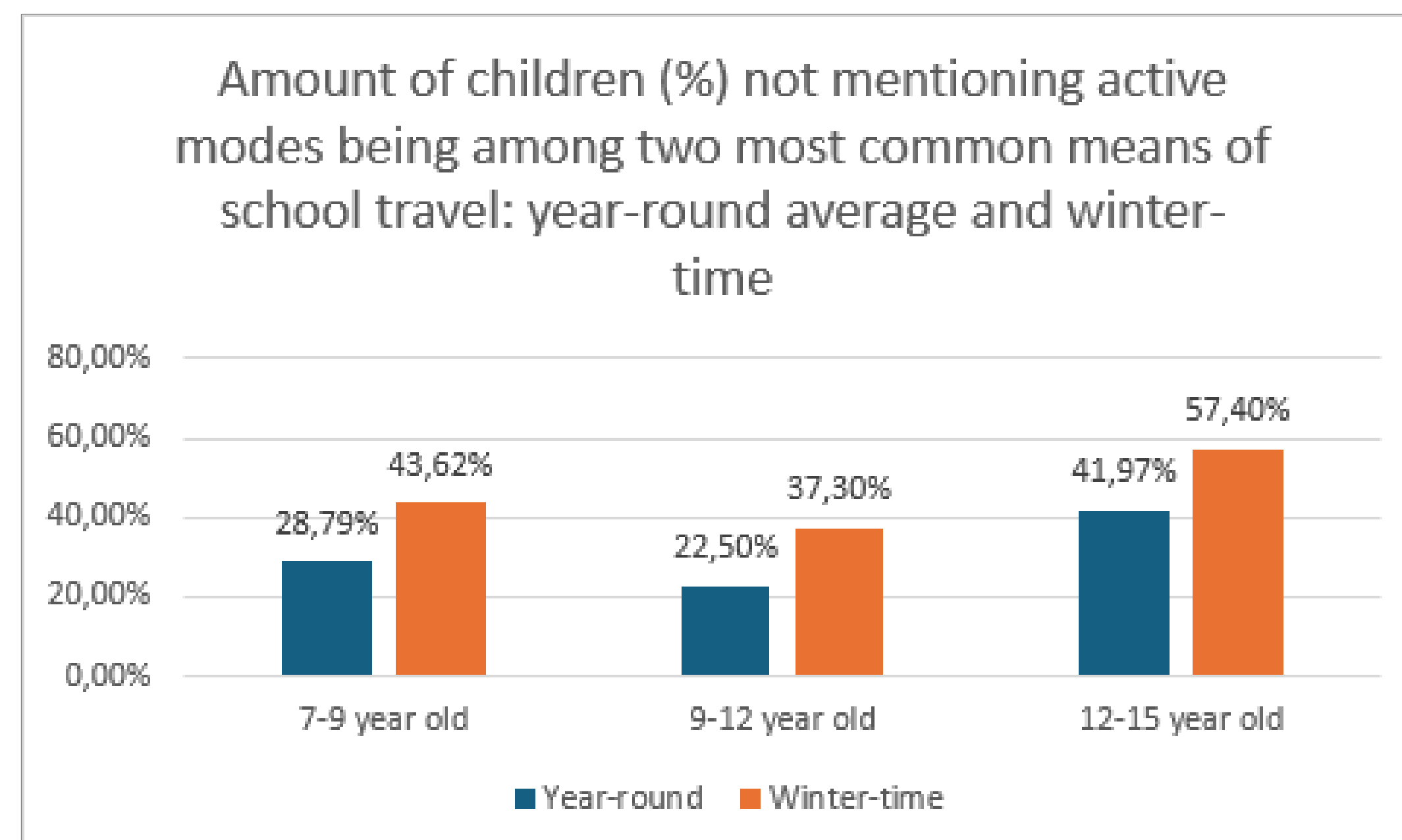
VISION



PediBus



Seasonal active mode use



Fun School Route



Limited car access



Schoolhoods

URBACT



Co-funded by
the European Union
Interreg