

Frankfurt (Oder) & Slubice

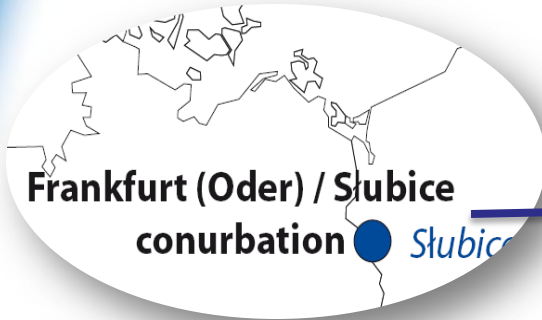
Sören BOLLMANN
Project manager

The Local Action Plans to improve project partners'
cross-border governance

« EGTC » URBACT Final conference

Esztergom, 6 May 2010

That's where we come from:

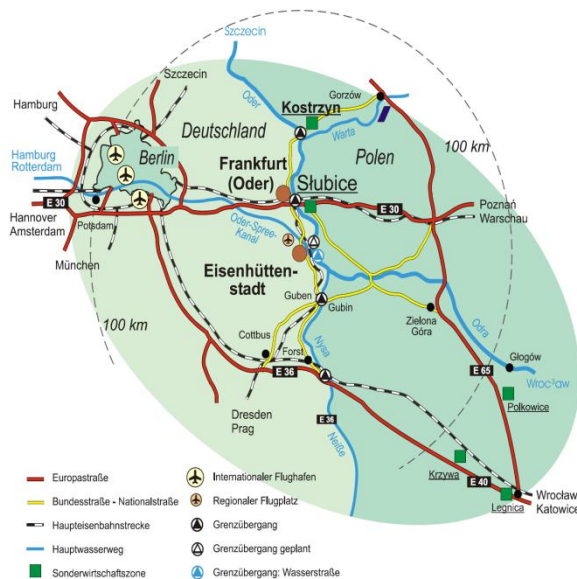


GERMANY / POLAND

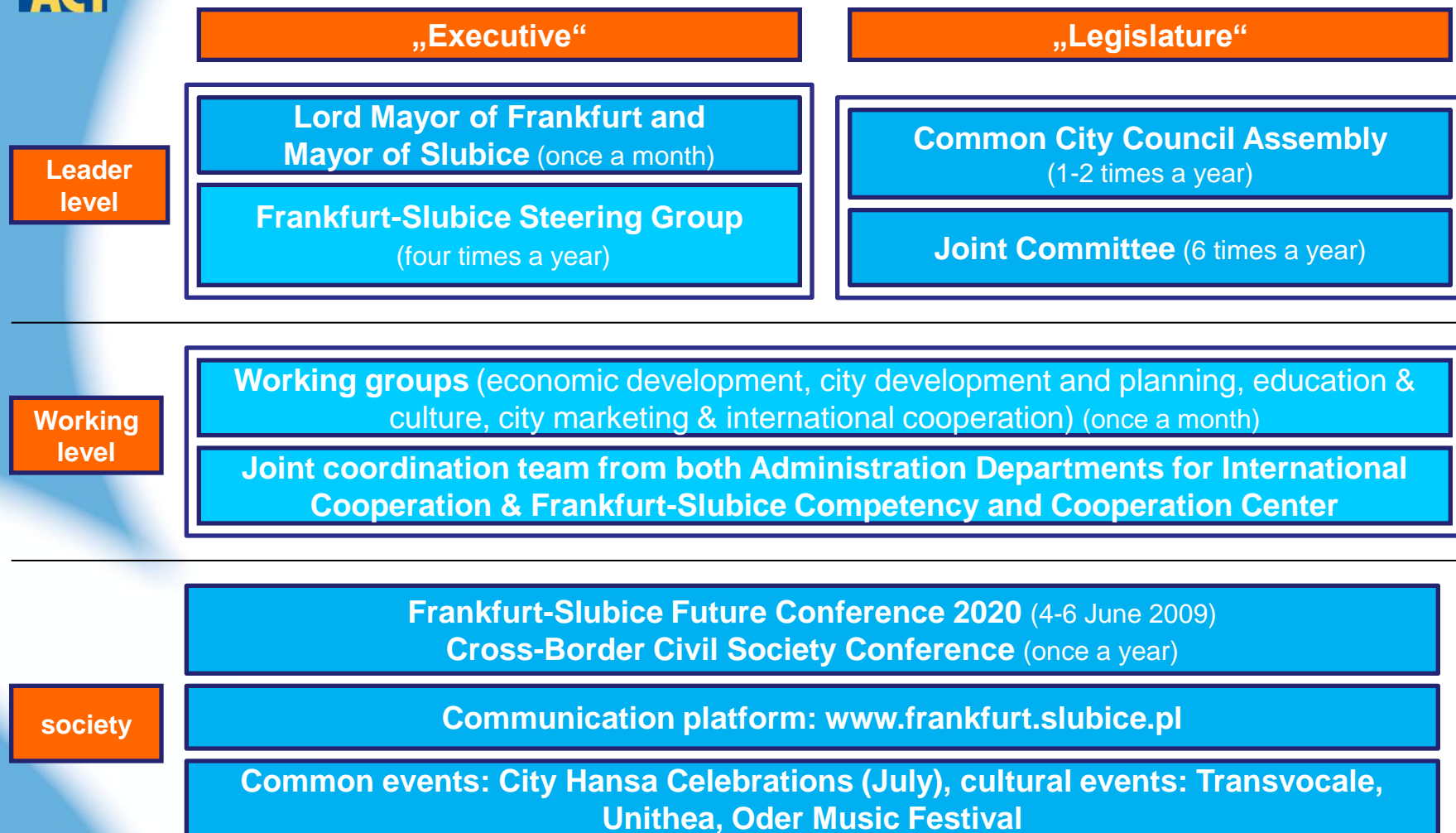


European and University Twin City

- Situated in the **geographical heart of Europe**: one hour from the German capital Berlin, about two hours from the regional capitals Poznan (600.000 inhabitants), Szczecin (400.000), Dresden (500.000) and Wroclaw (700.000)
- **Direct neighbours** on both sides of the River Oder
- Together about **80.000 inhabitants**
- **Common university** Viadrina & Collegium Polonicum with together about 7.000 students from about 80 countries



Elements from our LAP (I): Working structures of Cross Border Governance



Elements from our LAP (II): Objectives and projects

- **24 main strategic goals for 2010-2020** in seven fields of development, f.e.:

- 1.2. *Turning towards River Oder: Revitalisation and development of areas located near the river as common centre of both cities*
- 2.2. *After primary school children are able to communicate with peers from the neighbour city in their language*
- 4.1. *Drafting and implementation of a joint city and location marketing strategy*

- **14 projects for 2010-2013**, f.e.:

- 1.1.1. *Frankfurt-Slubice Integrated Urban Development Plan 2010-2020 (01.06.2010-31.05.2011)*
- 2.1.2. *Construction of a Polish-German integrative kindergarten in Slubice and extension of the Euro-Kindergarten in Frankfurt (2010-2012)*
- 4.2.2. *Network for new small and middle sized company settlement (2010-2012)*

Good practices from others to be adapted to our territory

- **Advisory council** with the biggest local companies
(practised in Eurometropole Lille-Kortrijk-Tournai)

- Involving regional levels, neighbouring counties and the
national level into our **CB governance structures**
(practised in Eurometropole Lille-Kortrijk-Tournai and
Eurodistrict Strasbourg-Ortenau)

How the project answered to our expectations

Our expectations have become more than fulfilled:

- Learning from others
- Reinforcement of our local **CB team building** process
- Further development of **CB working structures**
- Much higher public and political **attention**
- We have got a practical guide for **CB strategic planning**

- **Political acceptance:**

29.04.2010 positive decision about Local Action Plan 2010-2020 and Frankfurt-Slubice Competency and Communication Center

Perspectives

- Establishing **Frankfurt-Slubice Competency and Communication Center** (immediately)
- Realizing the **Local Action Plan** (from now on until 2020)
 - Reinforcing **public dialogue** about CB issues (Open Conference 2010)
- **Building an EGTC** within the framework of Euroregion Pro Europa Viadrina (2010-2011)

Welcome to European and University Twin City Frankfurt (Oder) & Slubice !



Thank you for your attention !